

PARTS CATALOGUE



BNC2

T155-A (BSM2) MALAYSIA

T155-A
PARTS CATALOGUE
©2024 by Yamaha Motor Co., Ltd.
1st edition, September 2024
All rights reserved.
Any reprinting or unauthorized use
without the written permission of
Yamaha Motor Co., Ltd.
is expressly prohibited.
Printed in Japan.

FOREWORD

This Parts Catalogue is related to the parts for the model(s) on the cover page. When you are ordering replacement parts, please refer to this Parts Catalogue and quote both part numbers and part names correctly.

1. Modifications or additions which have been made after the issue of the Parts Catalogue will be announced in the Parts News.
It is advisable that you make the necessary corrections to the Parts Catalogue according to the Parts News.

2. Abbreviations

The following abbreviations are used in this Parts Catalogue.

“UR” Use specified parts number.

“UN” Use as many as needed.

“AP” Alternate Parts

“LM” Locally Made (Parts need to be ordered locally)

“F#” Frame No. (Applicable machine No.)

“O/S” Over Size

3. The number of components for assembly

- Parts, which are to be supplied in an assembly, are listed with a dot (.) in front of the part name as shown below.
- The numeral appearing to the right of each component part indicates the quantity of parts for each assembly unit.

PART NO.	DESCRIPTION	Q'TY	REMARKS
2F5-83310-60	FRONT FLASHER LIGHT ASSY	2	
115-83311-60	.BULB (6V-18W)	1	

4. Applicable colours of graphics are represented in the “REMARKS” as shown below.

PART NO.	DESCRIPTION	Q'TY	REMARKS
2N4-24110-00-X5	FUEL TANK COMP.	2	MXR
3J1-24240-10	.GRAPHIC, FUEL TANK	1	FOR MXR

5. Note that the illustrations for reference in finding parts numbers are not to be used for assembling. When assembling, please use the applicable service manual.

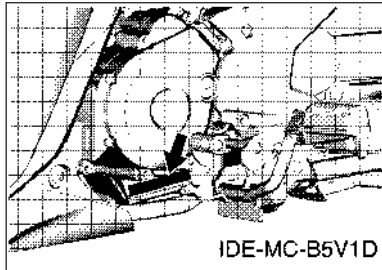
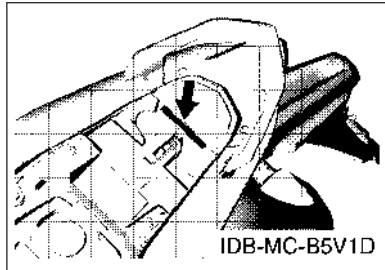
6. The asterisk (*) before a reference number indicates modified items after the first edition.

FOREWORD

7. Applicable Serial No.

Frame Serial No.

Engine Serial No.



8. Applicable Colour Code (The (*) mark shows Model colour.)

Abbreviation	Colour Name	Colour Code
BNC2(*)	BLUISH GRAY COCKTAIL 2	1862
CS6	CYAN SOLID 6	1754
MBL2	MAT BLACK 2	0582
VLGC1	VIVID LEAF GREEN CANDY 1	1573
YB	YAMAHA BLACK	0033

9. Applicable Starting Serial No.

Frame Serial No.

Serial No.	Name Of Q'ty Column	Model Code

Engine Serial No.

Serial No.	Name Of Q'ty Column	Model Code

CONTENTS

ENGINE

CYLINDER HEAD.....	1
CRANKSHAFT & PISTON.....	3
VALVE.....	4
CAMSHAFT & CHAIN.....	5
WATER PUMP.....	6
RADIATOR & HOSE.....	7
OIL PUMP.....	8
INTAKE.....	9
EXHAUST.....	11
CRANKCASE.....	12
CRANKCASE COVER 1.....	13
STARTER CLUTCH.....	14
CLUTCH.....	15
TRANSMISSION.....	17
SHIFT CAM & FORK.....	18
SHIFT SHAFT.....	19

CHASSIS

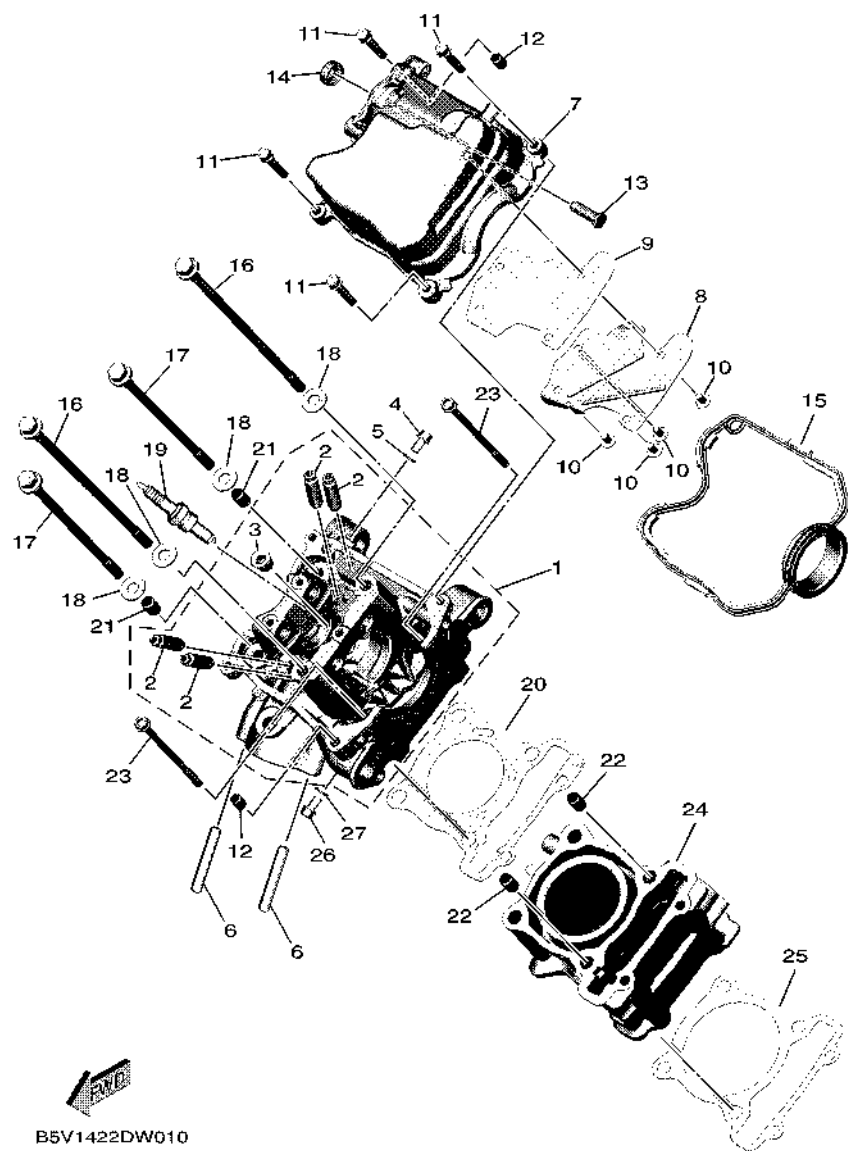
FRAME.....	20
FENDER.....	21
SIDE COVER.....	22
REAR ARM & SUSPENSION.....	24
STEERING.....	25
FRONT FORK.....	26
FUEL TANK.....	28
SEAT.....	29
FRONT WHEEL.....	30
FRONT BRAKE CALIPER.....	31
REAR WHEEL.....	32
REAR BRAKE CALIPER.....	33
STEERING HANDLE & CABLE.....	34
FRONT MASTER CYLINDER.....	36
STAND & FOOTREST.....	37
REAR MASTER CYLINDER.....	39
LEG SHIELD.....	41
GENERATOR.....	44
STARTING MOTOR.....	45
FLASHER LIGHT.....	46
METER.....	47

HEADLIGHT.....	48
TAILLIGHT.....	49
HANDLE SWITCH & LEVER.....	50
ELECTRICAL 1.....	51
ELECTRICAL 2.....	53
ELECTRICAL 3.....	55

INDEX

NUMERICAL INDEX.....	56
----------------------	----

FIG. 1 CYLINDER HEAD



B5V1422DW010

REF. NO.	PART NO.	DESCRIPTION	BSM2				REMARKS
1	BAX-E1102-02	CYLINDER HEAD ASSY	1				
2	B63-E1133-10	.GUIDE, VALVE 1	4				
3	90340-12813	.PLUG, STRAIGHT SCREW	1				
4	95E32-06010	BOLT, FLANGE DEEP RECESS	1				
5	90430-06803	GASKET	1				
6	95612-08635	BOLT, STUD	2				
7	B5V-E1191-00	COVER, CYLINDER HEAD 1	1				
8	B5V-E1165-00	PLATE, BREATHER	1				
9	B5V-E1169-00	GASKET, BREATHER COVER	1				
10	90149-05801	SCREW	4				
11	95E32-06030	BOLT, FLANGE DEEP RECESS	4				
12	99530-08012	PIN, DOWEL	2				
13	BAX-E132G-00	ROD 1	1				UR
	B5V-E132G-00	ROD 1	1				UR
14	93102-08800	OIL SEAL	1				
15	B3F-E1193-00	GASKET, HEAD COVER 1	1				
16	90105-088J0	BOLT, FLANGE	2				
17	90105-088H9	BOLT, FLANGE	2				
18	90201-08859	WASHER, PLATE	4				
19	94700-00884	PLUG, SPARK (NGK CPR8EA)	1				
20	2DP-E1181-00	GASKET, CYLINDER HEAD 1	1				
21	91810-14808	PIN, DOWEL	2				
22	91810-14808	PIN, DOWEL	2				
23	90110-06894	BOLT, HEXAGON SOCKET HEAD	2				
24	B5V-E1311-00	CYLINDER 1	1				
25	B0T-E1351-00	GASKET, CYLINDER	1				
26	95E32-06010	BOLT, FLANGE DEEP RECESS	1				

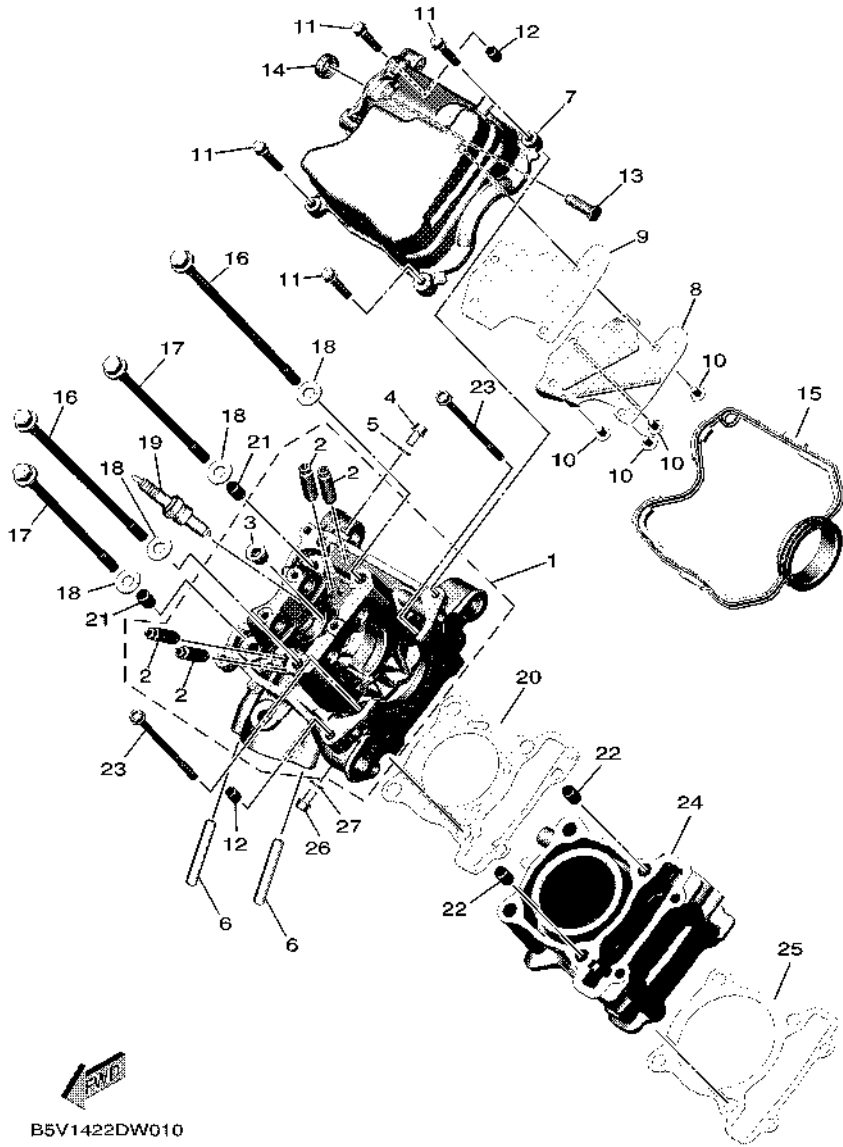
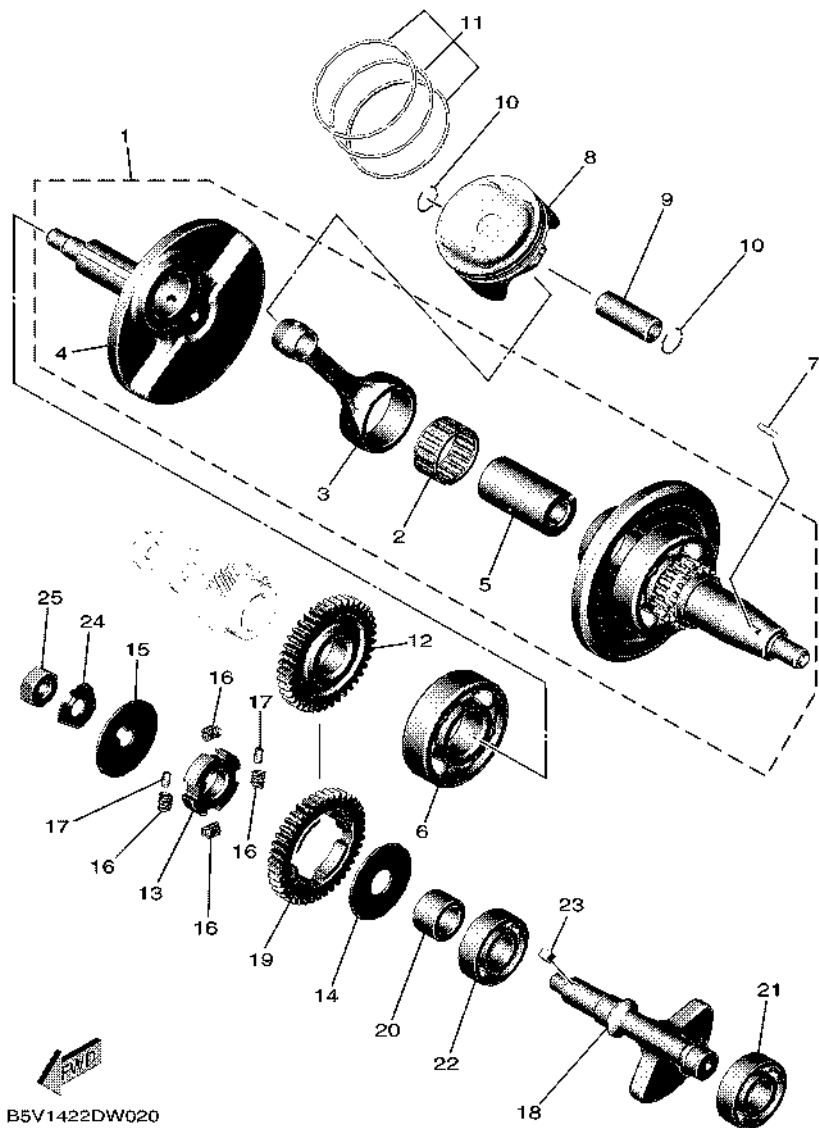


FIG. 1 CYLINDER HEAD

REF. NO.	PART NO.	DESCRIPTION	BSM2				REMARKS
27	90430-06803	GASKET	1				

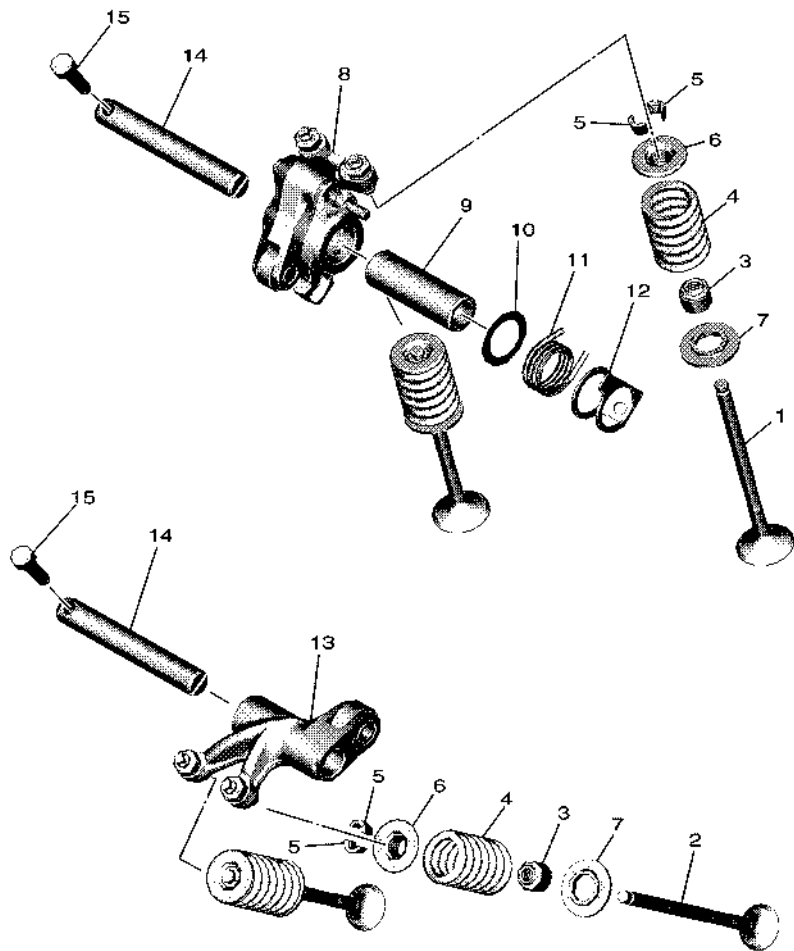


B5V1422DW020

FIG. 2 CRANKSHAFT & PISTON

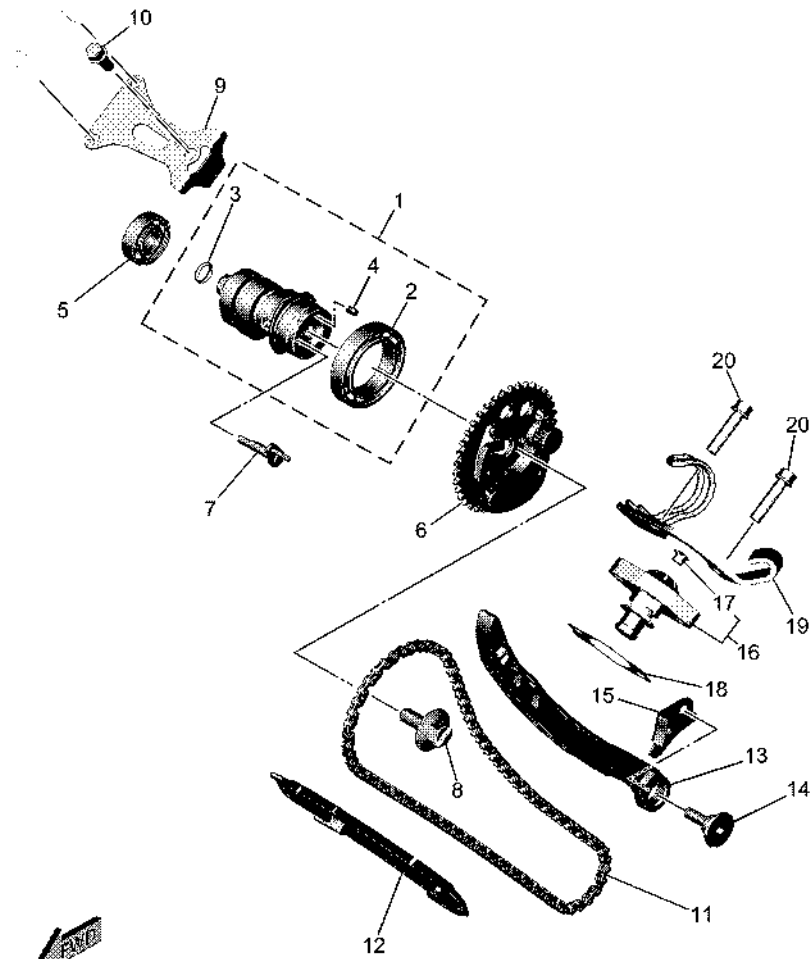
REF. NO.	PART NO.	DESCRIPTION	BSM2				REMARKS
1	B5V-WE140-00	CRANKSHAFT ASSY	1				UR
	BAX-WE140-10	CRANKSHAFT ASSY	1				UR
2	93310-526YT	.BEARING	1				
3	B5V-E1651-00	.ROD, CONNECTING	1				
4	B5V-E1422-00	.CRANK 2	1				FOR B5V-WE140-00
	BAX-E1422-00	.CRANK 2	1				FOR BAX-WE140-10
5	BK6-E1681-00	.PIN, CRANK 1	1				
6	93306-355Y8	BEARING	1				
7	90280-03017	KEY, WOODRUFF	1				
8	B5V-E1631-00	PISTON (STD)	1				
9	5YP-E1633-00	PIN, PISTON	1				
10	93450-15175	CIRCLIP	2				
11	B5V-E1603-00	PISTON RING SET (STD)	1				
12	2ND-E1536-00	GEAR, DRIVE	1				
13	2ND-E1496-00	BOSS, BUFFER	1				
14	90201-15821	WASHER, PLATE	1				
15	90214-10800	WASHER, CLAW	1				
16	90501-16800	SPRING, COMPRESSION	4				
17	93604-08071	PIN, DOWEL	2				
18	BAX-E1454-00	WEIGHT 1	1				
19	2ND-E1531-10	GEAR, BALANCE WEIGHT	1				
20	90387-15810	COLLAR	1				
21	93306-253YM	BEARING	1				
22	93306-253YM	BEARING	1				
23	90282-05031	KEY, STRAIGHT	1				
24	90215-10803	WASHER, LOCK	1				
25	90170-10012	NUT	1				

FIG. 3 VALVE




 B5V1422DW030

REF. NO.	PART NO.	DESCRIPTION	BSM2				REMARKS
1	BK6-E2111-00	VALVE, INTAKE	2				
2	B3M-E2121-00	VALVE, EXHAUST	2				
3	B63-E2119-00	SEAL, VALVE STEM	4				
4	B63-E2113-00	SPRING, VALVE INNER	4				
5	5TL-E2118-00	LOCK, VALVE SPRING RETAINER	8				
6	B63-E2117-01	RETAINER, VALVE SPRING	4				
7	55P-E2126-00	SEAT, VALVE SPRING 2	4				
8	B5V-E2150-10	VALVE ROCKER ARM ASSY	1				
9	BAX-E2166-00	SHAFT, ROCKER 3	1				UR
	B5V-E2166-10	SHAFT, ROCKER 3	1				UR
10	B5V-E1557-00	WASHER 1	1				
11	BK6-E2226-00	SPRING, COIL	1				
12	BAX-E2279-00	PLATE	1				
13	B5V-E2160-02	VALVE ROCKER ARM ASSY 2	1				
14	BAX-E2156-00	SHAFT, ROCKER 2	2				UR
	B5V-E2156-00	SHAFT, ROCKER 2	2				UR
15	91312-05016	BOLT, HEXAGON SOCKET HEAD	2				

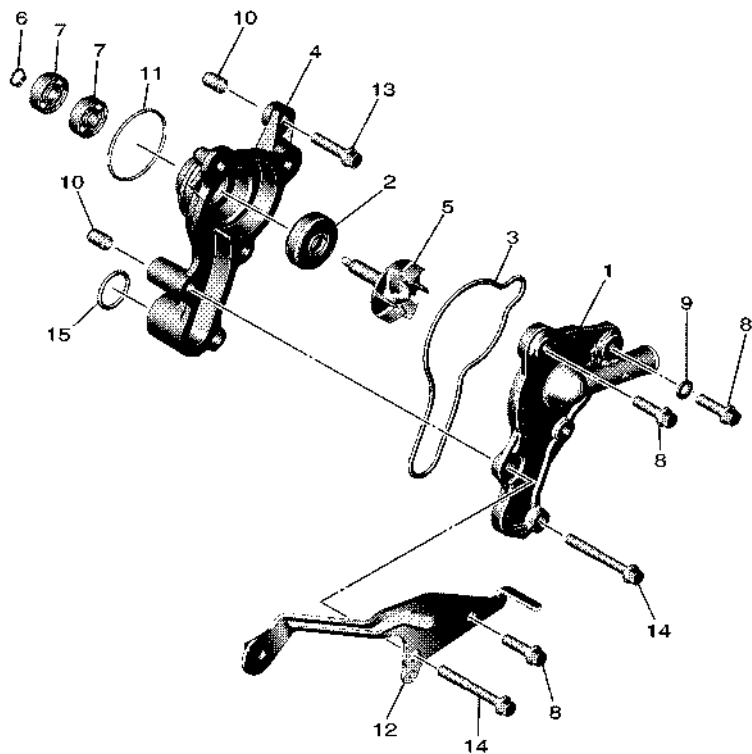


B5VJ422D0040

FIG. 4 CAMSHAFT & CHAIN

REF. NO.	PART NO.	DESCRIPTION	BSM2				REMARKS
1	BAX-E2170-10	CAMSHAFT ASSY 1	1				
2	93306-906X4	.BEARING	1				
3	93210-09806	.O-RING	1				
4	93604-06083	.PIN, DOWEL	1				
5	93306-001YL	BEARING	1				
6	BDJ-E2280-00	DECOMPRESSION ASSY	1				
7	BPN-E2288-00	CAM, DECOMPRESSION	1				
8	B63-E2157-00	BOLT	1				
9	BAX-E111F-00	PLATE	1				
10	95E32-06014	BOLT, FLANGE DEEP RECESS	1				
11	94568-J9096	CHAIN	1				
12	B63-E2231-00	GUIDE, STOPPER 1	1				
13	B5V-E2241-00	GUIDE, STOPPER 2	1				
14	1DR-E2228-00	BOLT	1				
15	BAX-E2256-00	COVER, CHAIN	1				
16	2ND-E2210-20	TENSIONER ASSY, CAM CHAIN	1				
17	5MX-E2222-00	.PLUG	1				
18	BAX-E2213-00	GASKET, TENSIONER CASE	1				
19	B5V-E5441-00	HOLDER, CLUTCH CABLE	1				
20	95E32-06025	BOLT, FLANGE DEEP RECESS	2				

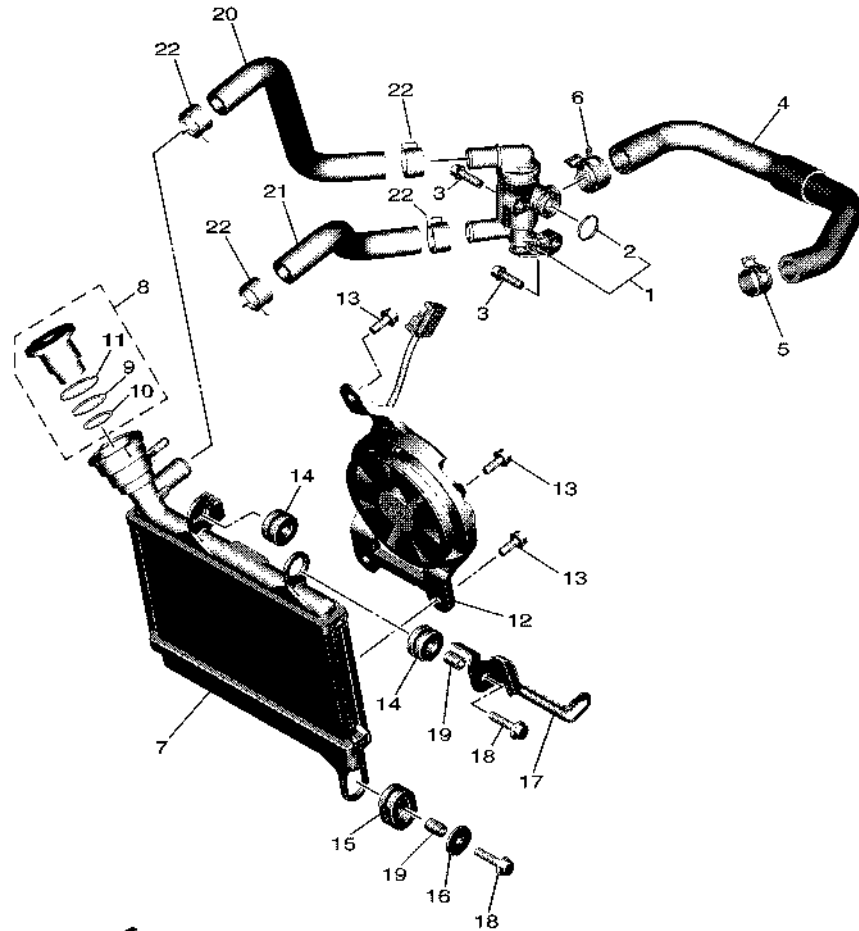
FIG. 5 WATER PUMP



 BKS2446DY050

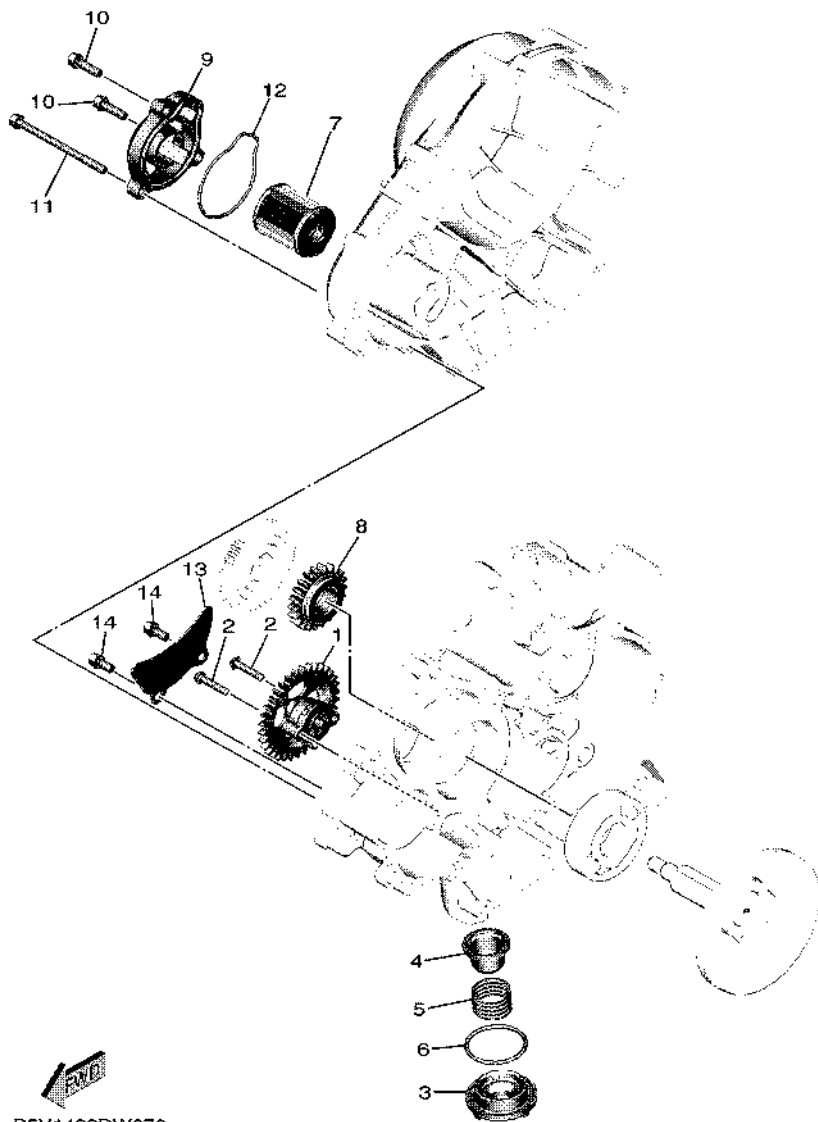
REF. NO.	PART NO.	DESCRIPTION	BSM2				REMARKS
1	B5V-E2422-00	COVER, HOUSING	1				
2	93103-08800	OIL SEAL	1				
3	B5V-E2439-00	O-RING	1				
4	B5V-E1185-00	COVER, CYLINDER HEAD SIDE 3	1				
5	B6H-E2450-00	IMPELLER SHAFT ASSY	1				
6	99009-08400	CIRCLIP	1				
7	93300-608X0	BEARING	2				
8	95027-06020	BOLT, FLANGE	3				
9	90430-06803	GASKET	1				
10	99530-08012	PIN, DOWEL	2				
11	93210-39803	O-RING	1				
12	B5V-E2443-00	STAY	1				
13	95E32-06025	BOLT, FLANGE DEEP RECESS	1				
14	95E32-06050	BOLT, FLANGE DEEP RECESS	2				
15	93210-19809	O-RING	1				

FIG. 6 RADIATOR & HOSE



B5V1422DW060

REF. NO.	PART NO.	DESCRIPTION	BSM2				REMARKS
1	BK6-E2410-00	THERMOSTAT ASSY	1				
2	52S-12439-00	.O-RING	1				
3	95E32-06020	BOLT, FLANGE DEEP RECESS	2				
4	B5V-E2483-00	PIPE 3	1				
5	90467-19803	CLIP	1				
6	90467-20806	CLIP	1				
7	B5V-E2461-00	RADIATOR COMP	1				
8	BVY-E2462-00	CAP, RADIATOR	1				
9	B65-E2439-00	.O-RING	1				
10	B65-E2843-00	.O-RING	1				
11	B63-E22A2-00	.O-RING	1				
12	B5V-E2405-00	BLOWER ASSY	1				
13	5YP-E2675-00	BOLT, BLOWER HOLDING	3				
14	90480-15808	GROMMET	2				
15	90480-01803	GROMMET	1				
16	90201-06880	WASHER, PLATE	1				
17	BSM-E244E-00	BRACKET 1	1				
18	95D32-06025	BOLT, FLANGE DEEP RECESS	2				
19	90387-06144	COLLAR	2				
20	BAX-E2481-00	PIPE 1	1				
21	BAX-E2482-00	PIPE 2	1				
22	90467-19803	CLIP	4				

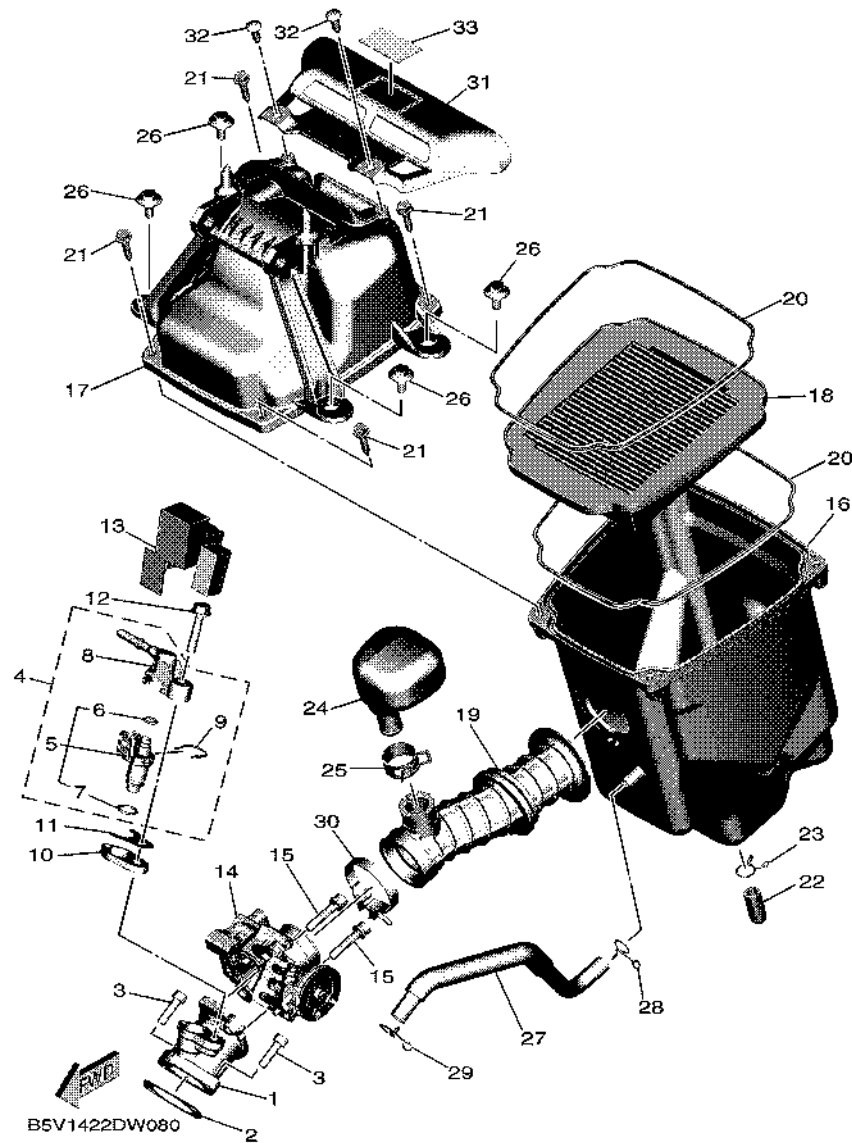


B5V1422DW070

FIG. 7 OIL PUMP

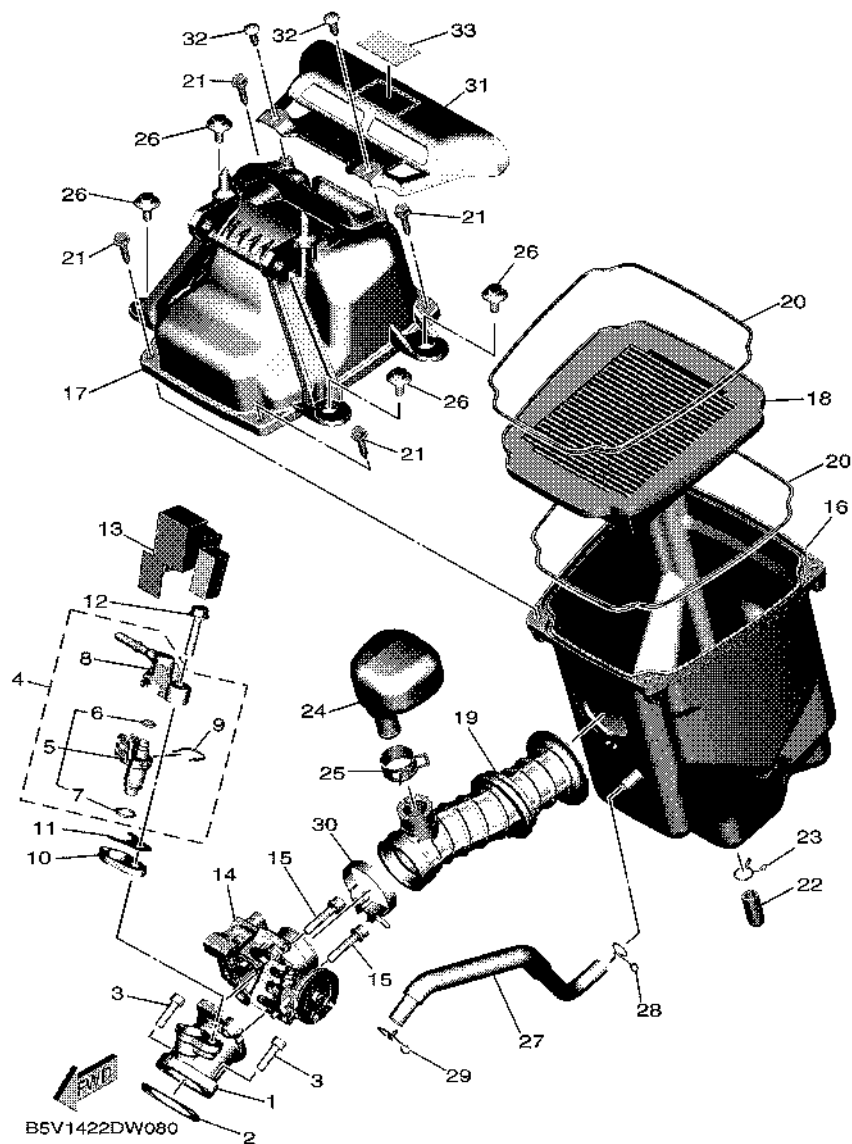
REF. NO.	PART NO.	DESCRIPTION	BSM2				REMARKS
1	2ND-E3300-01	OIL PUMP ASSY	1				
2	90111-05808	BOLT, HEXAGON SOCKET BUTTON	2				
3	1S8-E5351-00	PLUG,DRAIN 1	1				
4	38B-E3411-00	STRAINER, OIL	1				
5	90501-18576	SPRING, COMPRESSION	1				
6	93210-34804	O-RING	1				
7	38B-E3440-01	ELEMENT ASSY, OIL CLEANER	1				
8	2ND-E3324-10	GEAR, PUMP DRIVE	1				
9	55C-E3447-00	COVER, OIL ELEMENT	1				
10	95E32-06020	BOLT, FLANGE DEEP RECESS	2				
11	95E32-06080	BOLT, FLANGE DEEP RECESS	1				
12	93210-54808	O-RING	1				
13	3C1-E3327-00	COVER, PUMP GEAR	1				
14	95E32-06012	BOLT, FLANGE DEEP RECESS	2				

FIG. 8 INTAKE



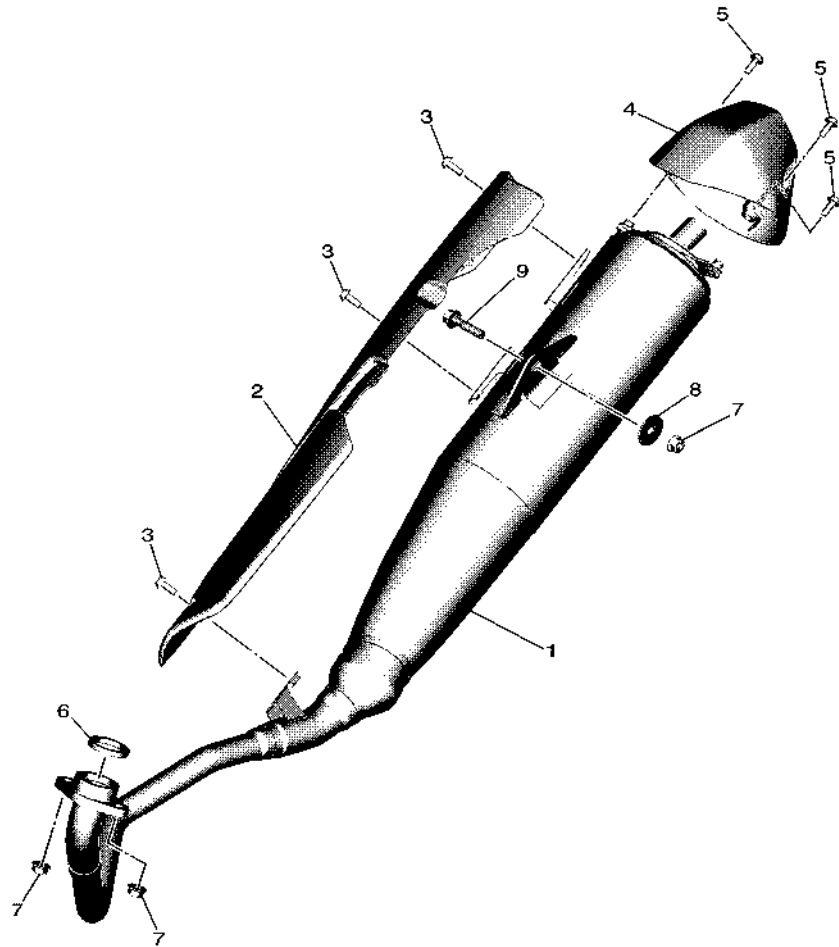
REF. NO.	PART NO.	DESCRIPTION	BSM2				REMARKS
1	BK7-E3585-00	MANIFOLD	1				
2	BAX-E4199-00	GASKET	1				
3	91312-06020	BOLT, HEXAGON SOCKET HEAD	2				
4	BK6-E3770-00	INJECTOR ASSY	1				
5	BK6-E3761-00	.INJECTOR	1				
6	54P-E4147-00	.O-RING	1				
7	5CA-E4147-00	.O-RING	1				
8	54P-E3938-00	.PIPE	1				
9	54P-E4137-00	.CLIP	1				
10	2FB-E3556-00	GASKET, MANIFOLD	1				
11	BAX-E3557-00	GASKET	1				
12	95812-06030	BOLT, FLANGE	1				
13	2ND-E3767-10	CAP, INJECTOR	1				
14	B5V-E3750-00	THROTTLE BODY ASSY	1				
15	90110-06846	BOLT, HEXAGON SOCKET HEAD	2				
16	B5V-E4411-00	CASE, AIR CLEANER 1	1				
17	B5V-E4412-00	CAP, CLEANER CASE 1	1				
18	B5V-E4450-00	ELEMENT ASSY, AIR CLEANER	1				
19	B5V-E4453-00	JOINT, AIR CLEANER 1	1				
20	2ND-E4452-00	SEAL	2				
21	90163-05803	SCREW, TAPPING	4				
22	5WP-E443E-00	PIPE, DRAIN	1				
23	90467-11019	CLIP	1				
24	B5V-E4877-00	RESONATOR	1				
25	90467-22802	CLIP	1				
26	90109-06322	BOLT	4				
27	B5V-E1166-00	PIPE, BREATHER 1	1				

FIG. 8 INTAKE



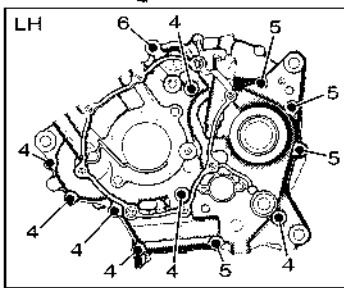
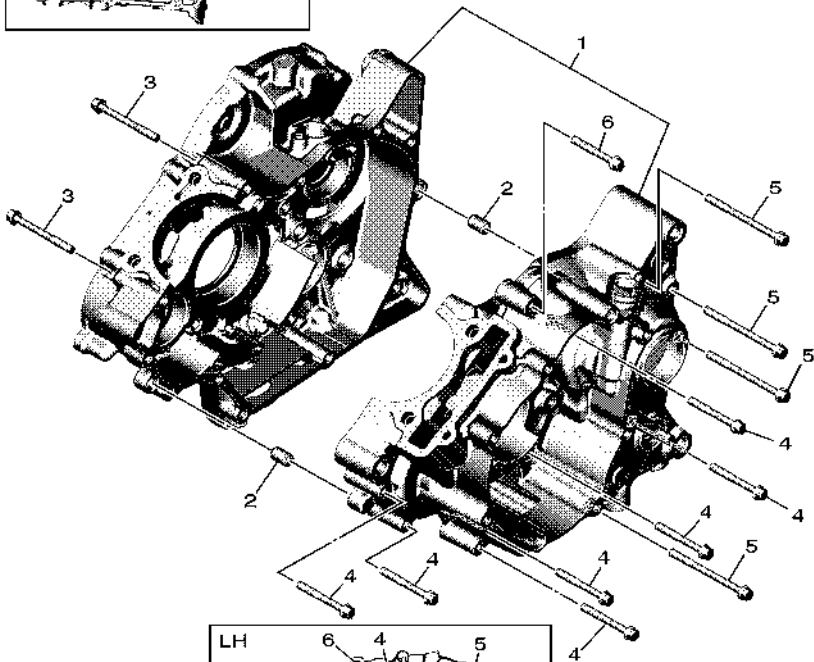
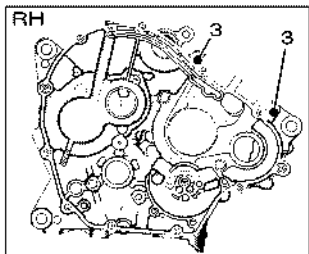
REF. NO.	PART NO.	DESCRIPTION	BSM2				REMARKS
28	90467-11825	CLIP	1				
29	90467-12052	CLIP	1				
30	90450-43805	HOSE CLAMP ASSY	1				
31	B5V-E4417-00	COVER 1	1				
32	90160-05012	SCREW, ROUND TAPPING	2				
33	55C-F815P-00	LABEL, NOTICE 1	1				

FIG. 9 EXHAUST



B5V1422DW090

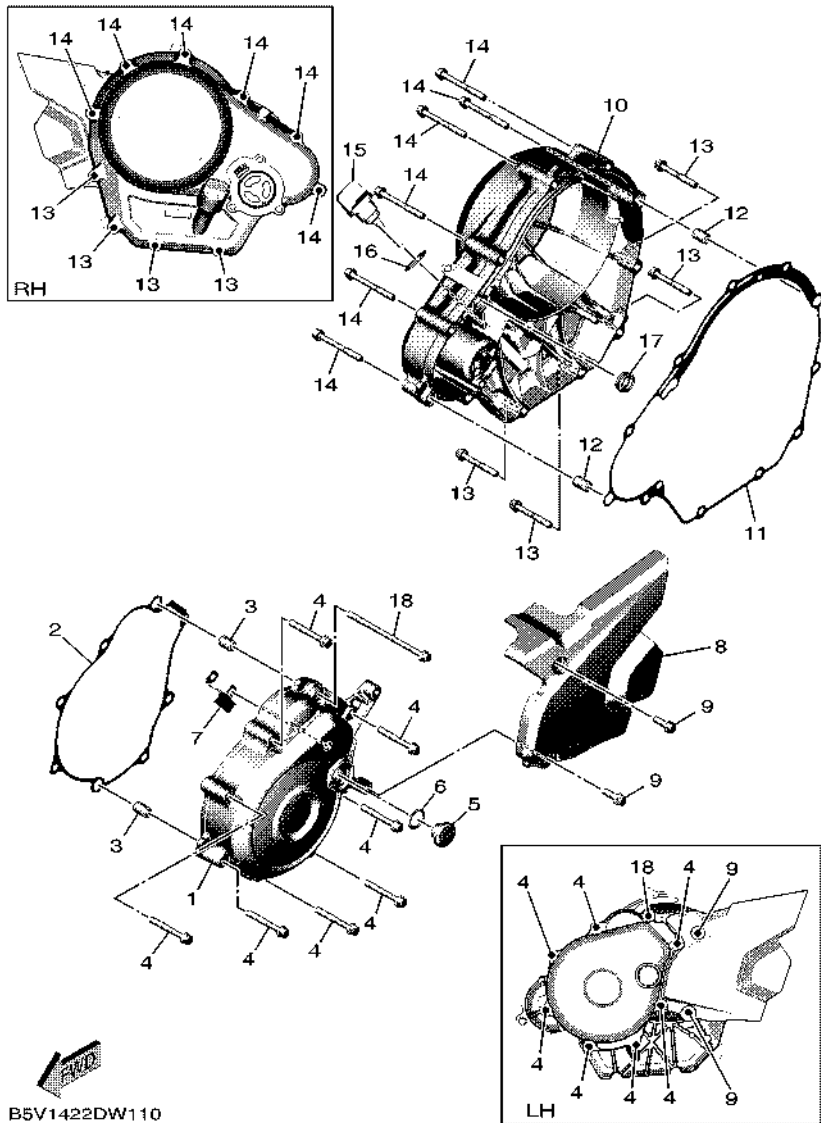
REF. NO.	PART NO.	DESCRIPTION	BSM2				REMARKS
1	BAX-E4703-00	MUFFLER COMP. 1	1				
2	BAX-E4718-00	PROTECTOR, MUFFLER 1	1				
3	90111-06807	BOLT, HEXAGON SOCKET BUTTON	3				
4	BAX-E4799-00	CAP	1				
5	90111-06807	BOLT, HEXAGON SOCKET BUTTON	3				
6	BK7-E4613-00	GASKET, EXHAUST PIPE	1				
7	95702-08500	NUT, FLANGE	3				
8	90201-08612	WASHER, PLATE	1				
9	95D32-08035	BOLT, FLANGE DEEP RECESS	1				



B5V1422DW100

FIG. 10 CRANKCASE

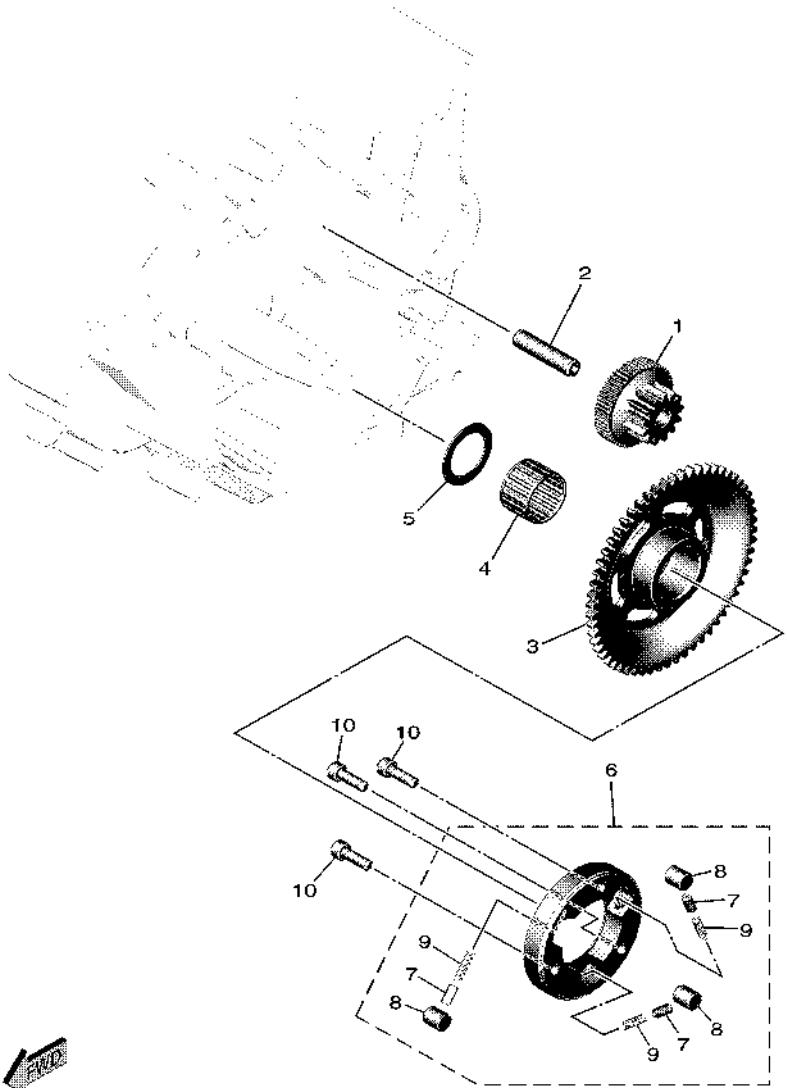
REF. NO.	PART NO.	DESCRIPTION	BSM2			REMARKS
1	BAX-E5150-00	CRANKCASE ASSY	1			
2	91810-14808	PIN, DOWEL	2			
3	95E32-06055	BOLT, FLANGE DEEP RECESS	2			
4	95E32-06045	BOLT, FLANGE DEEP RECESS	7			
5	95E32-06070	BOLT, FLANGE DEEP RECESS	4			
6	95E32-06040	BOLT, FLANGE DEEP RECESS	1			



B5V1422DW110

FIG. 11 CRANKCASE COVER 1

REF. NO.	PART NO.	DESCRIPTION	BSM2	REMARKS
1	BAX-E5411-00	COVER, CRANKCASE 1	1	
2	BAX-E5451-00	GASKET, CRANKCASE COVER 1	1	
3	91810-14808	PIN, DOWEL	2	
4	95E32-06040	BOLT, FLANGE DEEP RECESS	7	
5	90340-14824	PLUG, STRAIGHT SCREW	1	
6	93210-14899	O-RING	1	
7	2ND-E5113-00	PLATE	1	
8	BAX-E5418-10	COVER, CHAIN CASE	1	
9	95E32-06016	BOLT, FLANGE DEEP RECESS	2	
10	BAX-E5421-00	COVER, CRANKCASE 2	1	
11	BAX-E5461-00	GASKET, CRANKCASE COVER 2	1	
12	91810-14808	PIN, DOWEL	2	
13	95E32-06040	BOLT, FLANGE DEEP RECESS	4	
14	95E32-06050	BOLT, FLANGE DEEP RECESS	6	
15	BAX-E5362-00	PLUG, OIL LEVEL	1	
16	93210-19809	O-RING	1	
17	93101-10843	OIL SEAL	1	
18	95E32-06090	BOLT, FLANGE DEEP RECESS	1	





 B5V1422DW120

FIG. 12 STARTER CLUTCH

REF. NO.	PART NO.	DESCRIPTION	BSM2				REMARKS
1	B17-E5514-00	GEAR 2	1				
2	1S8-E5521-00	SHAFT 1	1				
3	2ND-E5524-01	WHEEL, STARTER	1				
4	93310-325YC	BEARING	1				
5	90201-25290	WASHER, PLATE	1				
6	2PV-E5580-00	STARTER CLUTCH OUTER ASSY	1				
7	2PH-E5583-10	.CAP, STARTER CLUTCH SPRING	3				
8	1ST-E5614-00	.PIN, DOWEL	3				
9	2PV-E5572-00	.SPRING, RETURN	3				
10	90110-06873	BOLT, HEXAGON SOCKET HEAD	3				

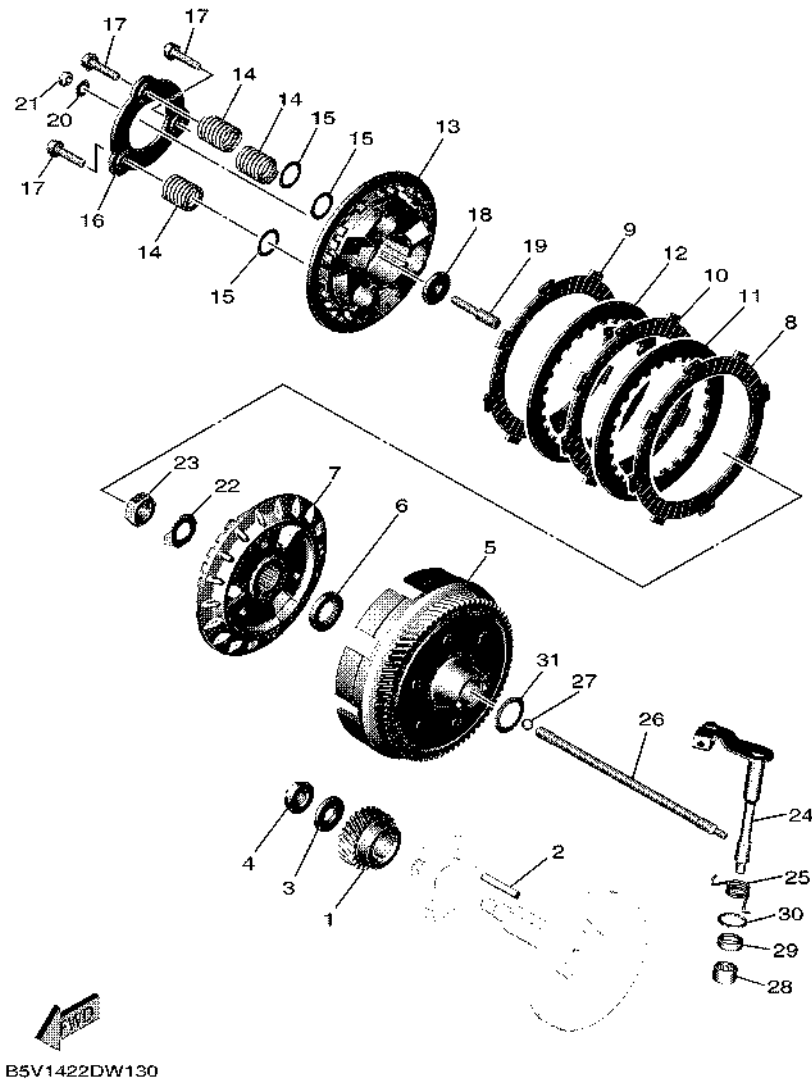


FIG. 13 CLUTCH

REF. NO.	PART NO.	DESCRIPTION	BSM2				REMARKS
1	2ND-E6111-00	GEAR, PRIMARY DRIVE	1				UR
	2ND-E6111-10	GEAR, PRIMARY DRIVE	1				UR
2	38B-E6193-00	KEY, FEATHER	1				
3	90201-12019	WASHER, PLATE	1				
4	B5V-E6647-00	NUT	1				
5	B5V-E6150-00	PRIMARY DRIVEN GEAR COMP.	1				
6	2ND-E6154-00	PLATE, THRUST 1	1				
7	B5V-E6371-00	BOSS, CLUTCH	1				
8	2ND-E6321-00	PLATE, FRICTION	1				
9	B5V-E6331-00	PLATE, FRICTION 2	1				
10	B5V-E6321-00	PLATE, FRICTION	1				
11	B5V-E6325-00	PLATE, CLUTCH 2	1				
12	B5V-E6324-00	PLATE, CLUTCH 1	1				
13	B5V-E6351-00	PLATE, PRESSURE 1	1				
14	BK6-E6333-00	SPRING, CLUTCH 1	3				
15	BK6-E6774-00	WASHER	3				
16	B5V-E6352-00	PLATE, PRESSURE 2	1				
17	B5V-E6337-00	SCREW, SPRING	3				
18	B5V-E6358-00	PLATE, PUSH	1				
19	B5V-E6356-00	ROD, PUSH 1	1				
20	2ND-E6144-00	WASHER	1				
21	2ND-E6344-00	NUT, ADJUSTING	1				
22	90215-14802	WASHER, LOCK	1				
23	90170-14801	NUT	1				
24	B5V-E6380-00	PUSH LEVER ASSY	1				
25	B5V-E6345-00	SPRING, RETURN	1				
26	2ND-E6357-00	ROD, PUSH 2	1				

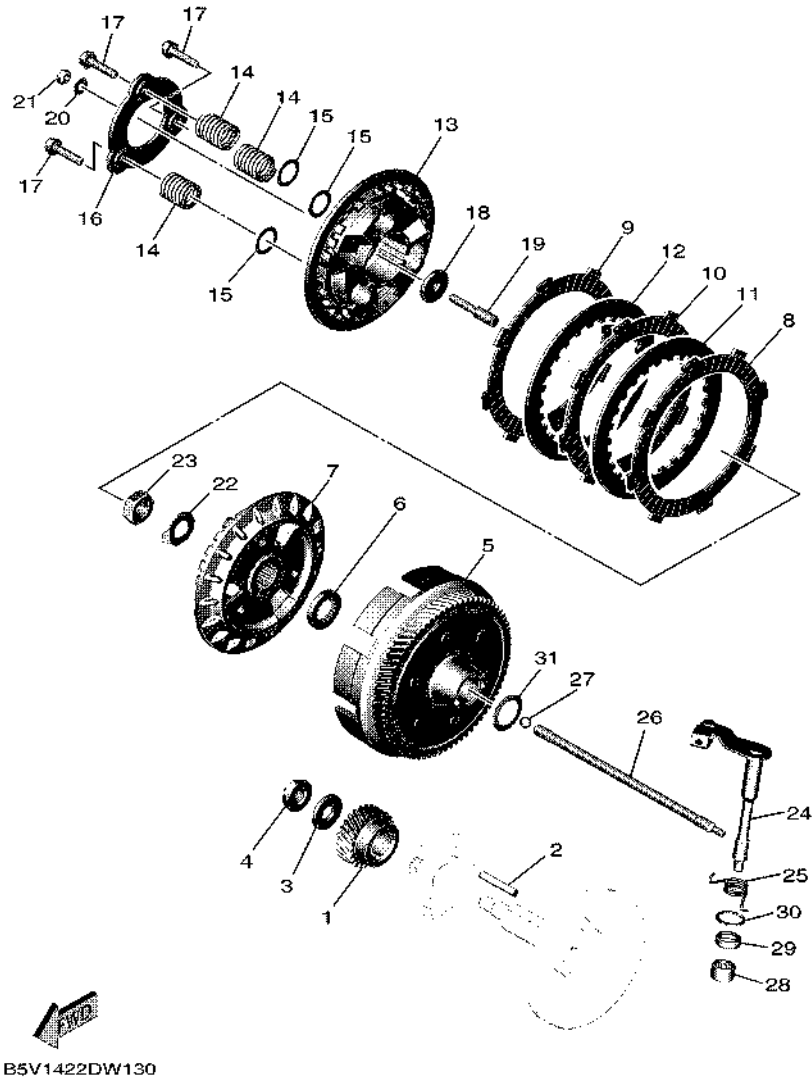
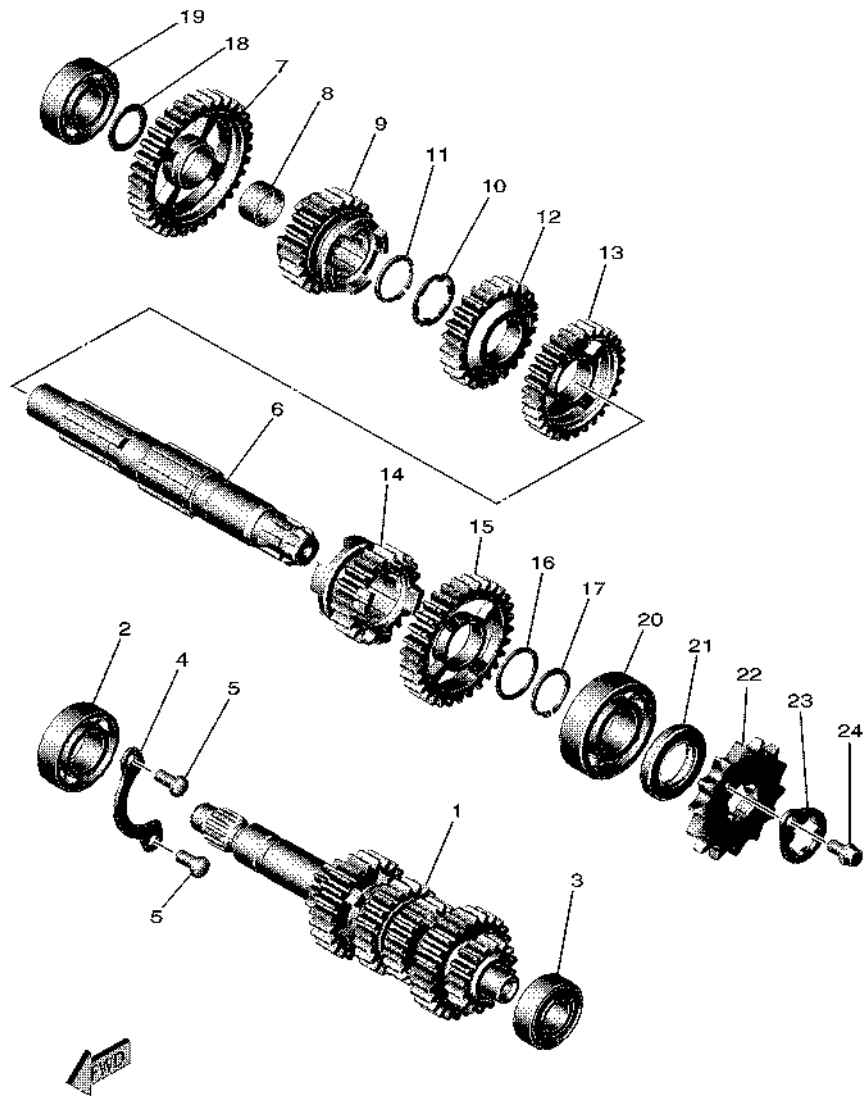


FIG. 13 CLUTCH

REF. NO.	PART NO.	DESCRIPTION	BSM2				REMARKS
27	93505-16844	BALL	1				
28	93315-112Y9	BEARING	1				
29	93102-12877	OIL SEAL	1				
30	99009-20500	CIRCLIP	1				
31	90208-20003	WASHER, CONICAL SPRING	1				
<hr/>							
<hr/>							
<hr/>							
<hr/>							
<hr/>							
<hr/>							
<hr/>							
<hr/>							
<hr/>							
<hr/>							
<hr/>							

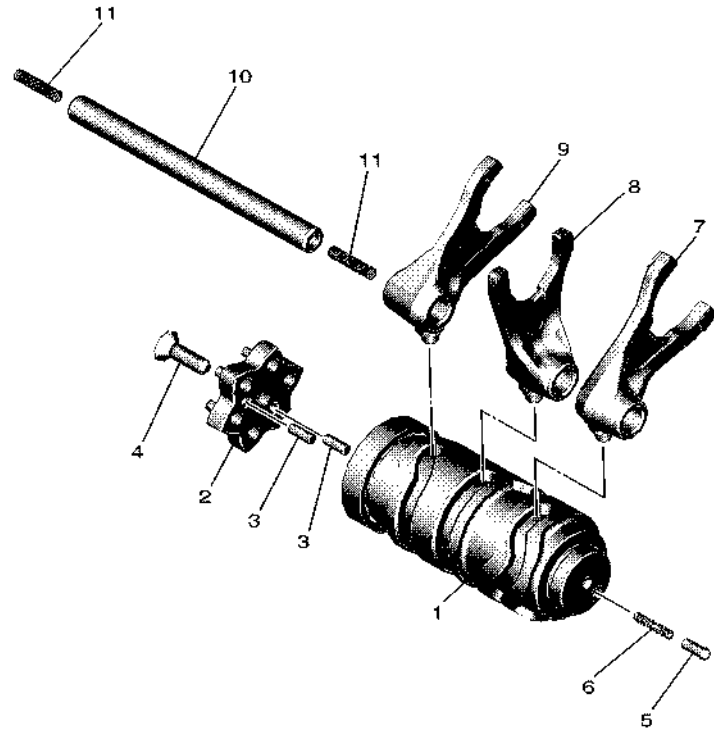


B5V1422DW140

FIG. 14 TRANSMISSION

REF. NO.	PART NO.	DESCRIPTION	BSM2				REMARKS
1	B5V-E7410-00	MAIN AXLE COMP.	1				
2	93306-054XF	BEARING	1				
3	933A6-202X0	BEARING	1				
4	16S-E7471-00	PLATE, COVER	1				
5	98512-06012	SCREW, PAN HEAD	2				
6	B5V-E7421-00	AXLE, DRIVE	1				
7	55P-E7211-00	GEAR, 1ST WHEEL (34T)	1				
8	90387-17804	COLLAR	1				
9	B5V-E7251-00	GEAR, 5TH WHEEL (22T)	1				
10	90209-18208	WASHER	1				
11	93410-22039	CIRCLIP	1				
12	B5V-E7241-00	GEAR, 4TH WHEEL (24T)	1				
13	B5V-E7231-00	GEAR, 3RD WHEEL (30T)	1				
14	B5V-E7261-00	GEAR, 6TH WHEEL (21T)	1				
15	B5V-E7221-00	GEAR, 2ND WHEEL (30T)	1				
16	90201-22793	WASHER, PLATE	1				
17	93410-22039	CIRCLIP	1				
18	90201-173F4	WASHER, PLATE	1				
19	93306-203XR	BEARING	1				
20	93306-272YC	BEARING	1				
21	93102-22827	OIL SEAL	1				
22	93822-14800	SPROCKET, DRIVE (14T)	1				
23	1S8-E7456-00	HOLDER, SPROCKET	1				
24	95E32-06010	BOLT, FLANGE DEEP RECESS	1				

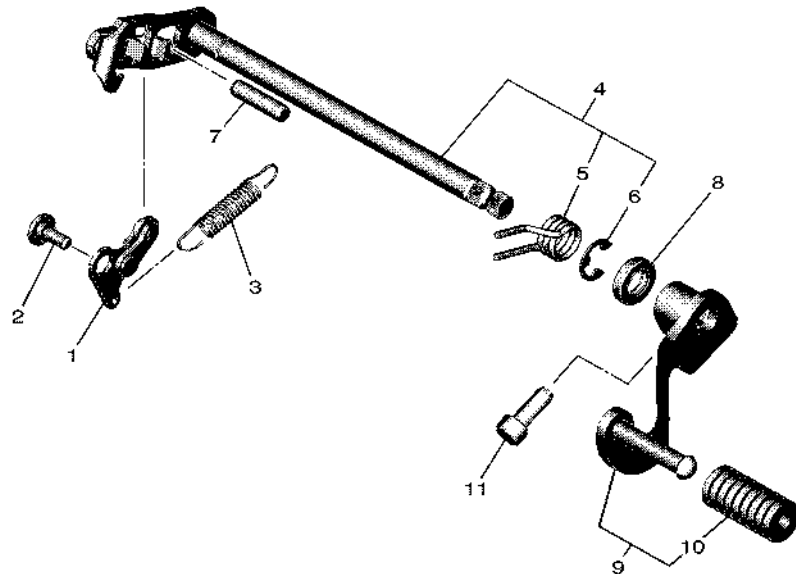
FIG. 15 SHIFT CAM & FORK




 B5V1422DW150

REF. NO.	PART NO.	DESCRIPTION	BSM2				REMARKS
1	B5V-E8540-00	SHIFT CAM ASSY	1				
2	BK7-E8185-00	SEGMENT	1				
3	93604-10011	PIN, DOWEL	2				
4	90151-06818	SCREW, COUNTERSUNK	1				
5	3S4-E8542-00	POINT, NEUTRAL	1				
6	90501-06022	SPRING, COMPRESSION	1				
7	2ND-E8511-00	FORK, SHIFT 1	1				
8	2ND-E8512-00	FORK, SHIFT 2	1				
9	2ND-E8513-00	FORK, SHIFT 3	1				
10	2ND-E8531-00	BAR, SHIFT FORK GUIDE 1	1				
11	90501-06800	SPRING, COMPRESSION	2				

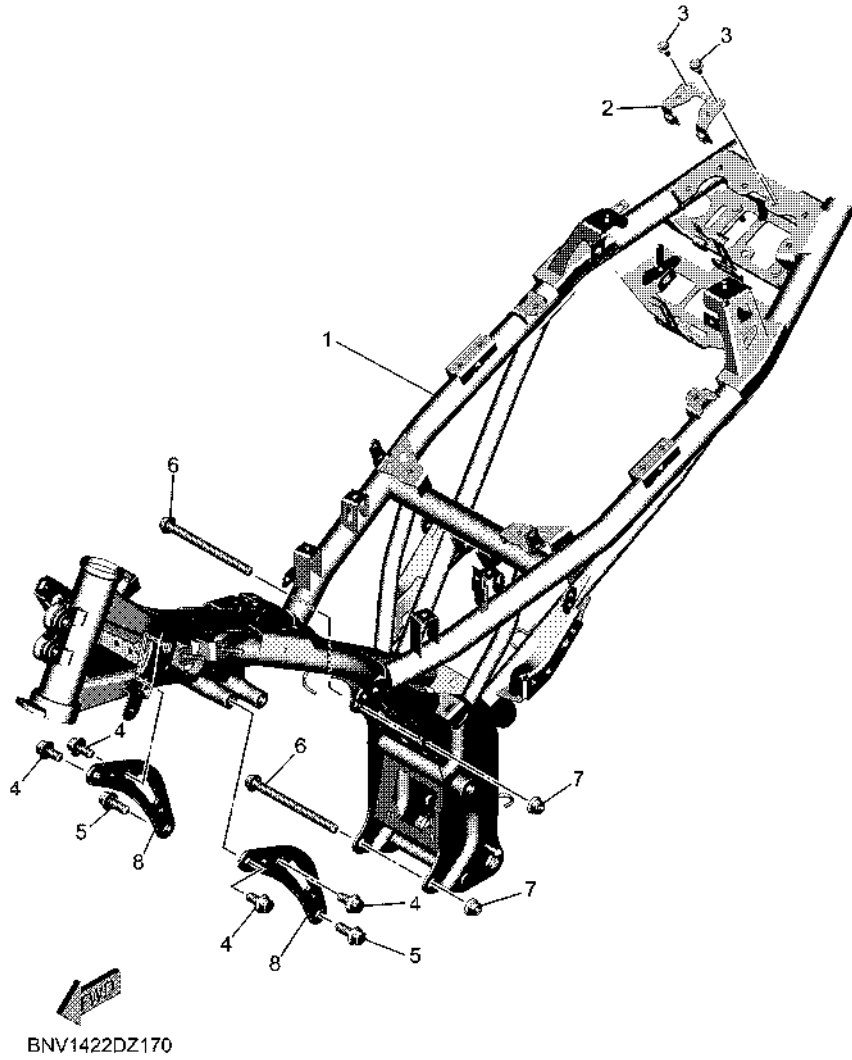
FIG. 16 SHIFT SHAFT



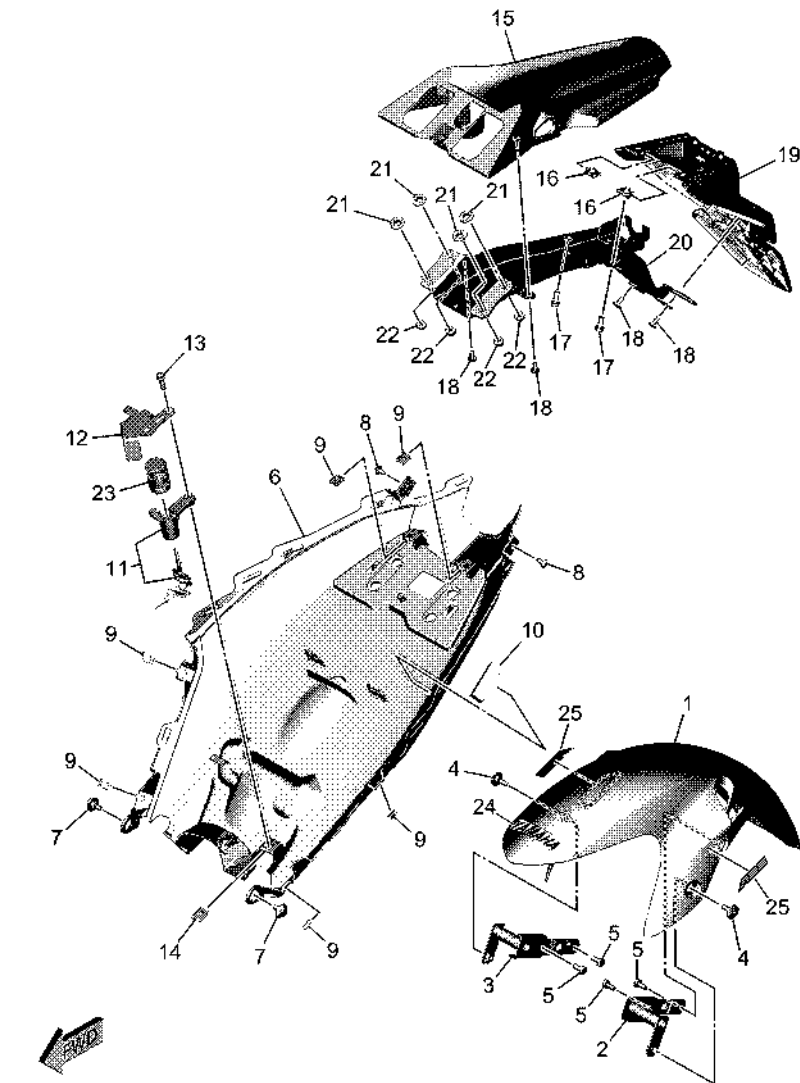

B5V1422DW160

REF. NO.	PART NO.	DESCRIPTION	BSM2				REMARKS
1	B5V-E8140-00	STOPPER LEVER ASSY	1				
2	90109-06279	BOLT	1				
3	B5V-E8337-00	SPRING	1				
4	B5V-E8101-00	SHIFT SHAFT ASSY	1				
5	90508-32837	.SPRING, TORSION	1				
6	99002-10600	.CIRCLIP	1				
7	93608-30839	PIN, DOWEL	1				
8	93102-12809	OIL SEAL	1				
9	BAX-E8110-00	SHIFT PEDAL ASSY	1				
10	5HU-E8113-00	.COVER, SHIFT PEDAL	1				
11	91312-08020	BOLT, HEXAGON SOCKET HEAD	1				

FIG. 17 FRAME



REF. NO.	PART NO.	DESCRIPTION	BSM2					REMARKS
1	BSM-F1110-00	FRAME COMP.	1					
2	BAX-F478X-00	BRACKET, SEAT LOCK	1					
3	95D02-06012	BOLT, FLANGE DEEP RECESS	2					
4	95812-10020	BOLT, FLANGE	4					
5	95817-10025	BOLT, FLANGE	2					
6	90105-108B4	BOLT, FLANGE	2					
7	90179-10805	NUT	2					
8	B5V-F1315-00	STAY, ENGINE 1	2					



BSM2440D0180

FIG. 18 FENDER

REF. NO.	PART NO.	DESCRIPTION	BSM2				REMARKS
1	B17-F1511-10-PP	FENDER, FRONT	1				BNC2
2	B17-F1513-00	STAY, FENDER 1	1				
3	B17-F1514-00	STAY, FENDER 2	1				
4	90109-068A4	BOLT	2				
5	97022-06012	BOLT, HEXAGON	4				
6	BAX-F1611-01	FENDER, REAR	1				
7	90109-06202	BOLT	2				
8	97707-50012	SCREW, TRUSS HEAD TAPPING	2				
9	90183-05807	NUT, SPRING	6				
10	90520-15013	DAMPER, PLATE	1				
11	B5V-F465E-00	ROTOR COMP.	1				
12	BAX-F117K-00	STAY, LOCK	1				
13	95022-06020	BOLT, FLANGE	1				
14	90183-06800	NUT, SPRING	1				
15	BAX-F1629-01	GUARD, MUD	1				
16	90183-06800	NUT, SPRING	2				
17	95022-06014	BOLT, FLANGE	2				
18	90160-05018	SCREW, ROUND TAPPING	4				
19	BAX-F2328-01	MUD GUARD 2	1				
20	BAX-F164F-00	STAY 1	1				
21	90387-08850	COLLAR	4				
22	95602-06200	NUT, SELF-LOCKING	4				
23	BAX-F482H-00	CAP	1				
24	5LW-F153E-30	EMBLEM, YAMAHA	1				
25	BSM-F1578-00	EMBLEM	2				

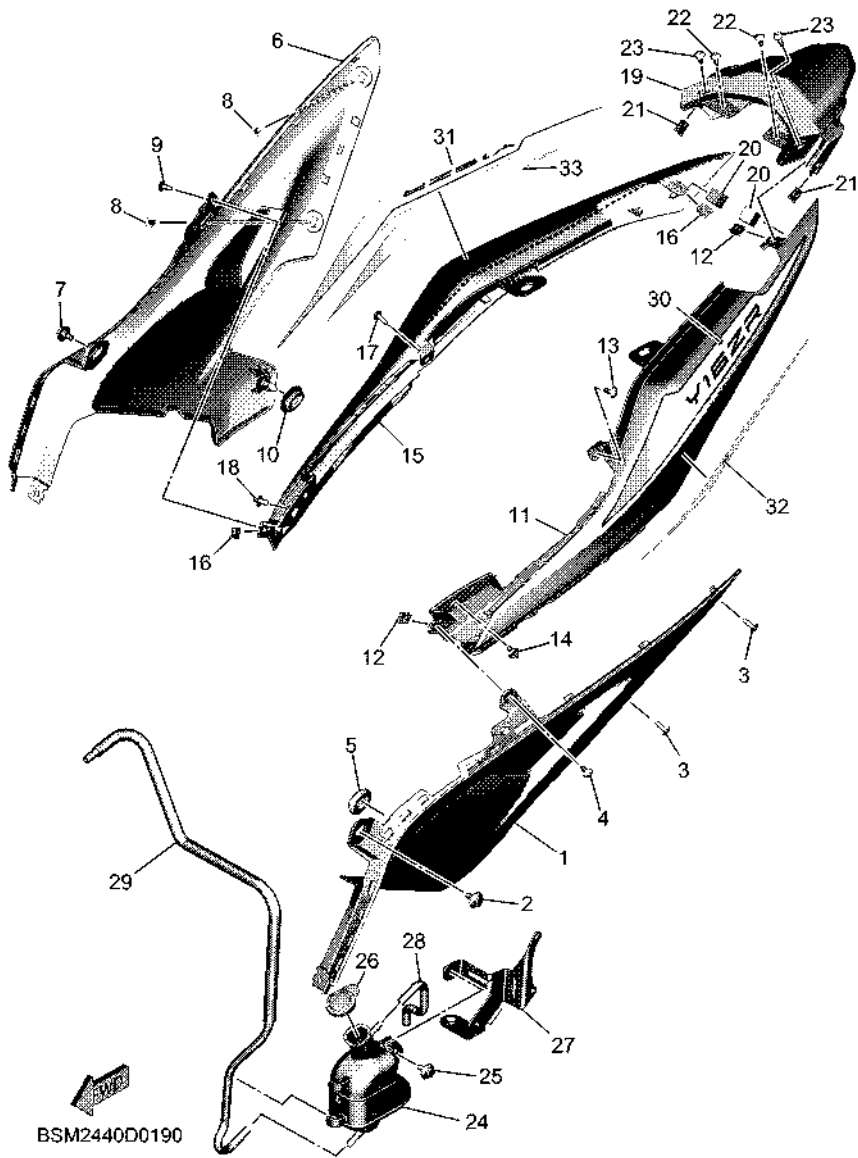
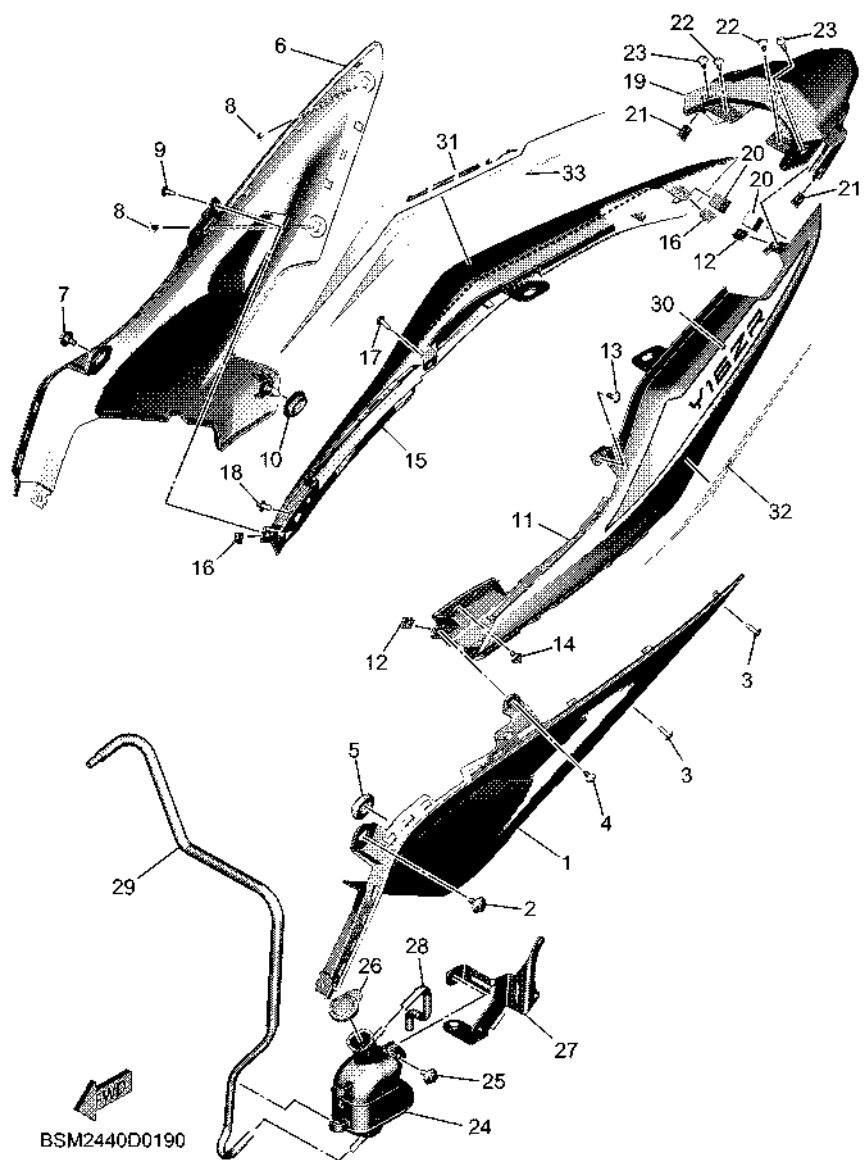


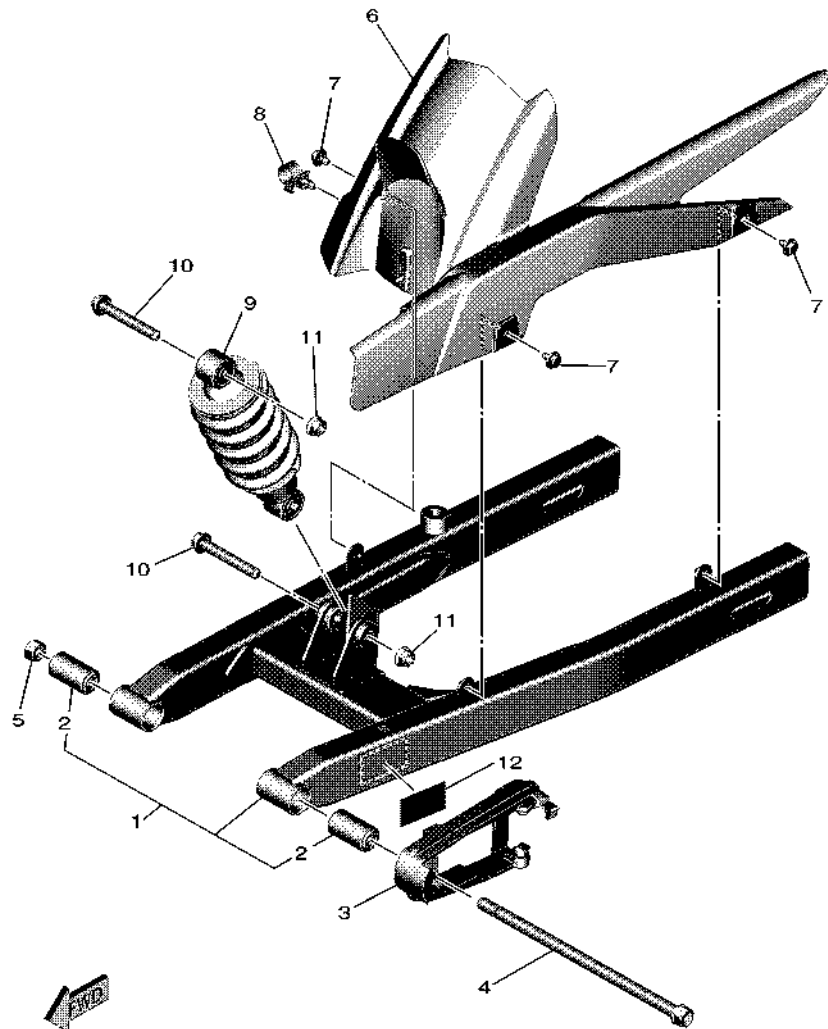
FIG. 19 SIDE COVER

REF. NO.	PART NO.	DESCRIPTION	BSM2				REMARKS
1	BAX-F1711-00	COVER, SIDE 1	1				
2	90109-06202	BOLT	1				
3	90160-05009	SCREW, ROUND TAPPING	2				
4	97707-50012	SCREW, TRUSS HEAD TAPPING	1				
5	90480-01821	GROMMET	1				
6	BAX-F1721-00	COVER, SIDE 2	1				
7	90109-06202	BOLT	1				
8	90160-05009	SCREW, ROUND TAPPING	2				
9	97707-50012	SCREW, TRUSS HEAD TAPPING	1				
10	90480-01821	GROMMET	1				
11	BAX-F1731-00-P9	COVER, SIDE 3	1				BNC2
12	90183-05807	NUT, SPRING	2				
13	90160-05009	SCREW, ROUND TAPPING	1				
14	90269-06816	RIVET	1				
15	BAX-F1741-00-P9	COVER, SIDE 4	1				BNC2
16	90183-05807	NUT, SPRING	2				
17	90160-05009	SCREW, ROUND TAPPING	1				
18	90269-06816	RIVET	1				
19	BAX-F171E-00	COVER, SIDE 5	1				
20	90520-15012	DAMPER, PLATE	2				
21	90183-05807	NUT, SPRING	2				
22	97707-50012	SCREW, TRUSS HEAD TAPPING	2				
23	90160-05009	SCREW, ROUND TAPPING	2				
24	BSM-F1871-00	TANK, RECOVERY	1				
25	90109-068B4	BOLT	1				
26	1S9-F1875-00	CAP	1				
27	BAX-F172L-00	BRACKET 2	1				

FIG. 19 SIDE COVER



REF. NO.	PART NO.	DESCRIPTION	BSM2		REMARKS
28	BAX-F1816-00	PIPE 1	1		
29	BAX-F1817-00	PIPE 2	1		
30	BSM-F173E-30	GRAPHIC 1	1		
31	BSM-F173F-30	GRAPHIC 2	1		
32	BSM-F174G-30	GRAPHIC 3	1		
33	BSM-F174H-30	GRAPHIC 4	1		



B5V1422DW220

FIG. 20 REAR ARM & SUSPENSION

REF. NO.	PART NO.	DESCRIPTION	BSM2				REMARKS
1	BAX-F2100-00	REAR ARM ASSY	1				
2	5B9-F2123-00	.BUSH 1	2				
3	B17-F2151-10	SEAL, GUARD	1				
4	4NP-F5381-00	AXLE, WHEEL	1				
5	95614-12100	NUT, U	1				
6	B17-F1650-00	REAR FENDER COMP.	1				
7	90119-06155	BOLT, WITH WASHER	3				
8	90464-16012	CLAMP	1				
9	B17-F2210-30	SHOCK ABSORBER ASSY, REAR	1				
10	90105-108B8	BOLT, FLANGE	2				
11	95602-10200	NUT, SELF-LOCKING	2				
12	B17-F1668-10	LABEL, TIRE	1				

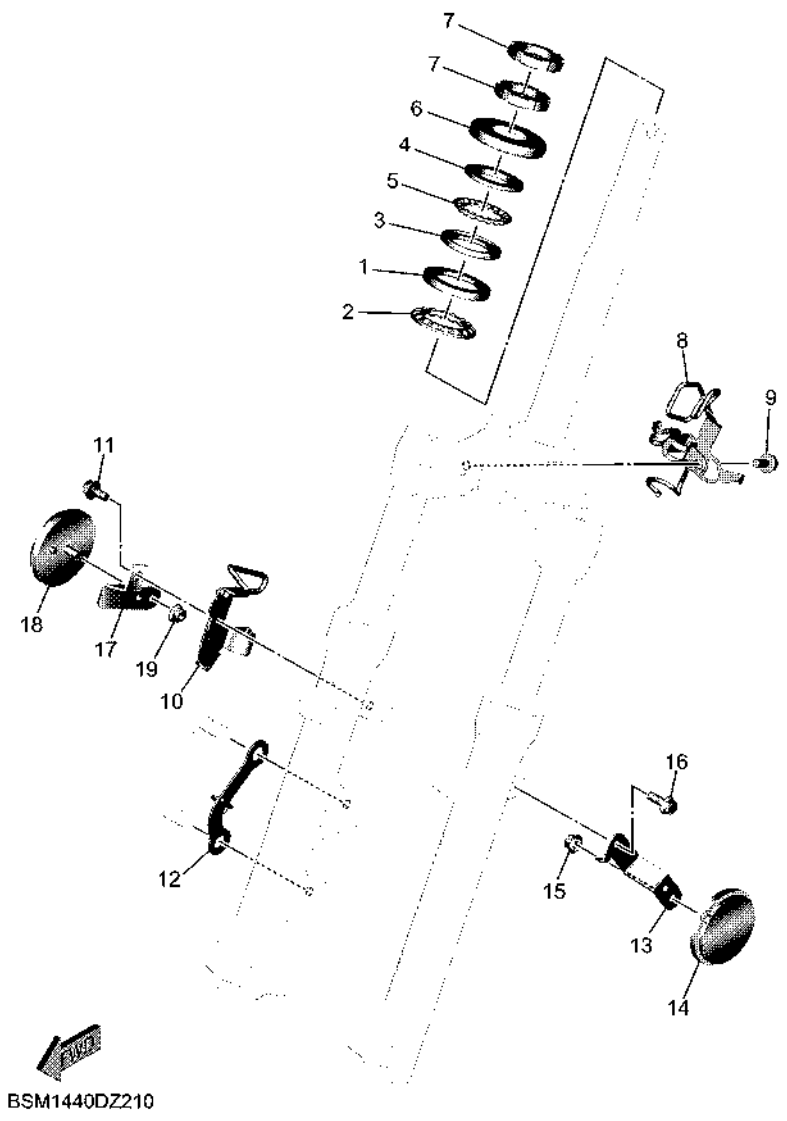


FIG. 21 STEERING

REF. NO.	PART NO.	DESCRIPTION	BSM2				REMARKS
1	1KL-F3412-10	RACE, BALL 2	1				
2	5VL-F341E-10	RETAINER, BALL BEARING	1				
3	4RT-F3412-10	RACE, BALL 2	1				
4	4RT-F3411-10	RACE, BALL 1	1				
5	1P6-F341E-10	RETAINER, BALL BEARING	1				
6	5P1-F3416-01	COVER, BALL RACE 2	1				
7	90179-25002	NUT	2				
8	BSM-F5875-00	HOLDER, BRAKE HOSE 1	1				
9	95D02-06012	BOLT, FLANGE DEEP RECESS	1				
10	BSM-F5876-00	HOLDER, BRAKE HOSE 2	1				
11	95D02-06016	BOLT, FLANGE DEEP RECESS	1				
12	BSM-F3317-00	HOLDER, CABLE	1				
13	B17-F113J-00	BRACKET, REFLECTOR 1	1				
14	BSM-H5111-00	REFLECTOR, FRONT 1	1				
15	90185-05803	NUT, SELF-LOCKING	1				
16	95D02-06012	BOLT, FLANGE DEEP RECESS	1				
17	B17-F113K-00	BRACKET, REFLECTOR 2	1				
18	BSM-H5111-00	REFLECTOR, FRONT 1	1				
19	90185-05803	NUT, SELF-LOCKING	1				

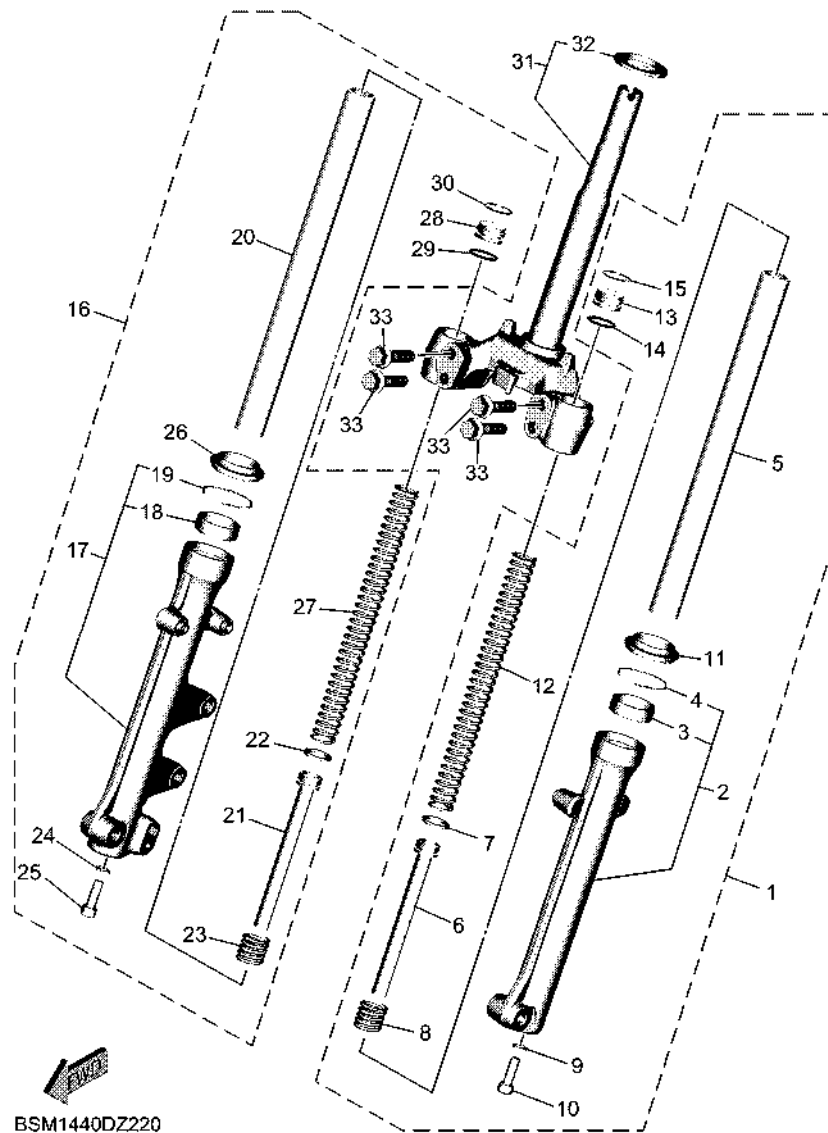


FIG. 22 FRONT FORK

REF. NO.	PART NO.	DESCRIPTION	BSM2	REMARKS
1	BSM-F3102-00	FRONT FORK ASSY (L.H)	1	
2	BSM-F3126-00	.TUBE, OUTER (L.H)	1	
3	4UV-F3145-00	.OIL SEAL	1	
4	5P0-F3156-00	.RING, SNAP	1	
5	BAX-F3110-00	.INNER TUBE COMP.1	1	
6	BAX-F3170-00	.CYLINDER COMP., FRONT FORK	1	
7	BAX-F3157-00	.RING, PISTON	1	
8	5TF-F3152-00	.SPRING, SUB	1	
9	509-F3158-L0	.GASKET	1	
10	31D-F3181-50	.BOLT, HEXAGON SOCKET HEAD	1	
11	5LL-F3144-00	.SEAL, DUST	1	
12	BAX-F3141-00	.SPRING, FRONT FORK	1	
13	BAX-F3111-00	.BOLT, CAP	1	
14	2JG-F3147-00	.O-RING	1	
15	31D-F3153-00	.RING, SNAP	1	
16	BSM-F3103-00	FRONT FORK ASSY (R.H)	1	
17	BSM-F3136-00	.TUBE, OUTER 2	1	
18	4UV-F3145-00	.OIL SEAL	1	
19	5P0-F3156-00	.RING, SNAP	1	
20	BAX-F3110-00	.INNER TUBE COMP.1	1	
21	BAX-F3170-00	.CYLINDER COMP., FRONT FORK	1	
22	BAX-F3157-00	.RING, PISTON	1	
23	5TF-F3152-00	.SPRING, SUB	1	
24	509-F3158-L0	.GASKET	1	
25	31D-F3181-50	.BOLT, HEXAGON SOCKET HEAD	1	
26	5LL-F3144-00	.SEAL, DUST	1	
27	BAX-F3141-00	.SPRING, FRONT FORK	1	

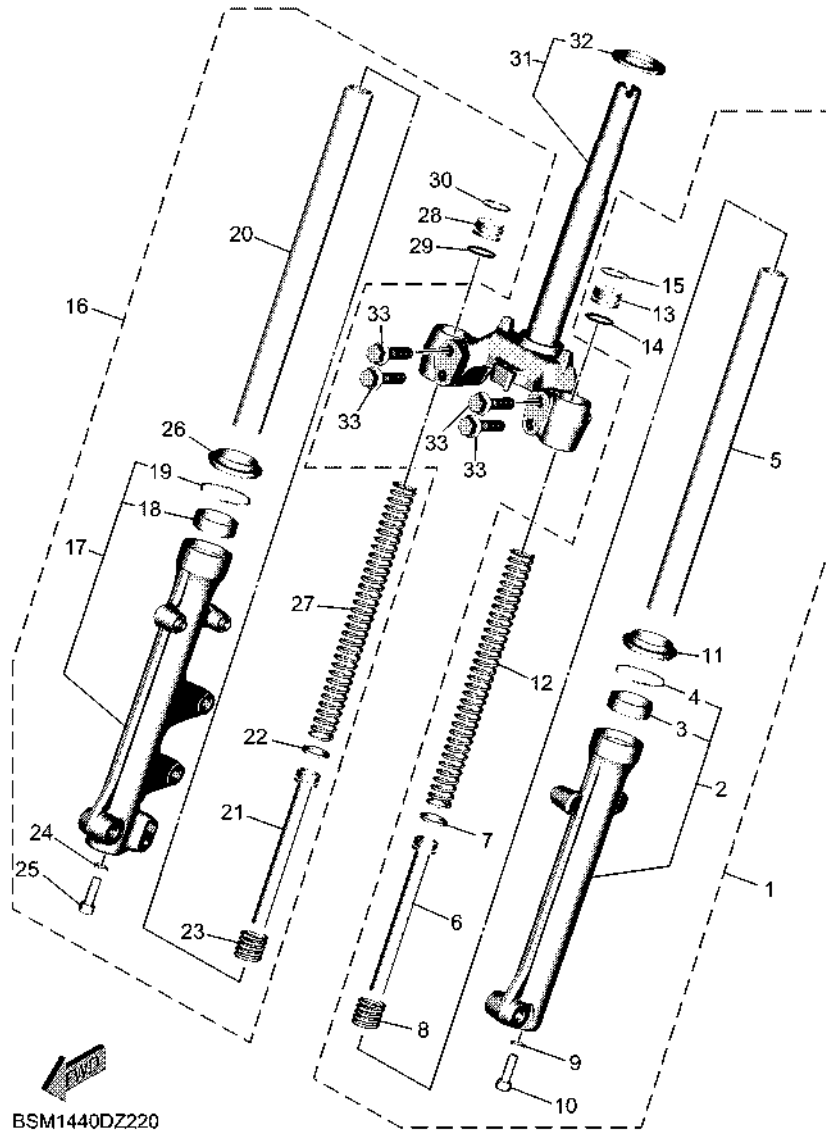
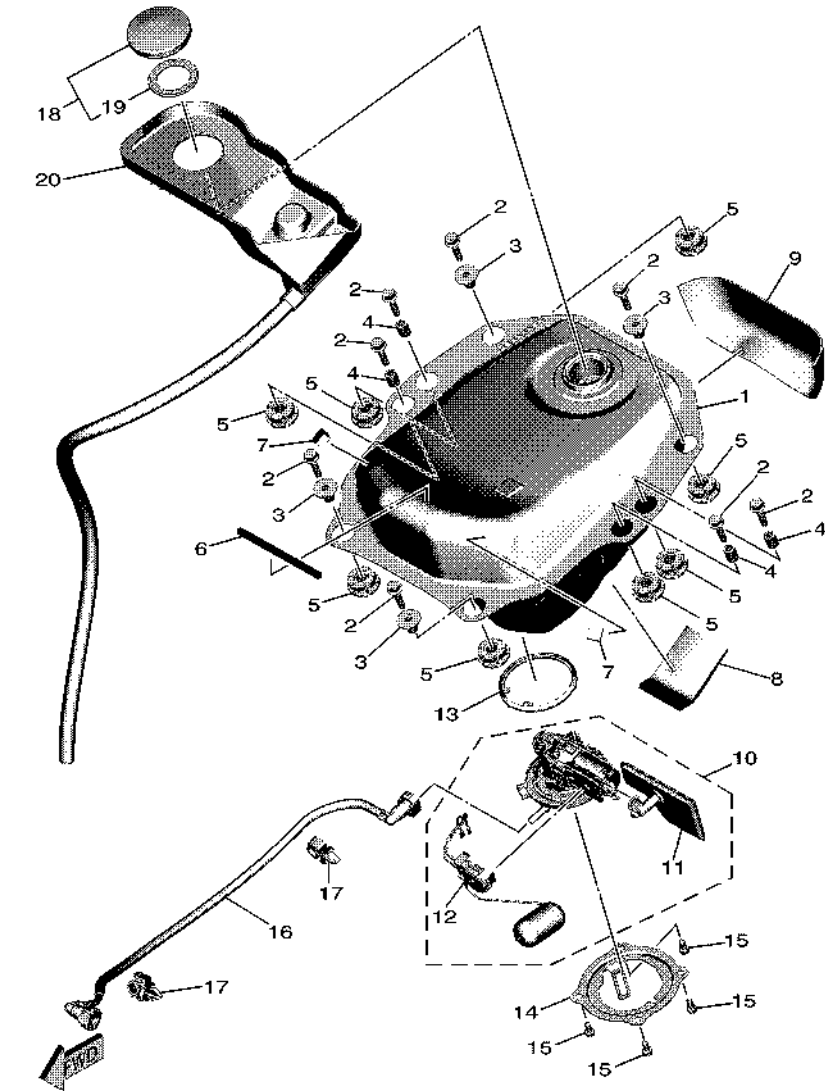


FIG. 22 FRONT FORK

REF. NO.	PART NO.	DESCRIPTION	BSM2			REMARKS
28	BAX-F3111-00	.BOLT, CAP	1			
29	2JG-F3147-00	.O-RING	1			
30	31D-F3153-00	.RING, SNAP	1			
31	BAX-F3340-00	UNDER BRACKET COMP.	1			
32	4FP-F3411-10	.RACE, BALL 1	1			
33	31D-F3346-00	BOLT 1	4			

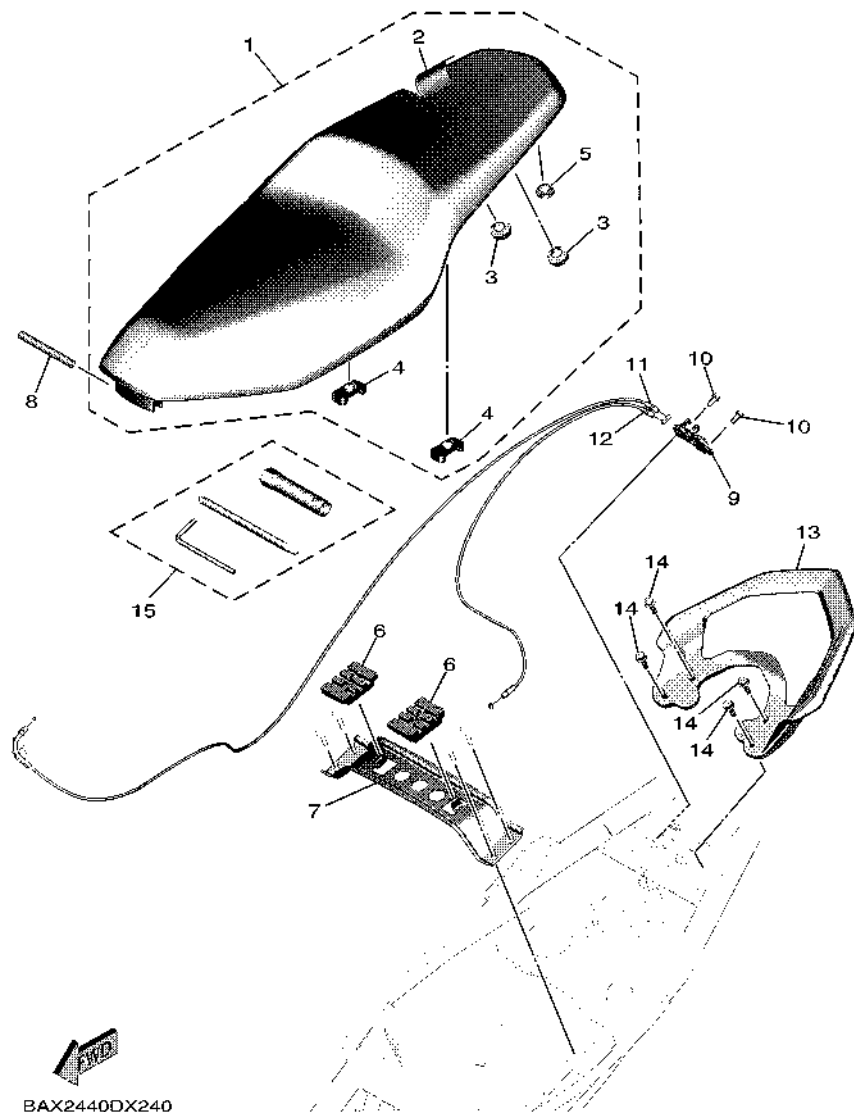


BAX1440DW230

FIG. 23 FUEL TANK

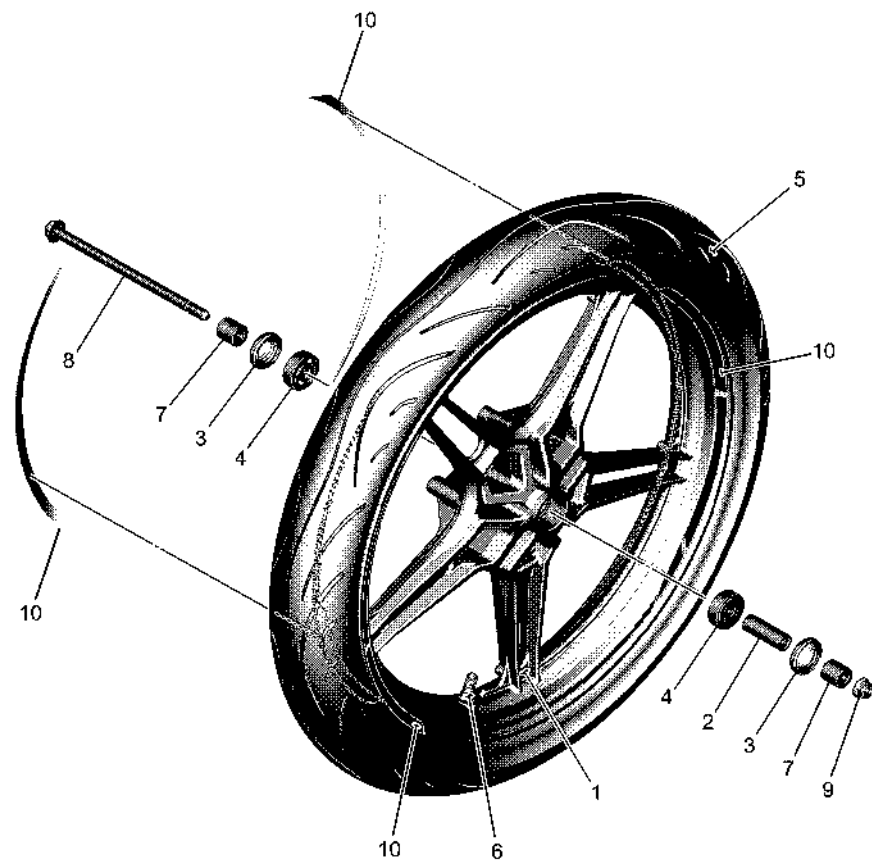
REF. NO.	PART NO.	DESCRIPTION	BSM2				REMARKS
1	BAX-F4110-00	FUEL TANK COMP.	1				
2	95D32-06025	BOLT, FLANGE DEEP RECESS	8				
3	1FC-F412G-00	COLLAR	4				
4	90560-07007	SPACER	4				
5	BSM-F4339-00	GROMMET	8				
6	90520-05028	DAMPER, PLATE	1				
7	90520-08007	DAMPER, PLATE	2				
8	1S8-F8372-00	DAMPER	1				
9	90520-02859	DAMPER, PLATE	1				
10	B5V-E3907-00	FUEL PUMP COMP.	1				
11	54P-E3915-00	.FILTER, FUEL SUCTION	1				
12	B5V-H5752-00	.SENDER	1				
13	1DB-F414G-01	SEAL	1				
14	BAX-F4491-00	BRACKET, FUEL PUMP	1				
15	91332-05010	BOLT	4				
16	B5V-E3971-00	PIPE, FUEL 1	1				
17	90464-10008	CLAMP	2				
18	4YY-F4610-00	CAP ASSY	1				
19	4YY-F4612-00	.PACKING, CAP	1				
20	BAX-F41B1-00	COVER, TANK	1				

FIG. 24 SEAT



REF. NO.	PART NO.	DESCRIPTION	BSM2				REMARKS
1	BAX-F4730-50	DOUBLE SEAT ASSY	1				
2	BAX-F470F-40	.SEAT COVER COMP.	1				
3	1VP-F4741-10	.PAD, SEAT	2				
4	BAX-F4741-00	.PAD, SEAT	2				
5	BAX-F4741-10	.PAD, SEAT	1				
6	BAX-F4747-00	DAMPER, SEAT	2				
7	BAX-F471A-00	STAY, SEAT	1				
8	2WB-F4727-00	PIN, SEAT FITTING	1				
9	B5V-F4780-00	SEAT LOCK ASSY	1				
10	95022-06012	BOLT, FLANGE	2				
11	BAX-F478E-00	CABLE, SEAT LOCK	1				
12	B5V-F479D-00	WIRE, SEAT LOCK 2	1				
13	BAX-F4773-00-P7	HANDLE, SEAT	1				CS6 FOR BNC2
14	95D32-06020	BOLT, FLANGE DEEP RECESS	4				
15	BAX-F8100-00	TOOL KIT	1				

FIG. 25 FRONT WHEEL




BSM2440D0250

REF. NO.	PART NO.	DESCRIPTION	BSM2				REMARKS
1	BNV-F5168-00-33	CAST WHEEL, FRONT	1				YB FOR BNC2
2	90560-10292	SPACER	1				
3	93106-20816	OIL SEAL	2				
4	93306-300YN	BEARING	2				
5	94109-17809	TIRE(90/80-17 M/C 46P DM1060F)	1				DURO
6	93900-00817	VALVE, RIM (TR412)	1				
7	90387-10277	COLLAR	2				
8	B6A-F5181-00	AXLE, WHEEL	1				
9	95602-10200	NUT, SELF-LOCKING	1				
10	BSM-F51G1-30	GRAPHIC 1	4				

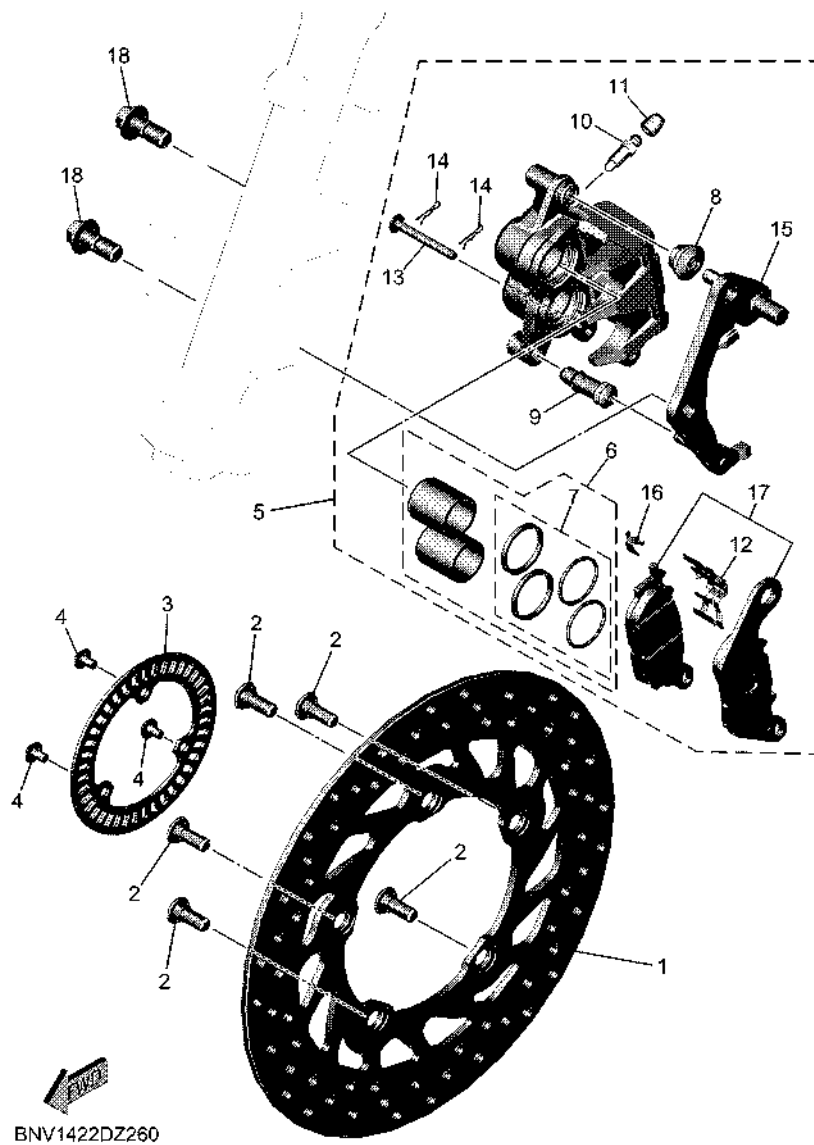
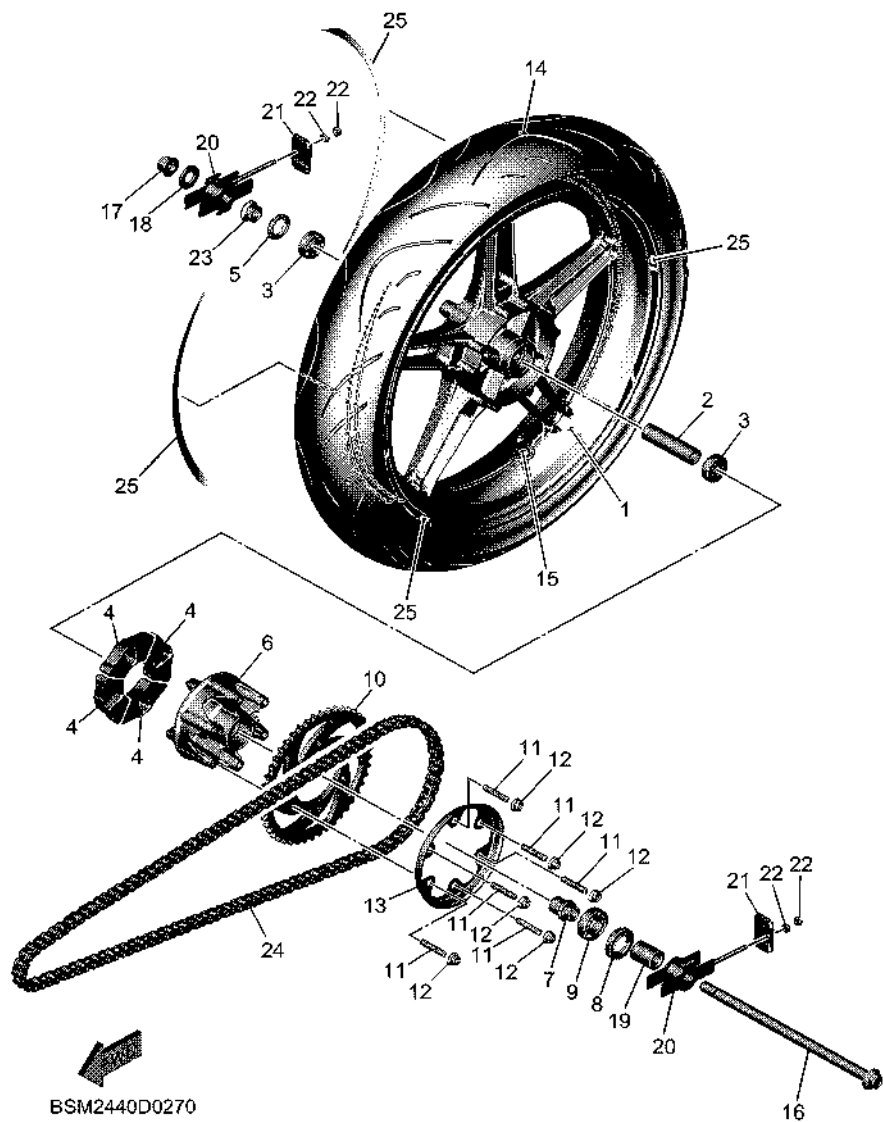


FIG. 26 FRONT BRAKE CALIPER

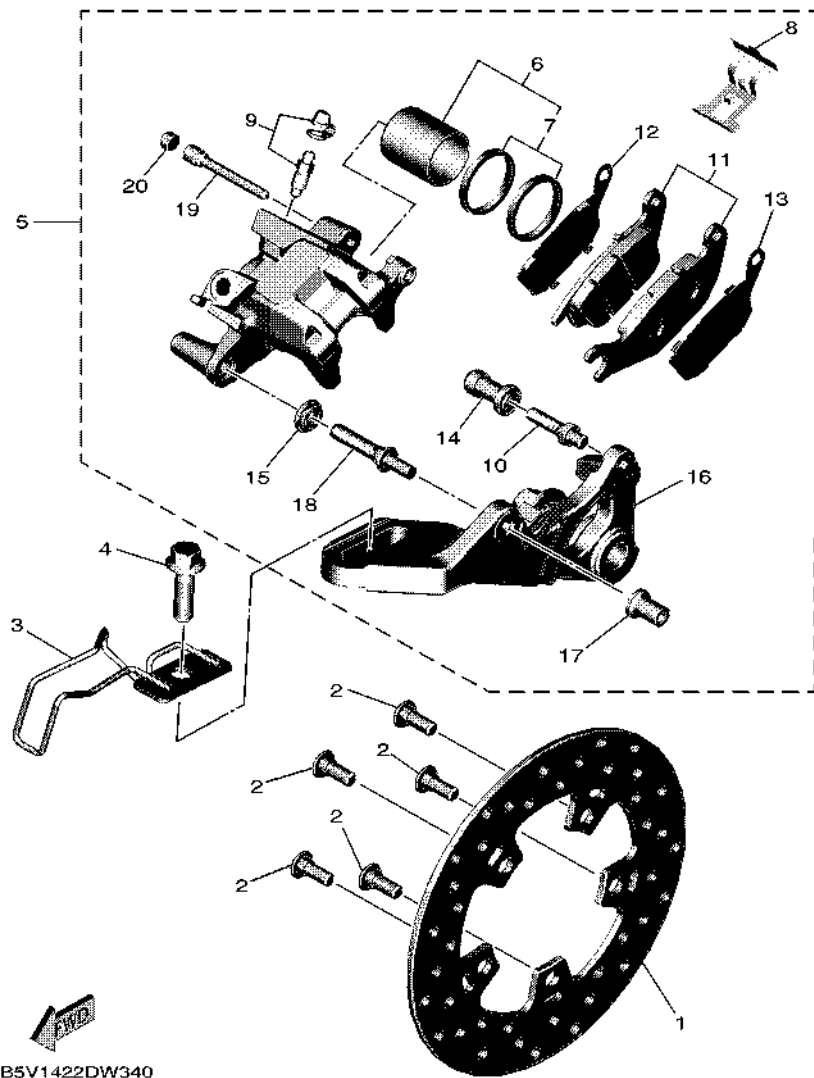
REF. NO.	PART NO.	DESCRIPTION	BSM2				REMARKS
1	BNV-F582U-00	DISK, BRAKE (RIGHT)	1				
2	90109-08087	BOLT	5				
3	BNV-F517G-00	ROTOR, SENSOR	1				
4	90149-05030	SCREW	3				
5	B5V-F580U-00	CALIPER ASSY (RIGHT)	1				
6	3C1-F5802-00	.PISTON ASSY, CALIPER	1				
7	3C1-F5803-50	..CALIPER SEAL KIT	1				
8	5YP-F5917-00	.BOOT, CALIPER	1				
9	5YP-F5937-00	.BOOT 2	1				
10	47X-25824-01	.SCREW, BLEED	1				
11	2NL-F5825-00	.CAP	1				
12	5P0-F5919-01	.SUPPORT, PAD	1				
13	5YP-F5924-00	.PIN, PAD	1				
14	5YP-F5925-01	.CLIP	2				
15	1DB-F5921-01	.BRACKET, SUPPORT	1				
16	5YP-F5939-00	.CLIP, PAD	1				
17	B5V-F5805-00	.BRAKE PAD KIT	1				
18	90105-108A6	BOLT, FLANGE	2				

FIG. 27 REAR WHEEL



REF. NO.	PART NO.	DESCRIPTION	BSM2	REMARKS
1	B17-F5338-10-33	CAST WHEEL, REAR	1	YB FOR BNC2
2	B17-F5317-00	SPACER, BEARING	1	
3	933A6-202Y9	BEARING	2	
4	B17-F5364-00	DAMPER	4	
5	93106-22808	OIL SEAL	1	
6	B17-F5366-00	CLUTCH, HUB	1	
7	B17-F5377-00	COLLAR, WHEEL	1	
8	93106-26815	OIL SEAL	1	
9	93306-004XV	BEARING	1	
10	BAX-F5446-00	SPROCKET, DRIVEN (46T)	1	
11	90116-08826	BOLT, STUD	6	
12	95602-08200	NUT, U FLANGE	6	
13	BAX-F5689-00	PLATE, GUIDE	1	
14	94112-17809	TIRE (120/70-70 M/C 58P)	1	DURO
15	93900-00817	VALVE, RIM (TR412)	1	
16	B5V-F5381-00	AXLE, WHEEL	1	
17	95602-14200	NUT, SELF-LOCKING	1	
18	90201-15030	WASHER, PLATE	1	
19	90387-15830	COLLAR	1	
20	BAX-F5388-00	PULLER, CHAIN 1	2	
21	BAX-F2174-00	END 1	2	
22	95302-06600	NUT, HEXAGON	4	
23	B17-F5383-00	COLLAR, WHEEL	1	
24	94568-K8124	CHAIN (RK 428-124L)	1	
25	BSM-F51G1-30	GRAPHIC 1	4	

FIG. 28 REAR BRAKE CALIPER



B5V1422DW340

REF. NO.	PART NO.	DESCRIPTION	BSM2				REMARKS
1	B17-F582W-00	DISK, REAR BRAKE 2	1				
2	90109-08087	BOLT	5				
3	BAX-F2167-00	GUIDE	1				
4	95D32-10035	BOLT, FLANGE DEEP RECESS	1				
5	1PA-F580W-01	CALIPER ASSY, REAR 2	1				
6	50C-F5802-00	.PISTON ASSY, CALIPER	1				
7	3GD-25803-00	..CALIPER SEAL KIT	1				
8	50C-F5919-00	.SUPPORT, PAD	1				
9	50C-W0048-00	.BLEED SCREW KIT	1				
10	50C-F5914-00	.PIN, SLIDE	1				
11	1PA-F5806-00	.BRAKE PAD KIT 2	1				
12	50C-F5827-00	.SHIM, CALIPER	1				
13	50C-F5828-00	.SHIM, CALIPER	1				
14	50C-F5937-00	.BOOT 2	1				
15	50C-F5917-00	.BOOT, CALIPER	1				
16	1PA-F5921-01	.BRACKET, SUPPORT	1				
17	50C-F5961-00	.NUT	1				
18	50C-2536G-00	.PIN	1				
19	50C-F5933-00	.PIN HANGER	1				
20	50C-F5916-00	.PLUG	1				

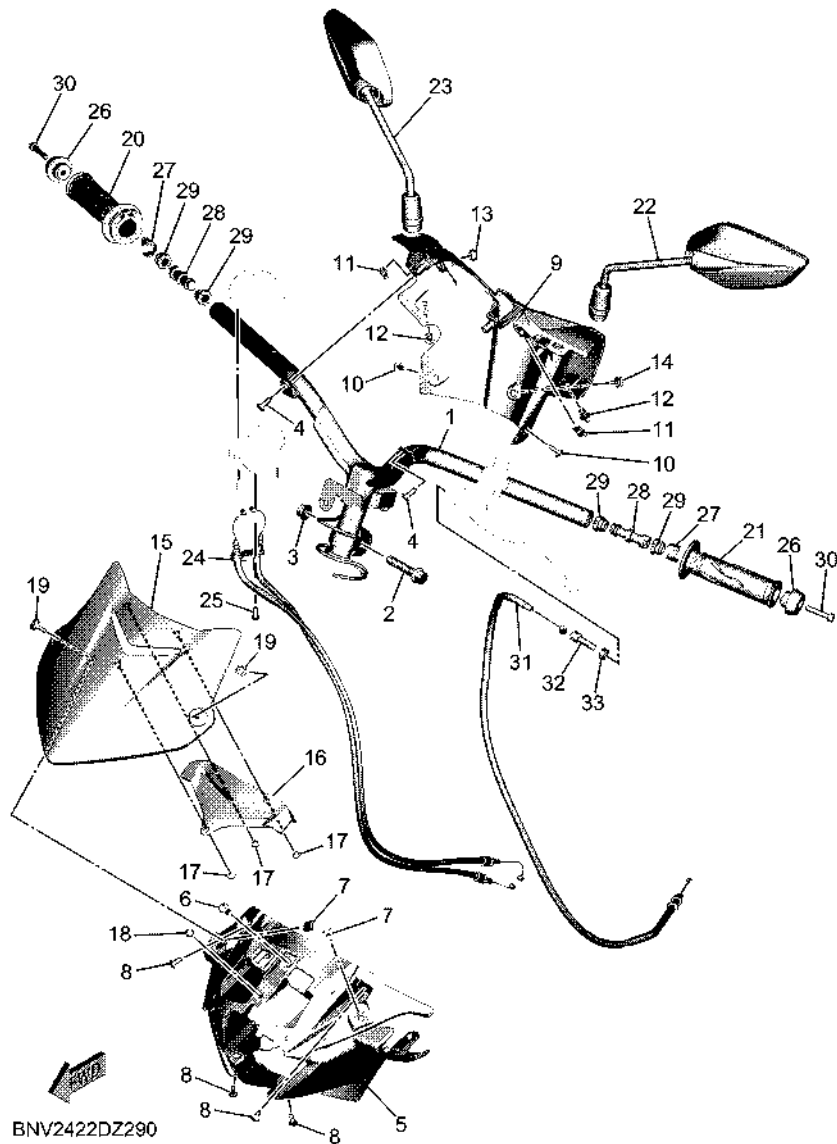


FIG. 29 STEERING HANDLE & CABLE

REF. NO.	PART NO.	DESCRIPTION	BSM2	REMARKS
1	BSM-F6110-00	HANDLE COMP.	1	
2	90105-10896	BOLT, FLANGE	1	
3	90185-10011	NUT, SELF-LOCKING	1	
4	90160-05012	SCREW, ROUND TAPPING	2	
5	BAX-F6143-00	COVER, HANDLE UPPER 1	1	
6	90269-06816	RIVET	1	
7	90183-05061	NUT, SPRING	2	
8	97707-50012	SCREW, TRUSS HEAD TAPPING	4	
9	BAX-F6145-00	COVER, HANDLE UPPER 2	1	
10	90160-05009	SCREW, ROUND TAPPING	2	
11	90183-05807	NUT, SPRING	2	
12	90269-06816	RIVET	2	
13	1S8-F6199-00	PLUG, BLIND	1	
14	90111-05049	BOLT, HEXAGON SOCKET BUTTON	1	
15	BSM-F61AA-00-P3	VISOR	1	VLGC1 FOR BNC2
16	BSM-H3615-00	BLIND, METER	1	
17	90183-05M02	NUT, SPRING	3	
18	BAX-F1717-00	DAMPER	1	
19	90111-05817	BOLT, HEXAGON SOCKET BUTTON	2	
20	B17-F6240-02	GRIP ASSY	1	
21	1VP-F6241-00	GRIP	1	
22	B17-F6280-10	REAR VIEW MIRROR ASSY (LEFT)	1	
23	B17-F6290-10	REAR VIEW MIRROR ASSY (RIGHT)	1	
24	BAX-F6301-00	THROTTLE CABLE ASSY	1	
25	92012-05012	BOLT, BUTTON HEAD	1	
26	BAX-F6246-00	END, GRIP	2	
27	16S-F6257-00	STOPPER	2	

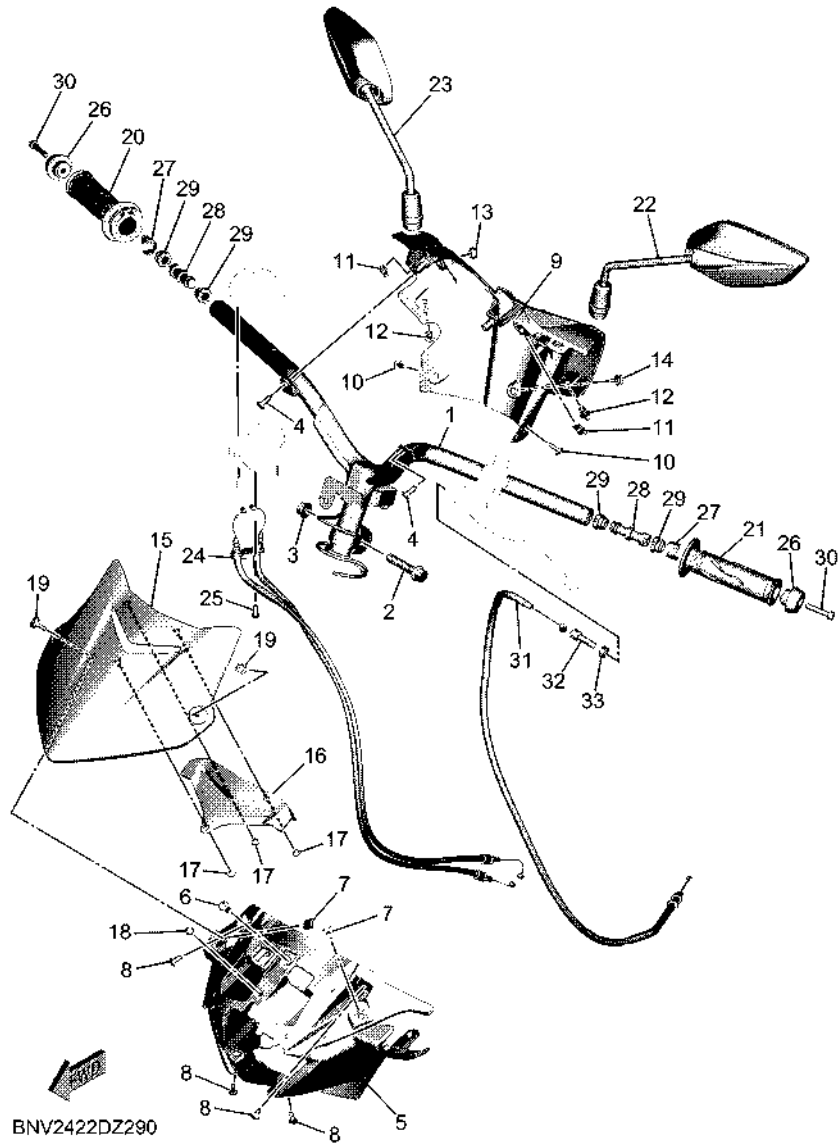
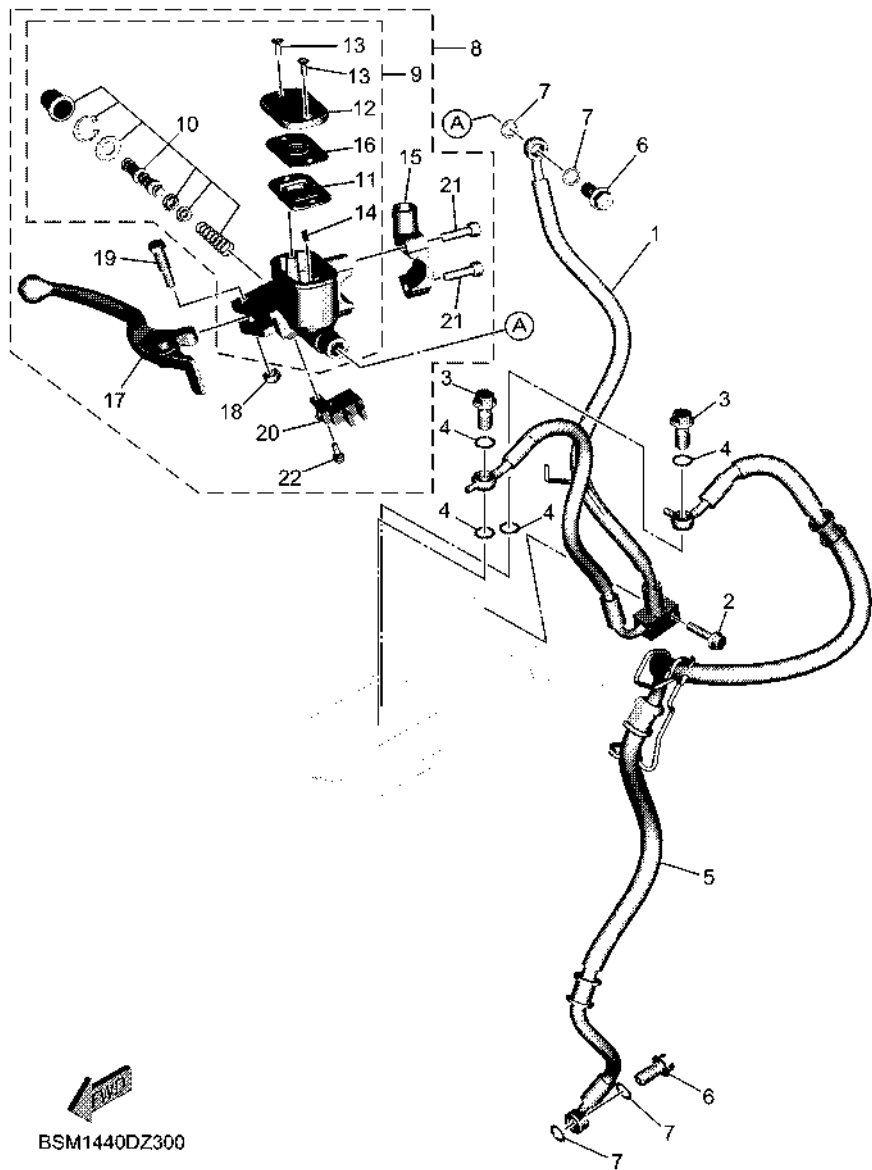


FIG. 29 STEERING HANDLE & CABLE

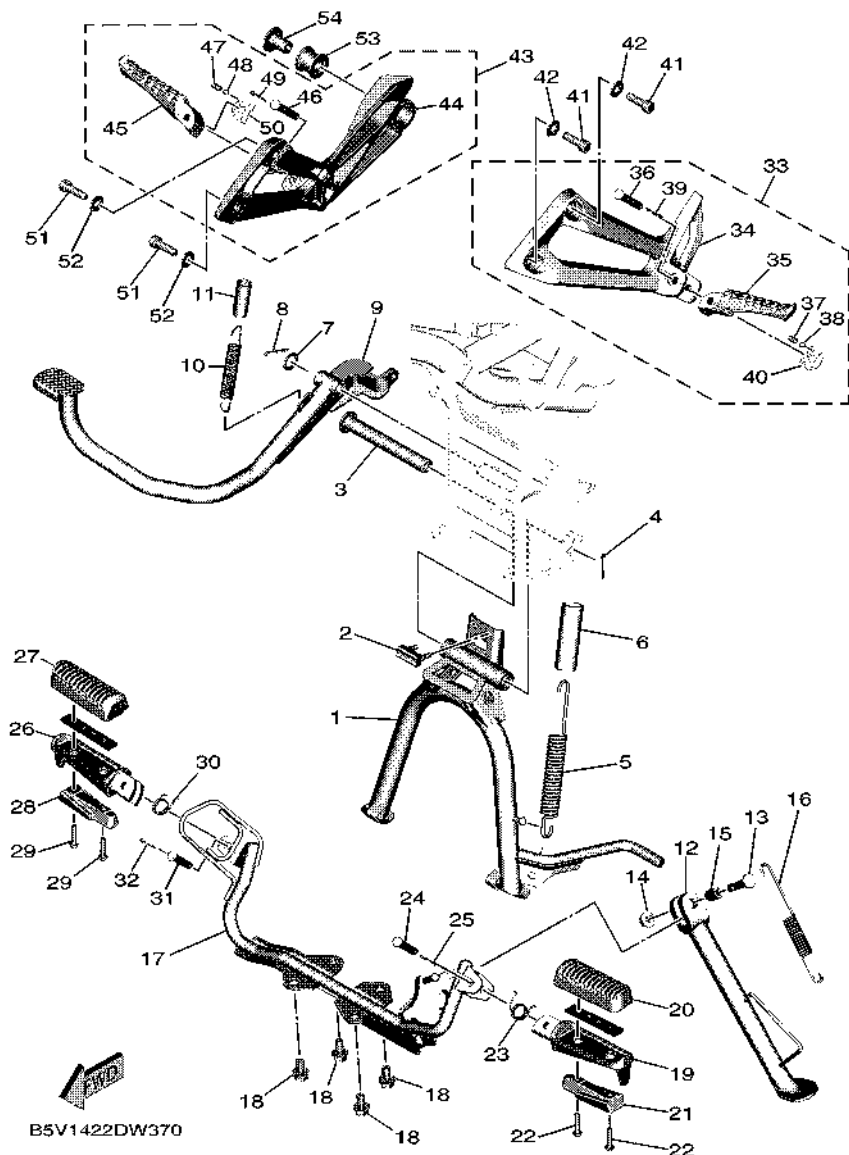
REF. NO.	PART NO.	DESCRIPTION	BSM2					REMARKS
28	BAX-F622H-00	WEIGHT	2					
29	1S8-F622F-00	DAMPER, LOCATING 1	4					
30	91317-06030	BOLT, HEXAGON SOCKET HEAD	2					
31	BAX-F6335-00	WIRE, CLUTCH	1					
32	90123-08046	BOLT	1					
33	90170-08401	NUT	1					

FIG. 30 FRONT MASTER CYLINDER



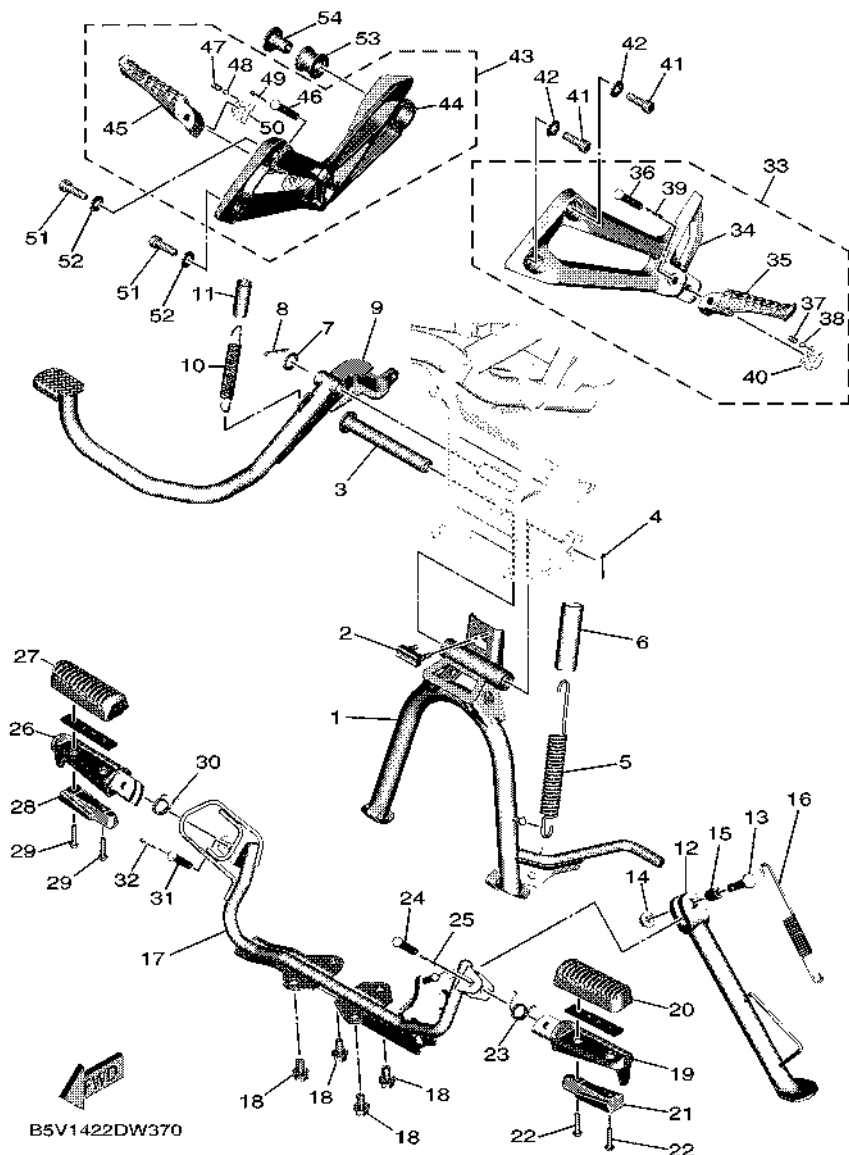
REF. NO.	PART NO.	DESCRIPTION	BSM2				REMARKS
1	BNV-F5872-00	HOSE, BRAKE 1	1				
2	95E32-06025	BOLT, FLANGE DEEP RECESS	1				
3	90401-10812	BOLT, UNION	2				
4	90201-10118	WASHER, PLATE	4				
5	BNV-F5874-00	HOSE, BRAKE 3	1				
6	90401-10812	BOLT, UNION	2				
7	90201-10118	WASHER, PLATE	4				
8	BNV-F583T-00	MASTER CYLINDER ASSY	1				
9	BNV-F5870-00	.MASTER CYLINDER SUB ASSY	1				
10	1WD-F5807-00	..CYLINDER KIT, MASTER	1				
11	2ND-F5854-00	..DIAPHRAGM, RESERVOIR	1				
12	B63-F5852-00	..CAP, RESERVOIR	1				
13	36Y-2589H-00	..SCREW	2				
14	3RW-F5889-00	..SEPARATOR	1				
15	5TL-F5867-11	..BRACKET, MASTER CYLINDER (BLACK)	1				
16	2ND-F5855-00	..BUSH, DIAPHRAGM	1				
17	BNV-H3922-00	..LEVER 2	1				
18	95602-06100	..NUT, SELF-LOCKING	1				
19	90109-06577	..BOLT	1				
20	B6H-H3980-00	..FRONT STOP SWITCH ASSY	1				
21	91317-06025	..BOLT, HEXAGON SOCKET HEAD	2				
22	97602-04312	..SCREW, PAN HEAD WITH WASHER	1				

FIG. 31 STAND & FOOTREST



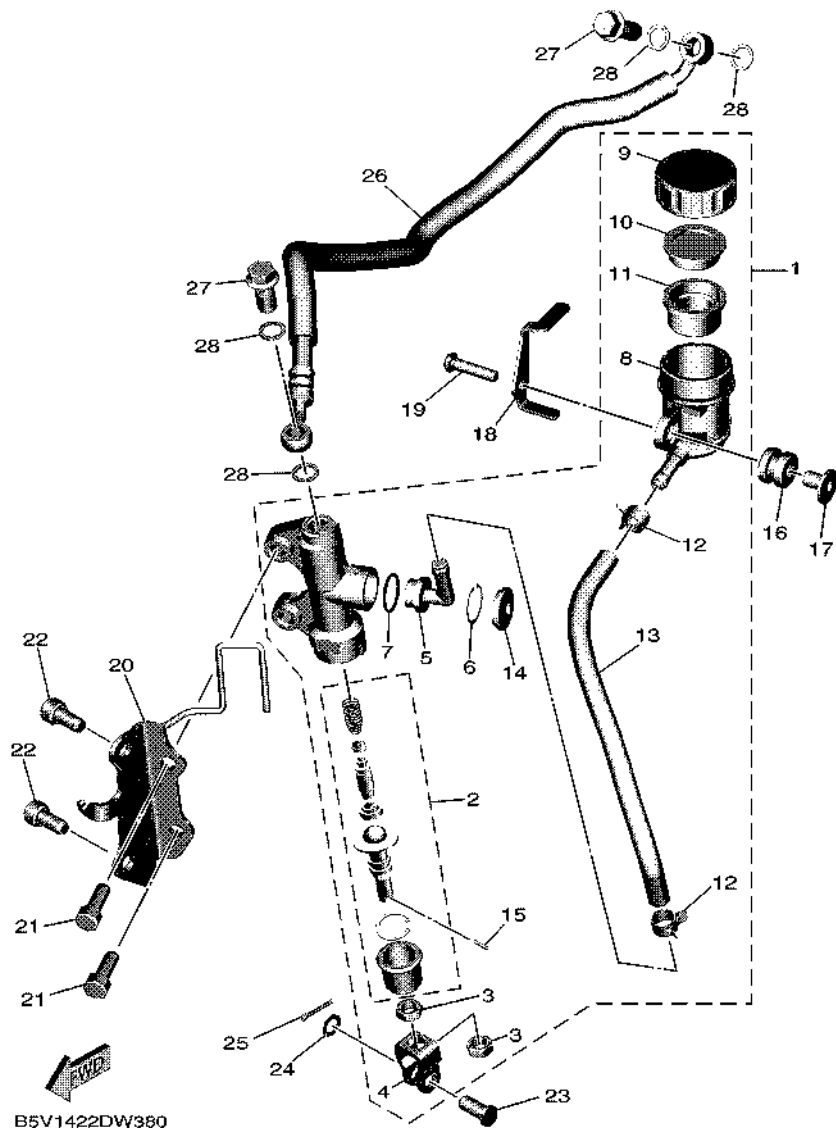
REF. NO.	PART NO.	DESCRIPTION	BSM2				REMARKS
1	B17-F7111-10	STAND, MAIN	1				
2	31D-F7114-00	STOPPER, MAIN STAND	1				
3	5YP-F7112-00	SHAFT, MAIN STAND	1				
4	91401-30030	PIN, COTTER	1				
5	90506-35806	SPRING, TENSION	1				
6	90445-22800	HOSE	1				
7	90201-14811	WASHER, PLATE	1				
8	91401-30030	PIN, COTTER	1				
9	BAX-F7211-00	PEDAL, BRAKE	1				
10	90506-20041	SPRING, TENSION	1				
11	90446-15386	HOSE	1				
12	BAX-F7311-00	STAND, SIDE	1				
13	90101-08829	BOLT	1				
14	95602-08200	NUT, U FLANGE	1				
15	90387-08820	COLLAR	1				
16	90506-26814	SPRING, TENSION	1				
17	BAX-F7411-00	FOOTREST 1	1				
18	95D32-08016	BOLT, FLANGE DEEP RECESS	4				
19	BAX-F7451-00	FOOTREST 3	1				
20	B17-F7413-00	COVER, FOOTREST	1				
21	B5V-F741E-00	ARM 2	1				
22	97602-05225	SCREW, PAN HEAD WITH WASHER	2				
23	90508-183B9	SPRING, TORSION	1				
24	91701-08035	PIN	1				
25	91401-25015	PIN, COTTER	1				
26	BAX-F7461-00	FOOTREST 4	1				
27	B17-F7413-00	COVER, FOOTREST	1				

FIG. 31 STAND & FOOTREST



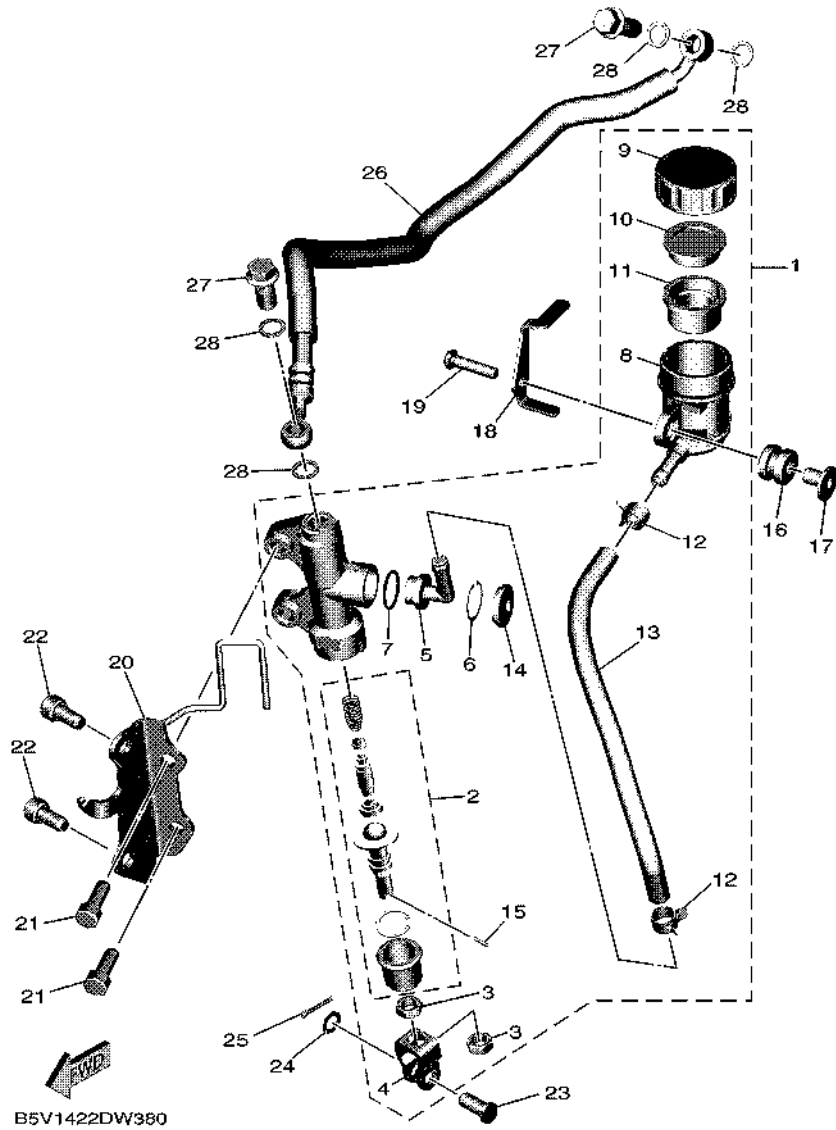
REF. NO.	PART NO.	DESCRIPTION	BSM2		REMARKS
28	B5V-F741E-00	ARM 2	1		
29	97602-05225	SCREW, PAN HEAD WITH WASHER	2		
30	90508-183B9	SPRING, TORSION	1		
31	91701-08035	PIN	1		
32	91401-25015	PIN, COTTER	1		
33	B17-F7430-00-P0	REAR FOOTREST ASSY 1	1		MBL2 FOR BNC2
34	B17-F7452-00-P0	.BRACKET, FOOTREST 1	1		MBL2 FOR BNC2
35	3C1-F7431-01	.FOOTREST, REAR 1	1		
36	91702-08042	.PIN, CLEVIS	1		
37	90501-12743	.SPRING, COMPRESSION	1		
38	93501-04823	.BALL	1		
39	91401-25015	.PIN, COTTER	1		
40	B17-F7437-00	.WASHER, SPECIAL	1		
41	91312-08025	BOLT, HEXAGON SOCKET HEAD	2		
42	90201-08043	WASHER, PLATE	2		
43	B17-F7440-00-P0	REAR FOOTREST ASSY 2	1		MBL2 FOR BNC2
44	B17-F7462-00-P0	.BRACKET, FOOTREST 2	1		MBL2 FOR BNC2
45	3C1-F7441-01	.FOOTREST, REAR 2	1		
46	91702-08042	.PIN, CLEVIS	1		
47	90501-12743	.SPRING, COMPRESSION	1		
48	93501-04823	.BALL	1		
49	91401-25015	.PIN, COTTER	1		
50	B17-F7437-00	.WASHER, SPECIAL	1		
51	91312-08025	BOLT, HEXAGON SOCKET HEAD	2		
52	90201-08043	WASHER, PLATE	2		
53	B17-E4747-00	DAMPER, MUFFLER	1		
54	90387-08812	COLLAR	1		

FIG. 32 REAR MASTER CYLINDER



REF. NO.	PART NO.	DESCRIPTION	BSM2				REMARKS
1	2ND-F580E-00	REAR MASTER CYLINDER ASSY	1				
2	2ND-F5808-00	.CYLINDER KIT, MASTER	1				
3	95301-08700	.NUT	2				
4	50C-F7222-00	.JOINT	1				
5	50C-F582A-50	.JOINT	1				
6	50C-F5866-00	.CIRCLIP	1				
7	93210-15620	.O-RING	1				
8	50C-F5894-11	.TANK, RESERVOIR	1				
9	50C-F5852-00	.CAP, RESERVOIR	1				
10	50C-F5855-00	.BUSH, DIAPHRAGM	1				
11	2VN-F5854-00	.DIAPHRAGM, RESERVOIR	1				
12	90467-12085	.CLIP	2				
13	4S3-F5895-00	.HOSE, RESERVOIR	1				
14	50C-F589A-00	.COVER, DUST	1				
15	5BU-27234-00	.PIN, BRAKE ROD	1				
16	55C-F4742-00	GROMMET	1				
17	55C-F6259-00	COLLAR	1				
18	BAX-F5888-00	COVER, RESERVOIR TANK	1				
19	98507-06025	SCREW, PAN HEAD	1				
20	BAX-F133F-00	BRACKET, MASTER CYLINDER	1				
21	91317-08020	BOLT, HEXAGON SOCKET HEAD	2				
22	91317-08016	BOLT, HEXAGON SOCKET HEAD	2				
23	90240-08005	PIN, CLEVIS	1				
24	90201-08066	WASHER, PLATE	1				
25	91401-20012	PIN, COTTER	1				
26	B5V-F5873-00	HOSE, BRAKE 2	1				
27	90401-10812	BOLT, UNION	2				

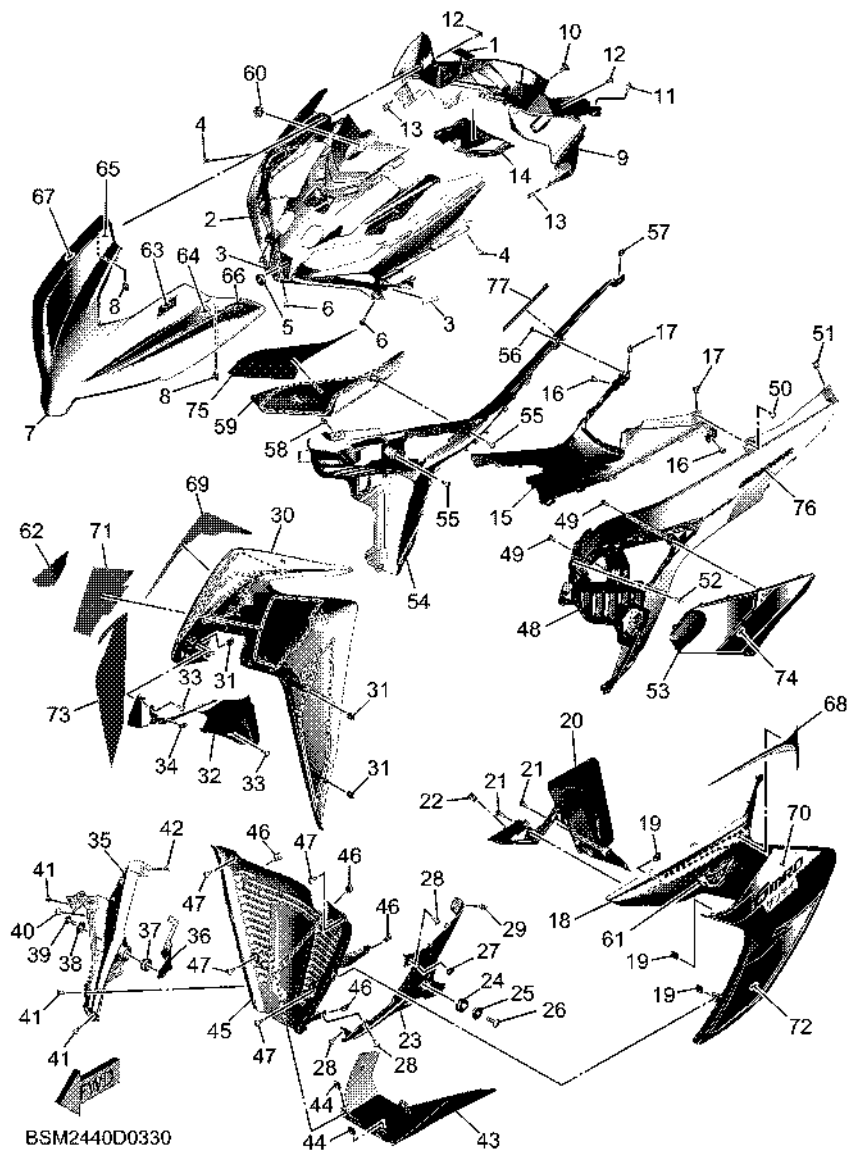
FIG. 32 REAR MASTER CYLINDER



B5V1422DW360

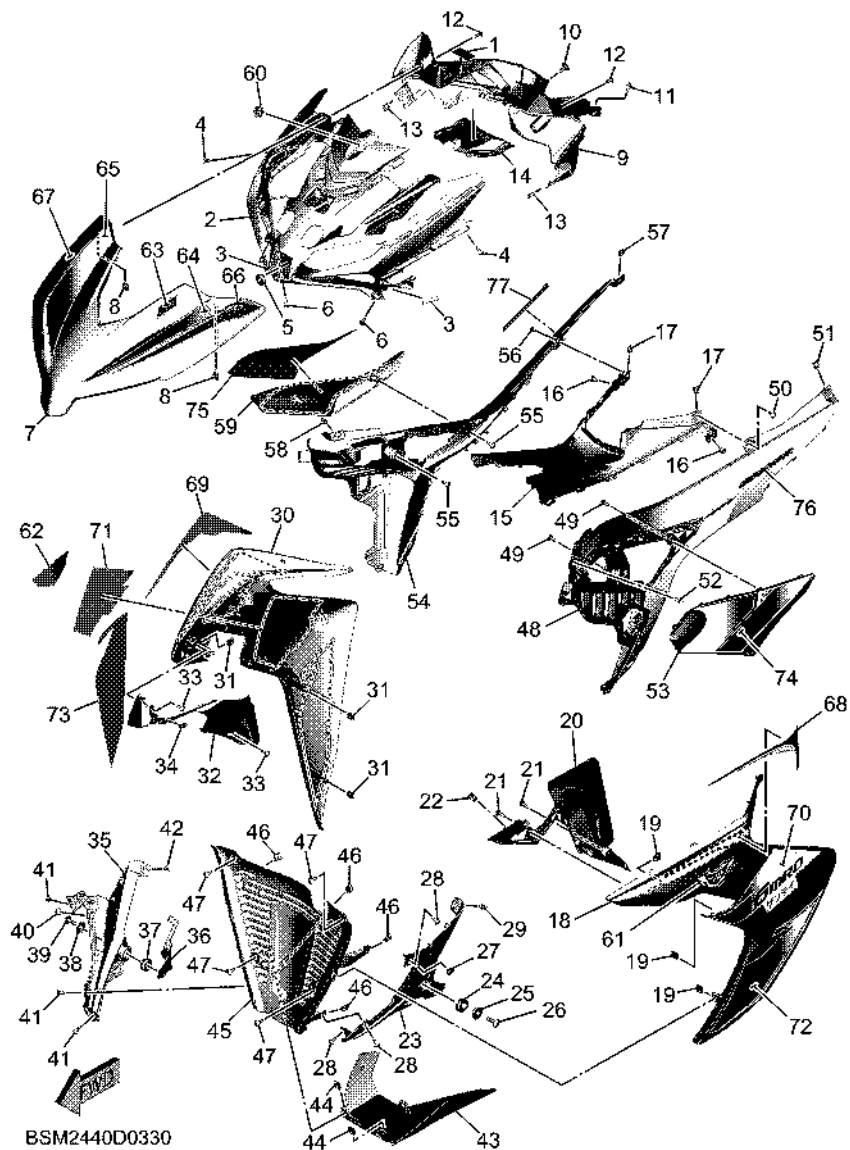
REF. NO.	PART NO.	DESCRIPTION	BSM2				REMARKS
28	90201-10118	WASHER, PLATE	4				

FIG. 33 LEG SHIELD



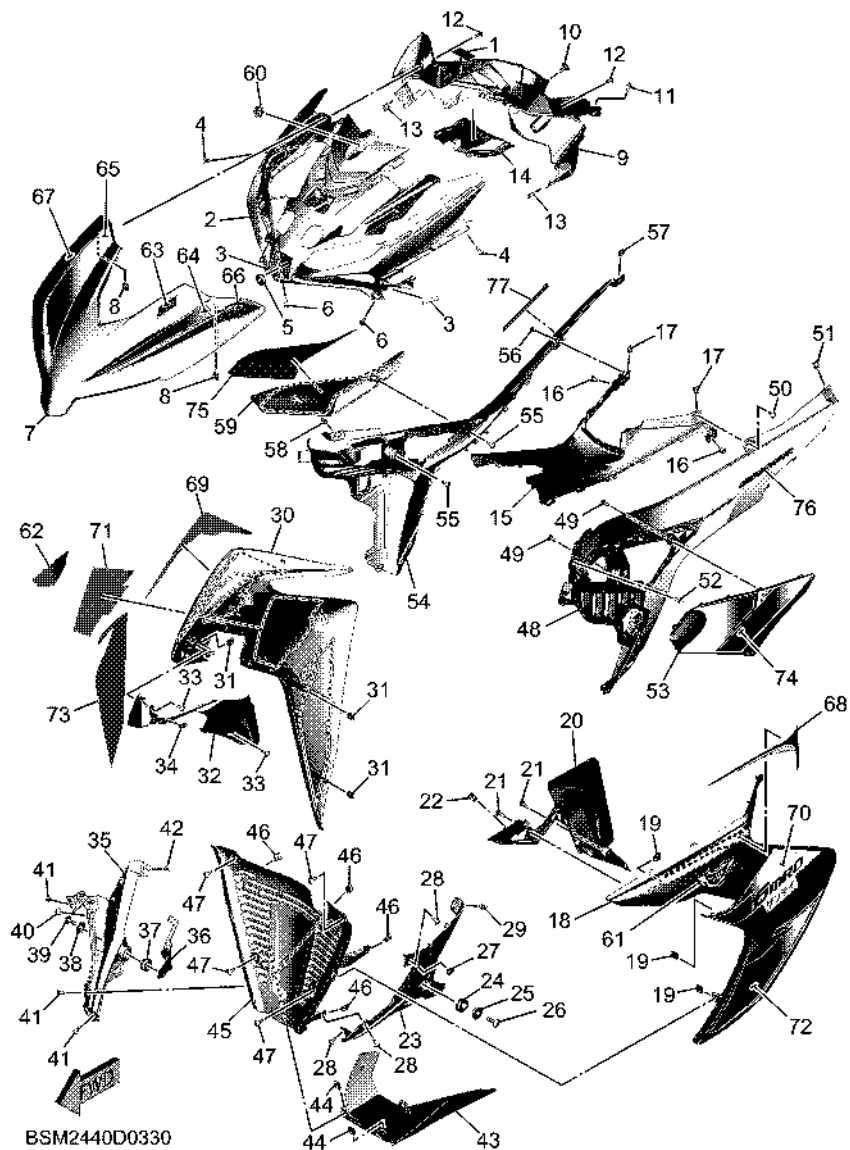
REF. NO.	PART NO.	DESCRIPTION	BSM2	REMARKS
1	B17-F1568-00	LABEL, WARNING	1	
2	BSM-F836K-00	PANEL, INNER 1	1	
3	B5V-F8344-00	TAPE	2	
4	97707-50016	SCREW, TRUSS HEAD TAPPING	2	
5	90480-13398	GROMMET	1	
6	90160-05009	SCREW, ROUND TAPPING	2	
7	BSM-F3391-00-P3	PANEL, FRONT	1	BNC2
8	90183-05807	NUT, SPRING	2	
9	BSM-F836L-00	PANEL, INNER 2	1	
10	90111-06848	BOLT, HEXAGON SOCKET BUTTON	1	
11	90269-06816	RIVET	1	
12	90160-05009	SCREW, ROUND TAPPING	2	
13	90183-05807	NUT, SPRING	2	
14	BAX-F843J-00	COVER 3	1	
15	BAX-F8365-00	COVER	1	
16	90269-06816	RIVET	2	
17	90183-05807	NUT, SPRING	2	
18	BAX-F835U-00-P9	PANEL 1	1	BNC2
19	90183-05807	NUT, SPRING	3	
20	BAX-F137U-01	GUIDE, AIR 1	1	
21	97707-50016	SCREW, TRUSS HEAD TAPPING	2	
22	90183-05807	NUT, SPRING	1	
23	BAX-F8385-00	COVER, LOWER	1	
24	90480-18418	GROMMET	1	
25	90387-09801	COLLAR	1	
26	90111-06815	BOLT, HEXAGON SOCKET BUTTON	1	
27	1S8-F6199-00	PLUG, BLIND	1	

FIG. 33 LEG SHIELD

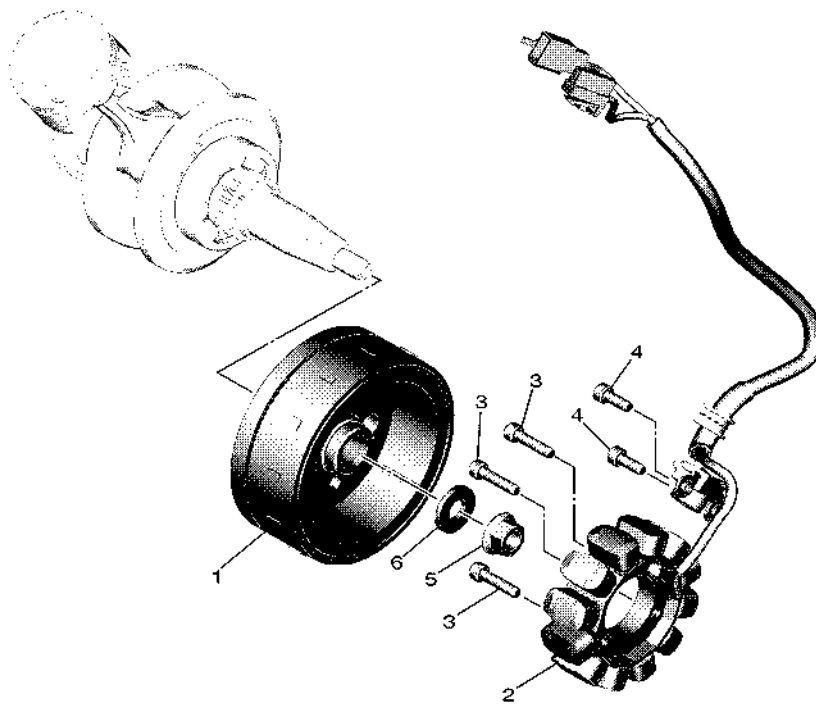


REF. NO.	PART NO.	DESCRIPTION	BSM2	REMARKS
28	97707-50012	SCREW, TRUSS HEAD TAPPING	3	
29	90269-06816	RIVET	1	
30	BAX-F835V-00-P9	PANEL 2	1	BNC2
31	90183-05807	NUT, SPRING	3	
32	BAX-F137V-01	GUIDE, AIR 2	1	
33	97707-50016	SCREW, TRUSS HEAD TAPPING	2	
34	90183-05807	NUT, SPRING	1	
35	BAX-F8395-00	COVER, UNDER 2	1	
36	BAX-F8322-00	STAY 2	1	
37	90480-18418	GROMMET	1	
38	90387-09801	COLLAR	1	
39	90111-06815	BOLT, HEXAGON SOCKET BUTTON	1	
40	1S8-F6199-00	PLUG, BLIND	1	
41	97707-50012	SCREW, TRUSS HEAD TAPPING	3	
42	90269-06816	RIVET	1	
43	BSM-F837D-00	COVER, UNDER 3	1	
44	90183-05807	NUT, SPRING	2	
45	BAX-F1552-01	FENDER, INNER	1	
46	90183-05807	NUT, SPRING	4	
47	90160-05009	SCREW, ROUND TAPPING	4	
48	BAX-F842M-00-PC	COVER 1	1	CS6 FOR BNC2
49	97707-50016	SCREW, TRUSS HEAD TAPPING	2	
50	90160-05009	SCREW, ROUND TAPPING	1	
51	90183-05807	NUT, SPRING	1	
52	90269-06816	RIVET	1	
53	BAX-F172G-00-P9	PANEL 3	1	BNC2
54	BAX-F842N-00-PC	COVER 2	1	VLGC1 FOR BNC2

FIG. 33 LEG SHIELD



REF. NO.	PART NO.	DESCRIPTION	BSM2				REMARKS
55	97707-50016	SCREW, TRUSS HEAD TAPPING	2				
56	90160-05009	SCREW, ROUND TAPPING	1				
57	90183-05807	NUT, SPRING	1				
58	90269-06816	RIVET	1				
59	BAX-F172H-00-P9	PANEL 4	1				BNC2
60	B17-F836B-30	TUNING FORK MARK	1				
61	BSM-F8328-10	EMBLEM	1				
62	BSM-F8338-10	EMBLEM	1				
63	BSM-F8368-00	EMBLEM	1				
64	BSM-F8391-30	GRAPHIC 1	1				
65	BSM-F8392-30	GRAPHIC 2	1				
66	BSM-F8393-30	GRAPHIC 3	1				
67	BSM-F8394-30	GRAPHIC 4	1				
68	BSM-F8398-30	GRAPHIC 5	1				
69	BSM-F8399-30	GRAPHIC 6	1				
70	BSM-F839A-30	GRAPHIC 7	1				
71	BSM-F839E-30	GRAPHIC 8	1				
72	BSM-F839F-30	GRAPHIC 9	1				
73	BSM-F839G-30	GRAPHIC 10	1				
74	BSM-F83GE-00	GRAPHIC, 11	1				
75	BSM-F83GF-00	GRAPHIC, 12	1				
76	BSM-F834C-20	EMBLEM, 1	1				
77	BSM-F834C-30	EMBLEM, 1	1				



B5V1422DW410

FIG. 34 GENERATOR

REF. NO.	PART NO.	DESCRIPTION	BSM2			REMARKS
1	2ND-H1450-02	ROTOR ASSY	1			
2	B5V-H1410-00	STATOR ASSY	1			
3	91332-06025	BOLT	3			
4	91332-06016	BOLT	2			
5	95702-12500	NUT, FLANGE	1			
6	90201-12019	WASHER, PLATE	1			

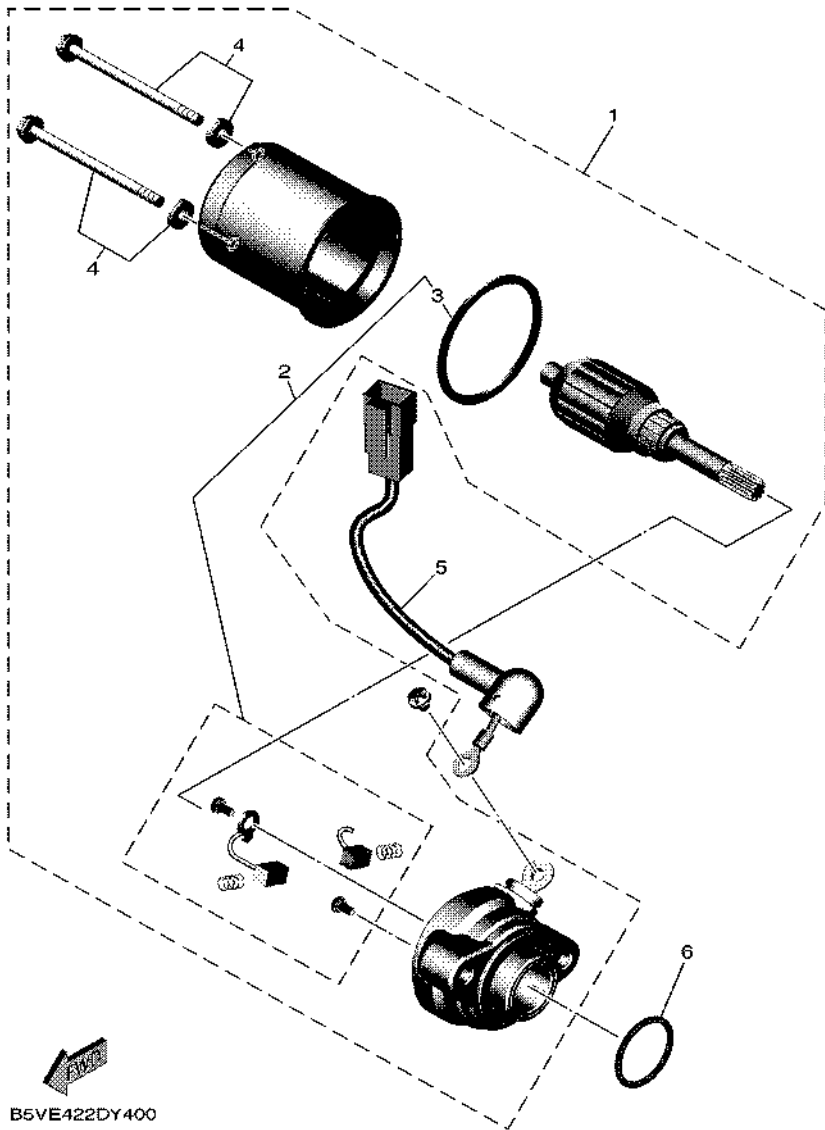
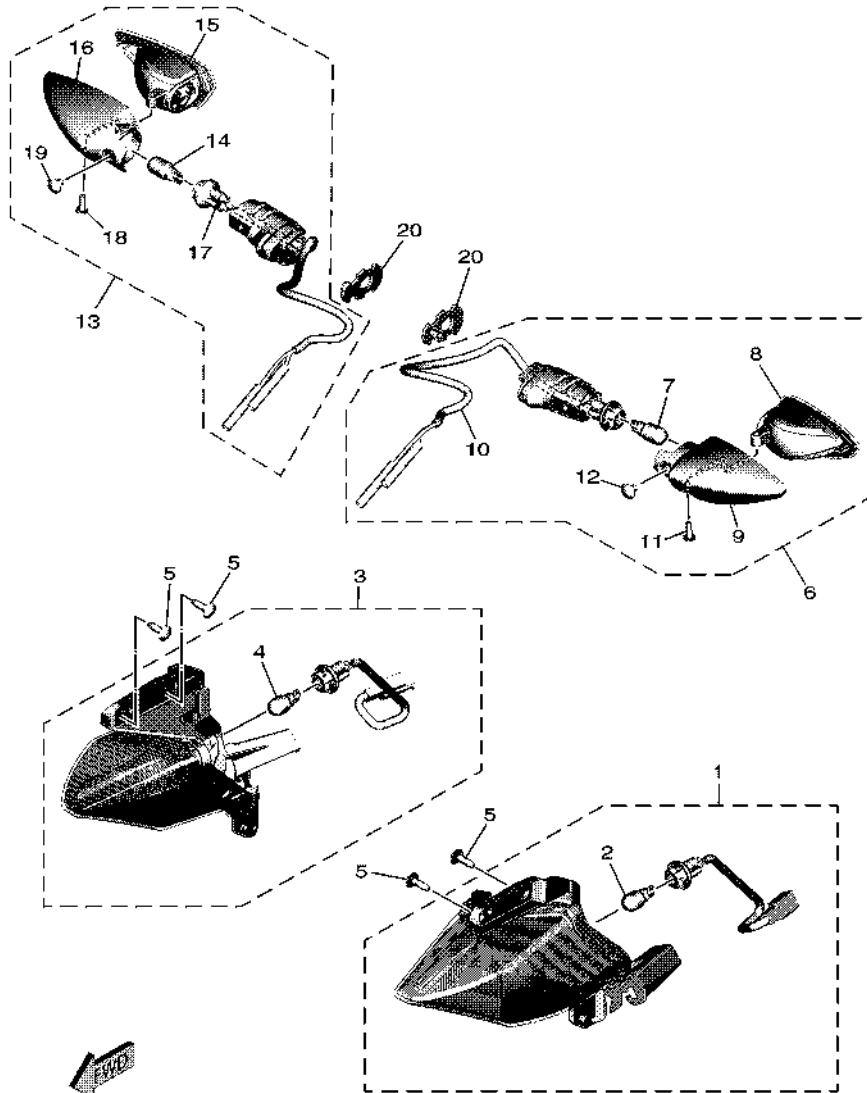


FIG. 35 STARTING MOTOR

REF. NO.	PART NO.	DESCRIPTION	BSM2					REMARKS
1	2ND-H1890-03	MOTOR ASSY	1					
2	2BM-WH18E-00	.BRUSH REPAIR KIT.	1					
3	5D9-H1861-00	..GASKET	1					
4	5D9-H1828-00	.SCREW SET	2					
5	1FC-H183G-00	CORD COMP.	1					
6	93210-26806	O-RING	1					

FIG. 36 FLASHER LIGHT

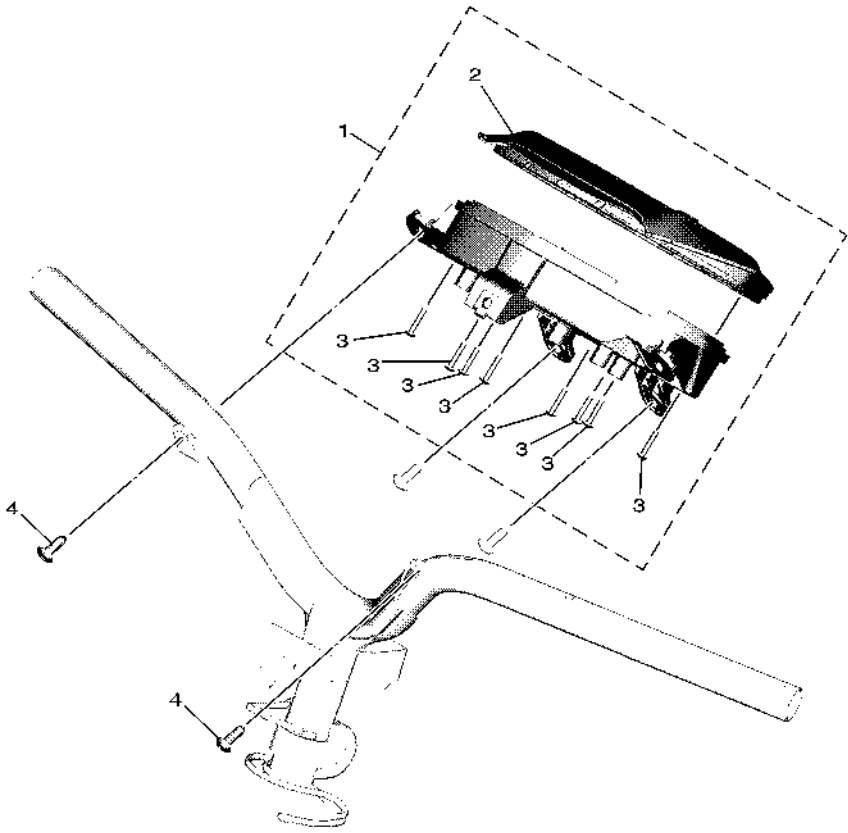


BAX1440DW360

REF. NO.	PART NO.	DESCRIPTION	BSM2				REMARKS
1	B5V-H3310-00	FRONT FLASHER LIGHT ASSY 1	1				
2	2CB-H3311-00	.BULB, FLASHER (12V-10W)	1				
3	B5V-H3320-00	FRONT FLASHER LIGHT ASSY 2	1				
4	2CB-H3311-00	.BULB, FLASHER (12V-10W)	1				
5	97707-50016	SCREW, TRUSS HEAD TAPPING	4				
6	BAX-H3330-00	REAR FLASHER LIGHT ASSY 1	1				
7	55D-H3311-00	.BULB, FLASHER (12V-10W)	1				
8	55D-H333A-00	.LENS COMP 1	1				
9	55D-H3323-00	.BODY	1				
10	BAX-H333E-00	.CORD ASSY	1				
11	55D-H3333-00	.SCREW, LENS FITTING	1				
12	55D-H3358-00	.SCREW, SPECIAL	1				
13	BAX-H3340-00	REAR FLASHER LIGHT ASSY 2	1				
14	55D-H3311-00	.BULB, FLASHER (12V-10W)	1				
15	55D-H334A-00	.LENS COMP 2	1				
16	55D-H332M-00	.BODY 2	1				
17	BAX-H334E-00	.CORD ASSY	1				
18	55D-H3333-00	.SCREW, LENS FITTING	1				
19	55D-H3358-00	.SCREW, SPECIAL	1				
20	1VP-H3318-00	STAY, FLASHER 1	2				

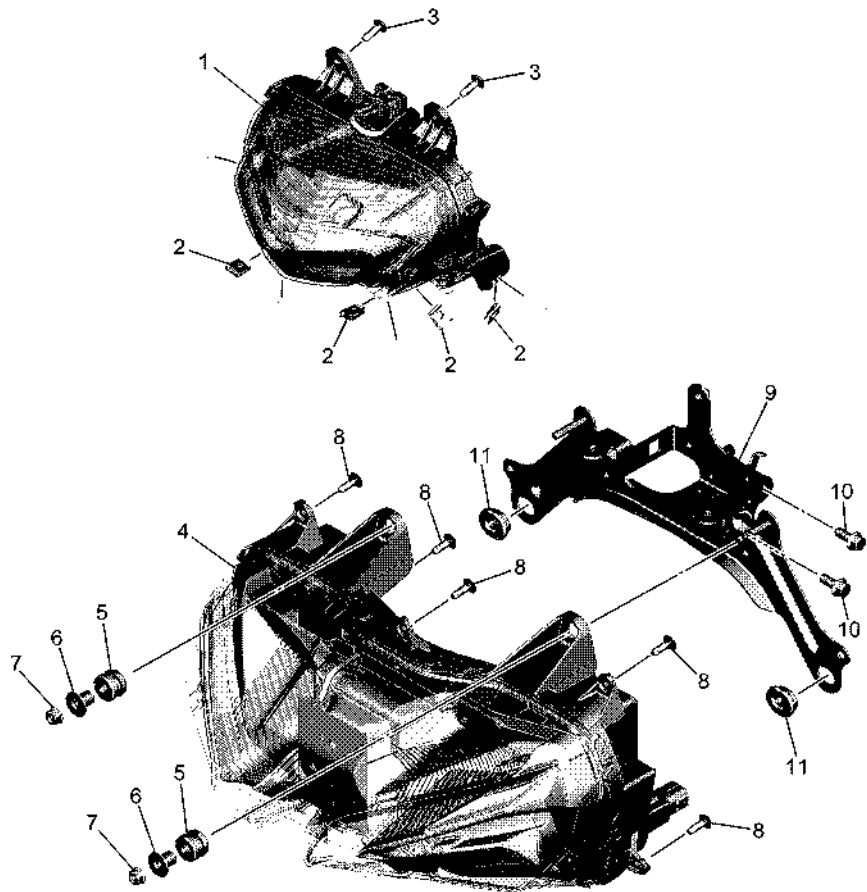
FIG. 37 METER

REF. NO.	PART NO.	DESCRIPTION	BSM2					REMARKS
1	BNV-H3500-00	METER ASSY	1					
2	BNV-H3571-00	.CASE, SPEEDOMETER UPPER	1					
3	97702-30016	.SCREW,TAPPING	8					
4	90160-05012	SCREW, ROUND TAPPING	2					



 B5V1422DW440

FIG. 38 HEADLIGHT



 BNV1422DZ380

REF. NO.	PART NO.	DESCRIPTION	BSM2				REMARKS
1	B5V-H4310-00	HEADLIGHT UNIT ASSY	1				
2	90183-05807	NUT, SPRING	4				
3	90160-05012	SCREW, ROUND TAPPING	2				
4	B5V-H431A-00	HEADLIGHT UNIT ASSY 2	1				
5	90480-14023	GROMMET	2				
6	90387-06158	COLLAR	2				
7	95702-06500	NUT, FLANGE	2				
8	90160-05012	SCREW, ROUND TAPPING	5				
9	BSM-H4118-00	STAY, HEADLIGHT 1	1				
10	95817-08030	BOLT, FLANGE	2				
11	90480-01870	GROMMET	2				

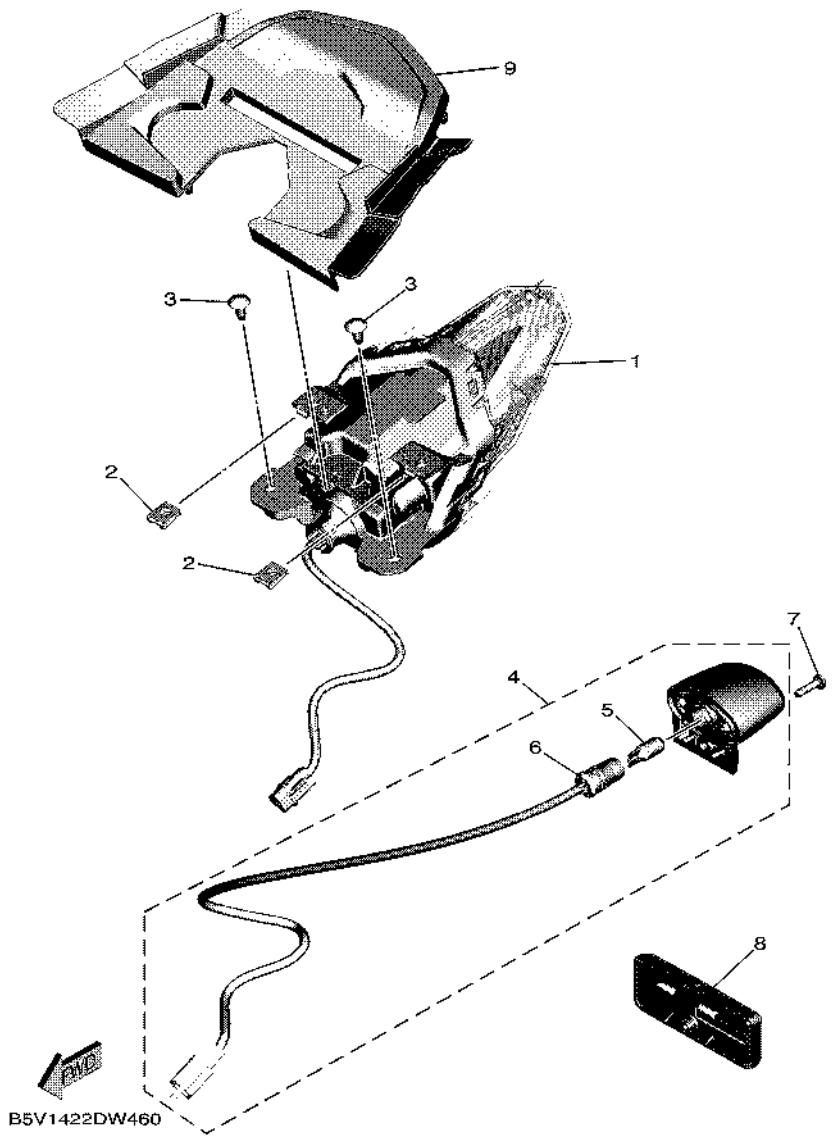
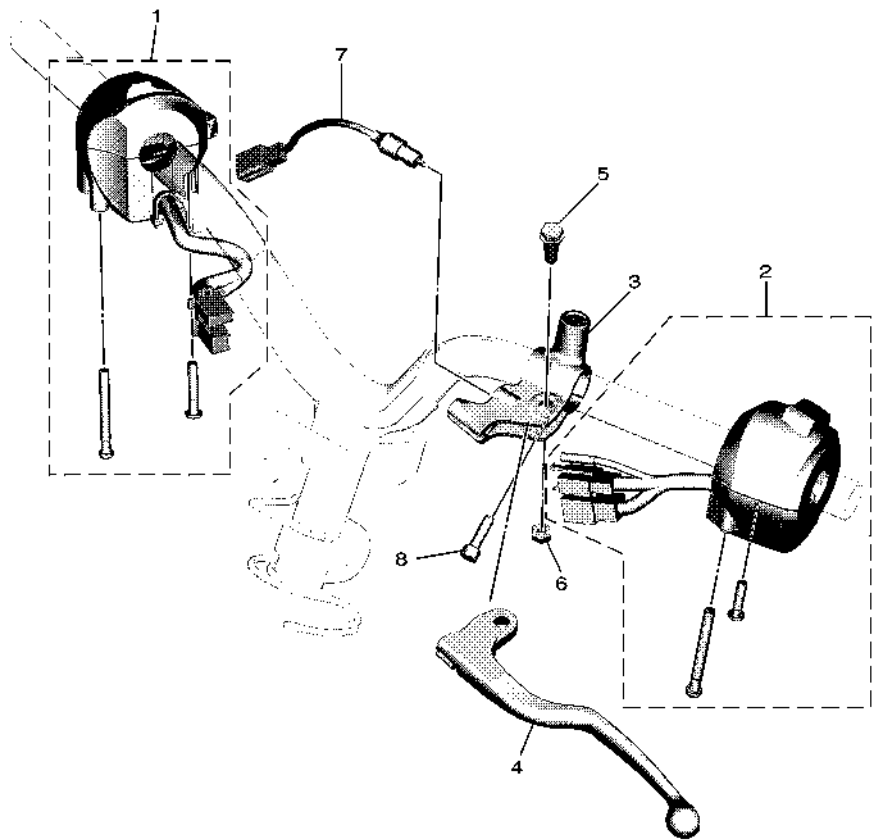


FIG. 39 TAILLIGHT

REF. NO.	PART NO.	DESCRIPTION	BSM2				REMARKS
1	B5V-H4710-00	TAILLIGHT UNIT ASSY	1				
2	90183-05807	NUT, SPRING	2				
3	97707-50012	SCREW, TRUSS HEAD TAPPING	2				
4	BAX-H4740-00	LICENSE LIGHT ASSY	1				
5	B17-H4744-00	.BULB (12V-5W)	1				
6	BXA-H4547-00	.CORD, LICENSE LIGHT	1				
7	98907-04016	SCREW, BIND	1				
8	55D-H5130-00	REAR REFLECTOR ASSY	1				
9	BAX-H4516-00	COVER, TAILLIGHT	1				

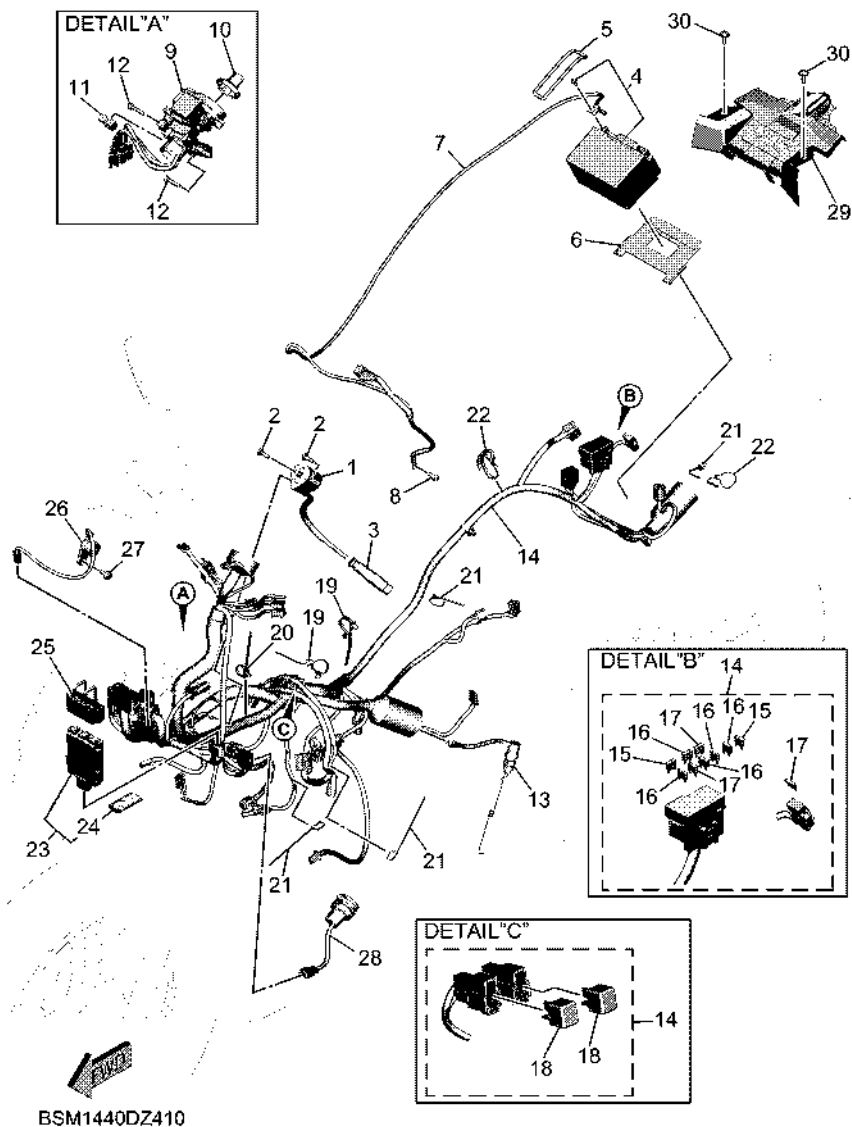
FIG. 40 HANDLE SWITCH & LEVER



REF. NO.	PART NO.	DESCRIPTION	BSM2				REMARKS
1	BAW-H3963-00	SWITCH, HANDLE 3	1				
2	B5V-H3973-00	SWITCH, HANDLE 3	1				
3	55P-H2911-00	HOLDER, LEVER 1	1				
4	B5V-H3912-00	LEVER 1	1				
5	90109-06827	BOLT	1				
6	95607-06100	NUT, SELF-LOCKING	1				
7	55P-H2917-00	SWITCH	1				
8	91337-06020	BOLT	1				

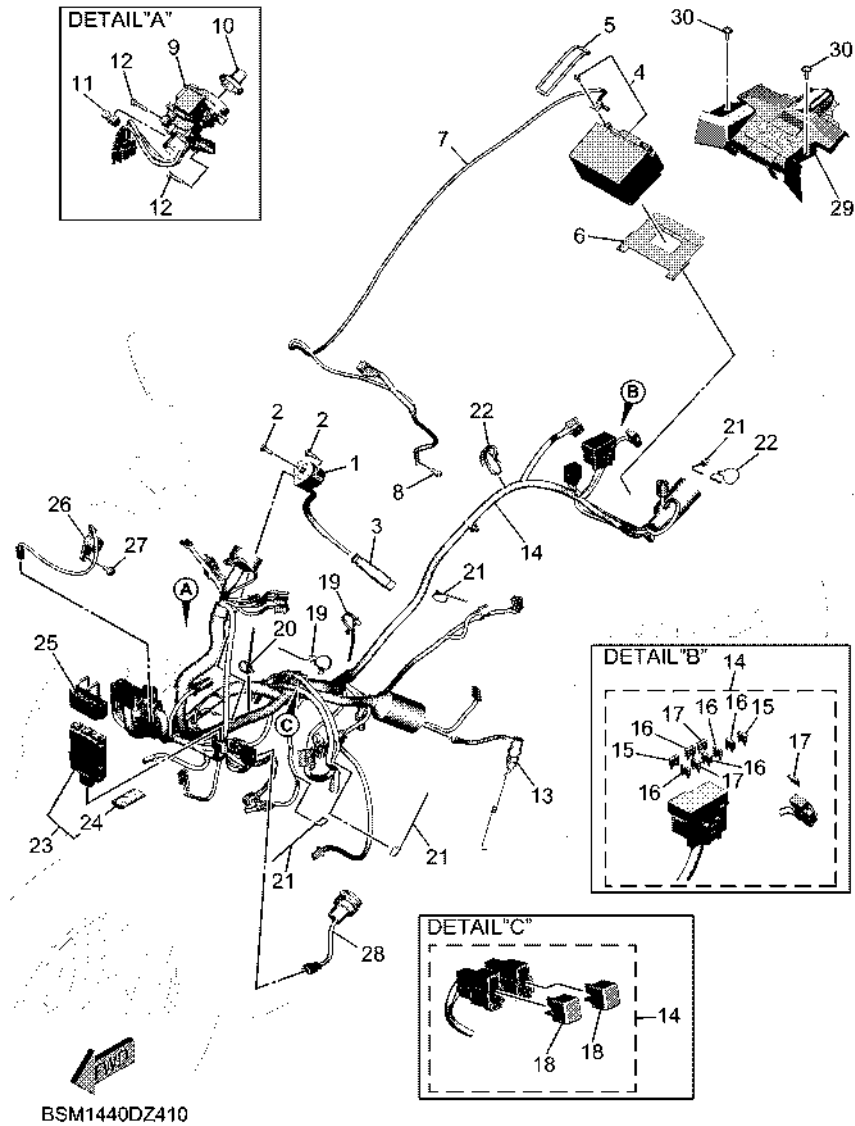

 B5V1422DW470

FIG. 41 ELECTRICAL 1



REF. NO.	PART NO.	DESCRIPTION	BSM2	REMARKS
1	B5V-H2310-00	IGNITION COIL ASSY	1	
2	97002-06016	BOLT, HEXAGON	2	
3	B0T-H2370-00	PLUG CAP ASSY	1	
4	55D-H2100-00	BATTERY ASSY (PINACO PTZ5S)	1	
5	5VW-H2131-00	BAND, BATTERY	1	
6	BAX-H2121-01	PAD, BATTERY	1	UR
	BAX-H2121-10	PAD, BATTERY	1	UR
7	BAX-H2116-00	WIRE, MINUS LEAD	1	
8	95022-06012	BOLT, FLANGE	1	
9	BAX-H2501-01	MAIN SWITCH STEERING LOCK	1	
10	B63-H276E-01	KNOB COMP.	1	
11	90464-09806	CLAMP	1	
12	90111-06162	BOLT, HEXAGON SOCKET BUTTON	2	
13	B5V-H2530-00	STOP SWITCH ASSY	1	
14	BSM-H2590-00	WIRE HARNESS ASSY	1	
15	BAX-H2151-20	.FUSE (20A)	2	
16	2BR-H2151-00	.FUSE (10A)	5	
17	BAX-H2151-90	.FUSE (5A)	3	
18	3WP-81980-00	.DIODE ASSY	2	
19	90464-34002	CLAMP	2	
20	90464-36007	CLAMP	1	
21	90464-36800	CLAMP	4	
22	90464-70800	CLAMP	2	
23	BKU-H6260-00	REMOTE CONTROL UNIT ASSY	1	
24	B2T-H6261-03	.XMTR. COMP.	1	
25	B63-H5546-00	BAND	1	
26	B8A-H3383-00	BUZZER	1	

FIG. 41 ELECTRICAL 1



REF. NO.	PART NO.	DESCRIPTION	BSM2	REMARKS
27	97702-50020	SCREW, TAPPING	1	
28	BB8-H254B-00	TERMINAL COMP.	1	
29	BAX-F255V-01	PLATE, BATTERY COVER	1	UR
	BAX-F255V-10	PLATE, BATTERY COVER	1	UR
30	90159-06810	SCREW, WITH WASHER	2	

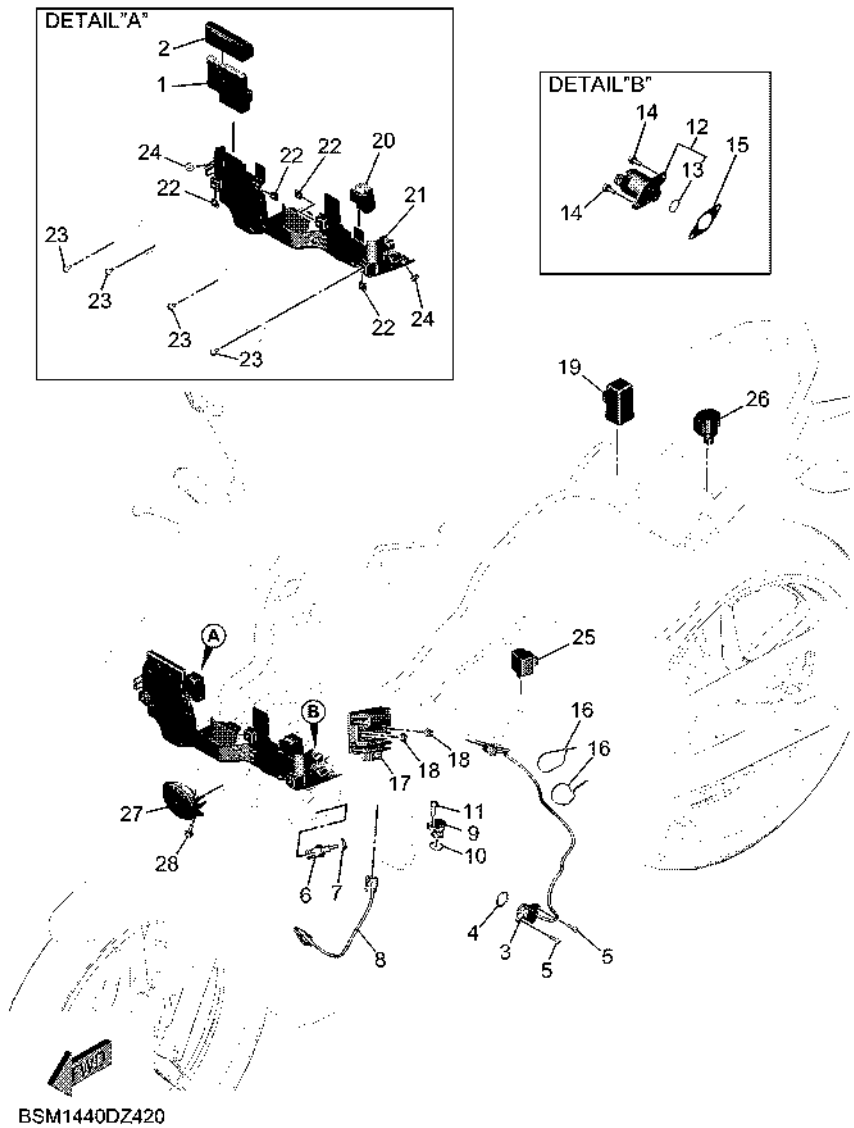
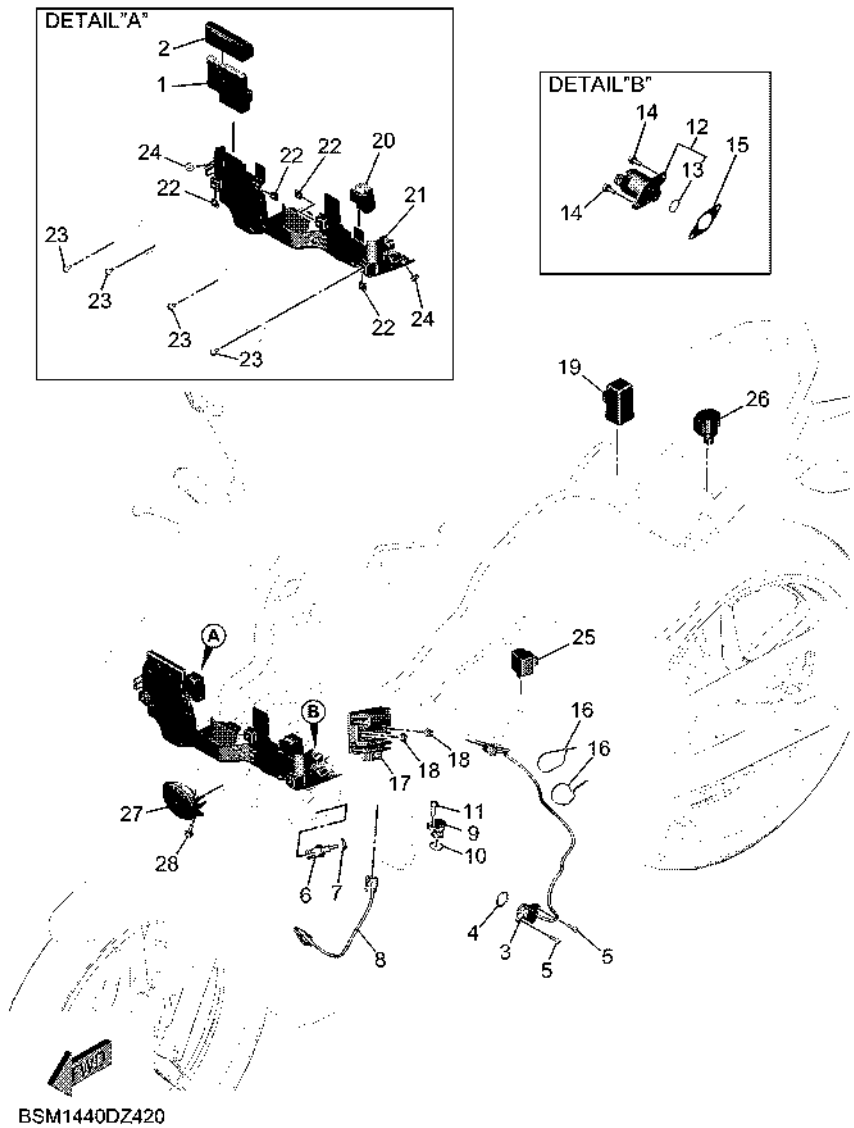


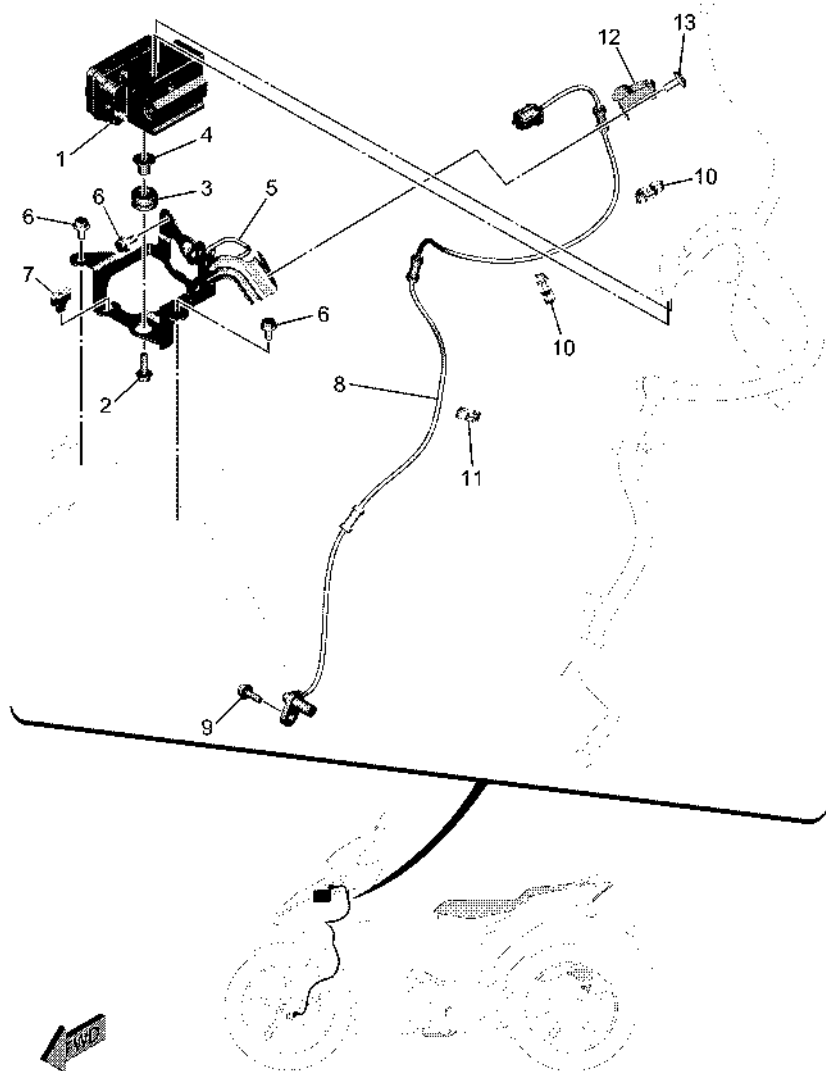
FIG. 42 ELECTRICAL 2

REF. NO.	PART NO.	DESCRIPTION	BSM2				REMARKS
1	BSM-H591A-00	ENGINE CONTROL UNIT ASSY	1				
2	B5V-H5546-00	BAND	1				
3	B5V-H2540-00	NEUTRAL SWITCH ASSY	1				
4	93210-21802	O-RING	1				
5	98502-05016	SCREW,PAN HEAD	2				
6	B7J-H3591-00	THERMO UNIT	1				
7	90430-10807	GASKET	1				
8	B5V-H592A-00	SENSOR, OXYGEN	1				
9	B9E-E5189-00	PLUG	1				
10	93210-15806	O-RING	1				
11	95812-06014	BOLT, FLANGE	1				
12	BK6-H6110-10	SOLENOID	1				
13	BK6-H1847-00	.O-RING	1				
14	95D32-06016	BOLT, FLANGE DEEP RECESS	2				
15	BAX-H1861-00	GASKET	1				
16	90464-50800	CLAMP	2				
17	2ND-H1960-11	RECTIFIER & REGULATOR ASSY	1				
18	95702-06500	NUT, FLANGE	2				
19	5TP-H1940-01	STARTER RELAY ASSY	1				
20	BK6-H1950-00	RELAY ASSY	1				
21	BSM-H2154-00	CASE	1				UR
	BSM-H2154-10	CASE	1				UR
22	90183-05807	NUT, SPRING	4				
23	97707-50012	SCREW, TRUSS HEAD TAPPING	4				
24	55C-H4759-00	GROMMET	2				
25	1PA-H2576-00	SENSOR, LEAN ANGLE	1				
26	B3F-H3350-10	FLASHER RELAY ASSY	1				

FIG. 42 ELECTRICAL 2



REF. NO.	PART NO.	DESCRIPTION	BSM2	REMARKS
27	BAX-H3371-00	HORN	1	
28	95D02-06012	BOLT, FLANGE DEEP RECESS	1	



BNV1422DZ430

FIG. 43 ELECTRICAL 3

REF. NO.	PART NO.	DESCRIPTION	BSM2				REMARKS
1	BNV-H5930-09	HYDRAULIC UNIT ASSY	1				
2	95D32-06020	BOLT, FLANGE DEEP RECESS	2				
3	90480-14229	GROMMET	2				
4	90387-068N8	COLLAR	2				
5	BNV-H5991-00	BRACKET, UNIT	1				
6	95D32-06012	BOLT, FLANGE DEEP RECESS	3				
7	BSM-F4741-00	PAD, SEAT	1				
8	BNV-H5970-00	WHEEL SENSOR ASSY, FRONT	1				
9	95D32-06016	BOLT, FLANGE DEEP RECESS	1				
10	90464-14810	CLAMP	2				
11	90464-14803	CLAMP	1				
12	BSM-F587A-00	HOLDER, BRAKE HOSE 4	1				
13	92012-06010	BOLT, BUTTON HEAD	1				

NUMERICAL INDEX

PART NO.	REF. NO.	PART NO.	REF. NO.	PART NO.	REF. NO.	PART NO.	REF. NO.	PART NO.	REF. NO.	PART NO.	REF. NO.
97707-50012	19 - 4										
	19 - 9										
	19 - 22										
	29 - 8										
	33 - 28										
	33 - 41										
	39 - 3										
	42 - 23										
97707-50016	33 - 4										
	33 - 21										
	33 - 33										
	33 - 49										
	33 - 55										
	36 - 5										
98502-05016	42 - 5										
98507-06025	32 - 19										
98512-06012	14 - 5										
98907-04016	39 - 7										
99002-10600	16 - 6										
99009-08400	5 - 6										
99009-20500	13 - 30										
99530-08012	1 - 12										
	5 - 10										